

PUBLIC LAND SURVEY MONUMENT RECORD

TYPE OF MONUMENT: BERNTSEN SNM 1 SURVEY NAIL
 ADAMS COUNTY COORDINATES, NAD 83 (2007)

N. 240384.171

E. 562283.516

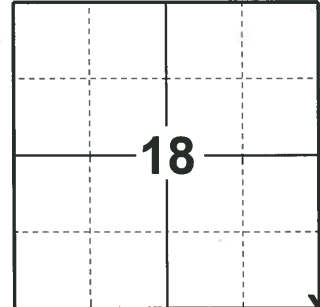
ELEVATION- - - DATUM - -

FIELD WORK DATE: 02/04/2020

BASIS FOR MONUMENT LOCATION

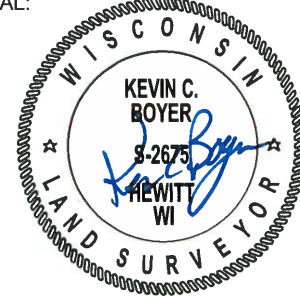
2014 - PLS 2643 STATES THE MOST RECENT TIE SHEET OF RECORD WAS FILED BY G. RHINEHART 2/24/1981. AT THAT TIME A P.K. NAIL WAS AT THE CORNER POSITION. SINCE THEN A NUMBER OF SURVEYORS HAVE VISITED THE CORNER. ACCORDING TO THE MAINTENANCE RECORD, THE CORNER WAS VISITED IN 2012 AND A MAG NAIL WAS AT THE CORNER POSITION. PRIOR TO THE HIGHWAY 21 CONSTRUCTION A MAG NAIL WAS FOUND AT THE CORNER POSITION AND VERIFIED TO A FEW OF THE TIES. AFTER THE COMPLETION OF THE HIGHWAY 21 CONSTRUCTION A BERNTSEN SNM 1 NAIL WAS SET AT THE CORNER POSITION AND 4 NEW WITNESS MONUMENTS WERE SET TO REFERENCE THE CORNER POSITION.

2020 - PLS 2675 FOUND BERNTSEN SNM 1 SURVEY NAIL IN ROAD SURFACE AND 4 TIES. REMOVED THE SURVEY NAIL AND FOUND NO OTHER EVIDENCE OF ANY ADDITIONAL MONUMENTS BELOW. THE SURVEY NAIL LOCATION AGREES WITH ALL 4 TIES. ACCEPTED THE BERNTSEN SNM 1 SURVEY NAIL NAIL AS THE CORNER LOCATION. RE-SET SURVEY NAIL IN IT'S ORIGINAL LOCATION AND MEASURED TO A FOUND PROPERTY IRON AND THE EXISTING TIES.



LOCATION
 (INDICATE CORNER BY "X")

SEAL:



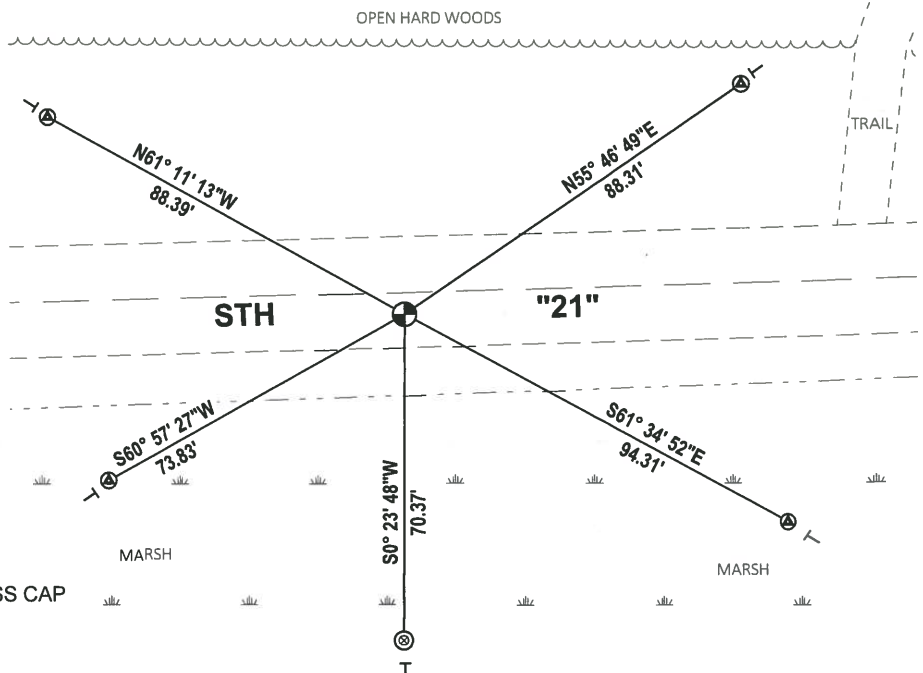
DATA SHOWN HERE ON THIS TIE SHEET IS CORRECT AND COMPLETE TO THE BEST OF MY KNOWLEDGE AND BELIEF.

PROFESSIONAL LAND SURVEYOR

DATE 3/9/2020

TIE SKETCH

NOTE: THE CORNER LANDS 4.7± NORTH OF CENTERLINE OF STH "21".



- ⊙ FOUND 1-1/2" O.D. IRON PIPE
- ⊙ FOUND BERNTSEN SDDR103 WITH BRASS CAP
- ⊙ FOUND BERNTSEN SNM 1 SURVEY NAIL
- ⊖ VINYL "T" POST

ADAMS COUNTY U.S. PUBLIC LAND SURVEY MONUMENT LOCATION RECORD

SECTION 19
TOWNSHIP 18 N
RANGE 7 E

63
NO.

LANDMARK BENCHMARK _____

FOUND
SET
RESET
RE-TIED

CORNER IDENTITY: NE CORNER SEC. 19 (BERNTSEN SNM1 NAIL)

RICHFIELD
CITY, VILLAGE, TOWN

MARATHON COUNTY COORDINATE: N: 240384.127

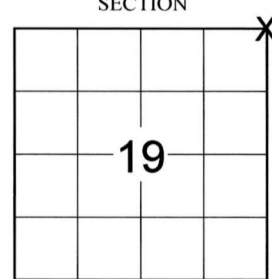
E: 562283.518

ELEVATION-(FEET): _____ DATUM: _____

WEATHER: SUNNY

DATE OF SURVEY: 7/14/2014 TEMPERATURE: 70 °F

SURVEY PARTY: KYLE R. FISCHER



LOCATION
(Indicated By X)

BASIS FOR MONUMENT LOCATION:

(DESCRIBE METHOD OF SURVEY AND CORNER AUTHENTICATION)

The most recent tie sheet of record was filed by Gregory Rhinehart on February 24, 1981. At that time a P.K. nail was at the corner position. Since then a number of surveyors have visited the corner. According to the maintenance record the corner was visited in 2012 and a mag nail was at the corner position. Prior to the Highway 21 construction a mag nail was found at the corner position and verified to a few of the ties shown on the record tie sheet. After the completion of the Highway 21 construction a Berntsen SNM 1 nail was set at the corner position and four new witness monuments were set to reference the corner position as shown below.



CERTIFIED CORRECT:

FIELD BOOK NO. S-11 PAGE NO. 69

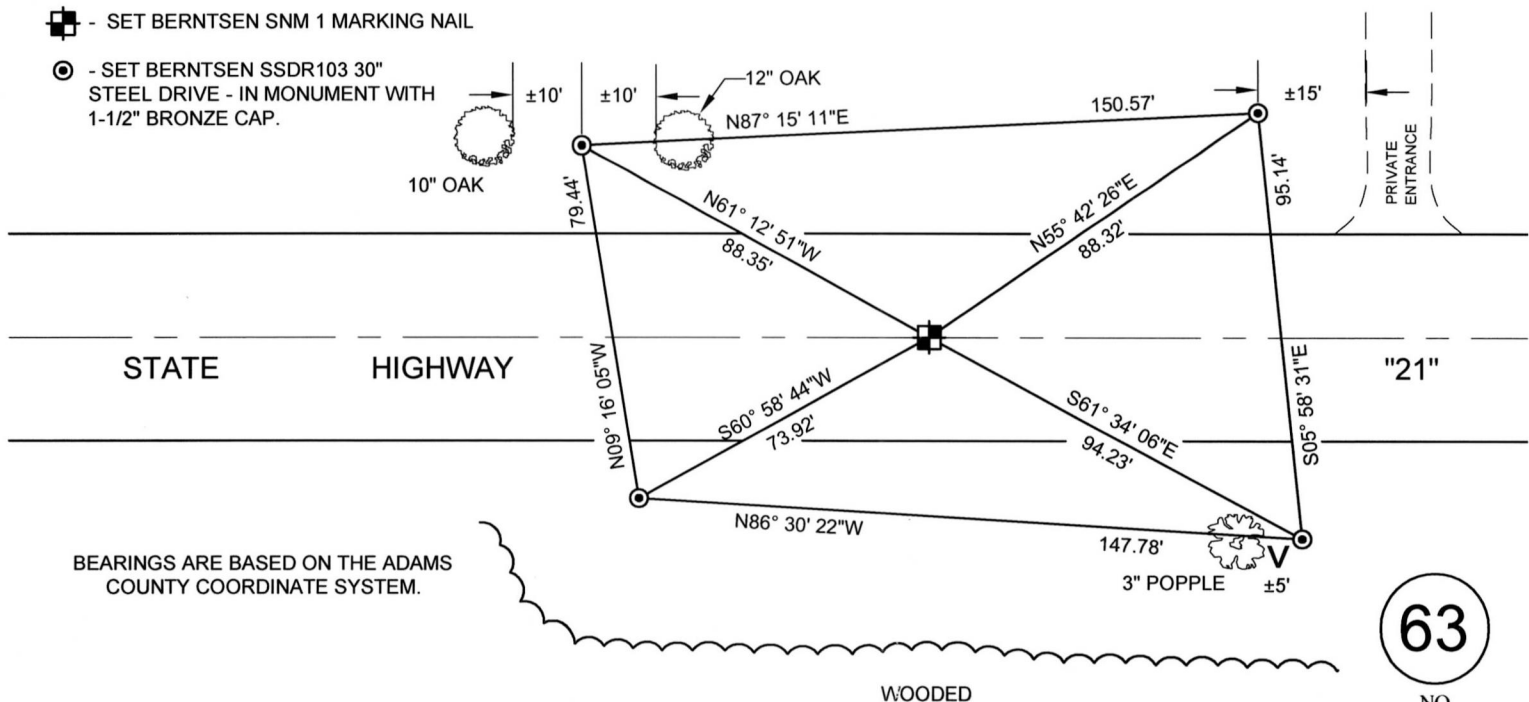
COMPANY RIVERSIDE LAND SURVEYING LLC

Kyle R. Fischer
KYLE R. FISCHER, S-2643
Registered Land Surveyor

Aug 17, 2014

TIE SKETCH:

- SET BERNTSEN SNM 1 MARKING NAIL
- SET BERNTSEN SDDR103 30" STEEL DRIVE - IN MONUMENT WITH 1-1/2" BRONZE CAP.



BEARINGS ARE BASED ON THE ADAMS COUNTY COORDINATE SYSTEM.

63
NO.