

PUBLIC LAND SURVEY MONUMENT RECORD

TYPE OF MONUMENT: HARRISON
 ADAMS COUNTY COORDINATES, NAD 83 (2007)

N. 240392.755

E. 583435.725

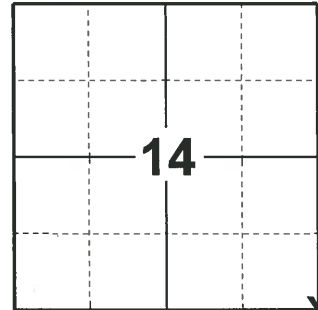
ELEVATION- _____ DATUM _____

FIELD WORK DATE: 02/04/2020

BASIS FOR MONUMENT LOCATION

1973 - PLS 878 EXCAVATED SIZABLE AREA BEFORE FINDING THE STONE. A OLD-TIMER WHO LIVES IN THE NORTHWEST CORNER OF THIS INTERSECTION CAME OUT AND SAID HE RECALLED SEEING THE STONE MANY TIMES, BUT THAT IT WAS FURTHER NORTH. A TRAVERSE OF THE SECTION INDICATES THAT THE STONE IS CORRECT IN LOCATION.

2020 - PLS 2675 FOUND HARRISON MONUMENT 18"± BELOW THE ROAD SURFACE AND 3 WITNESSES. THE MONUMENT AGREES WITH ALL WITNESSES. ACCEPTED THE HARRISON MONUMENT AS THE CORNER LOCATION. SET 4 NEW TIES AND MEASURED TO THE EXISTING WITNESSES.



LOCATION
 (INDICATE CORNER BY "X")

SEAL:



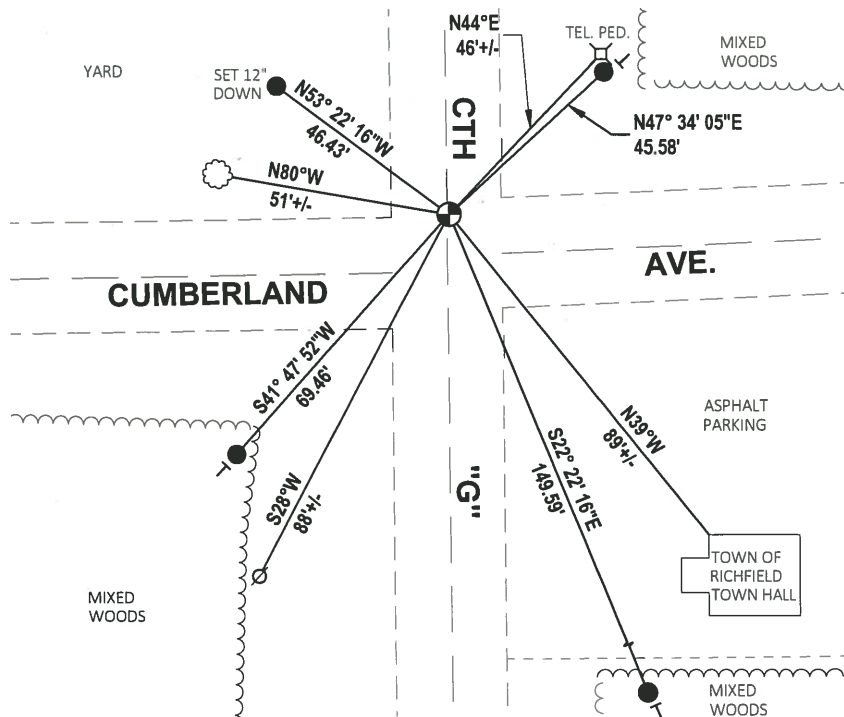
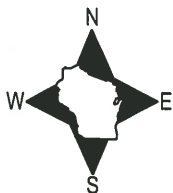
DATA SHOWN HERE ON THIS TIE SHEET IS CORRECT AND COMPLETE TO THE BEST OF MY KNOWLEDGE AND BELIEF.

PROFESSIONAL LAND SURVEYOR

DATE 3/19/2020

- TIE SKETCH

NOTE: THE CORNER LANDS 0.4'± EAST OF CTH "G" CENTERLINE AND 10'± NORTH OF CUMBERLAND AVE. CENTERLINE



- SET 3/4" x 18" IRON REBAR, 1.50#/FT
- ⊕ FOUND HARRISON MONUMENT
- ⊘ WITNESS POWER POLE
- ┊ VINYL "T" POST
- ⊙ WITNESS TREE

ADAMS COUNTY

Survey Monument Record

TYPE OF MONUMENT: Harrison std.

STATE PLANE COORDINATES: N _____

E _____

ELEVATION — M.S.L. DATUM: _____

THETA ANGLE: _____

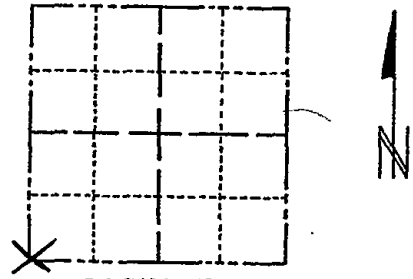
FIELD BOOK: 108 PAGE 10

CORNER NO. 264

SECTION 13

TOWN 18

RANGE 7



LOCATION
(Indicated by 'X')

SEAL:

BASIS FOR MONUMENT LOCATION

(Use reverse side if necessary)

Show info such as: History of corner, with reference to Vol. and pg, dates, surveyor; exact description of monument replaced; if location computed, by taped or EDM traverse; landowner remarks, etc.

As the attached pictures show, we excavated sizable area before finding the stone. We were ready to give up when the oldtimer who lives in the northwest corner of this intersection came out and said he recalled seeing the stone many times, but that it was further north. A traverse of the section indicates that the stone is correct in location.



CORNER O.K. 3-14-77 GR-SS
" " 5-17-82 PK-SS
" " 2-23-87 SS
" " 11-26-91 KZ-SS

COR OK 2-18-97 - JG-SS
2-NEW TIES 1-14-02 SG
OK 4-11-07 - JG
OK 02-27-12 MS-SS

CERTIFIED CORRECT:

Registered Land Surveyor

DATE: April, 73

TIE SKETCH

(Show at least four ties)

Ties are to nail and disc, 18 CEDAR (NOT BLAZED)

