

PUBLIC LAND SURVEY MONUMENT RECORD

TYPE OF MONUMENT: HARRISON
 ADAMS COUNTY COORDINATES, NAD 83 (2007)

N. 240449.413

E. 586081.615

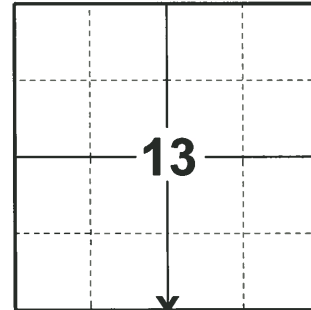
ELEVATION- - - - - DATUM - - - - -

FIELD WORK DATE: 01/23/2020

BASIS FOR MONUMENT LOCATION

1973 - PLS 878 SET HARRISON MONUMENT HALF WAY BETWEEN SECTION CORNERS, BUT NOT ON A STRAIGHT LINE, SINCE THIS FELL TOO FAR NORTH OF ROAD. DUG IN AREA WITH BACKHOE BUT FOUND NOTHING.

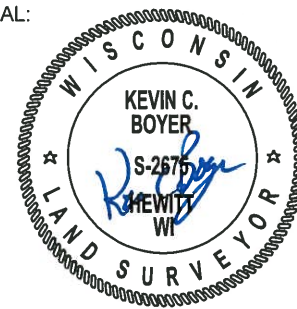
2020 - PLS 2675 FOUND HARRISON MONUMENT 8"± BELOW THE ROAD SURFACE AND DID NOT RECOVER ANY EXISTING TIES OR WITNESSES. THE MONUMENT IS EQUIDISTANT BETWEEN THE SW AND SE CORNERS. ACCEPTED THE HARRISON MONUMENT AS THE BEST EVIDENCE OF THE CORNER LOCATION. SET 3 NEW TIES AND MEASURED TO A FOUND PROPERTY IRON.



LOCATION

(INDICATE CORNER BY "X")

SEAL:



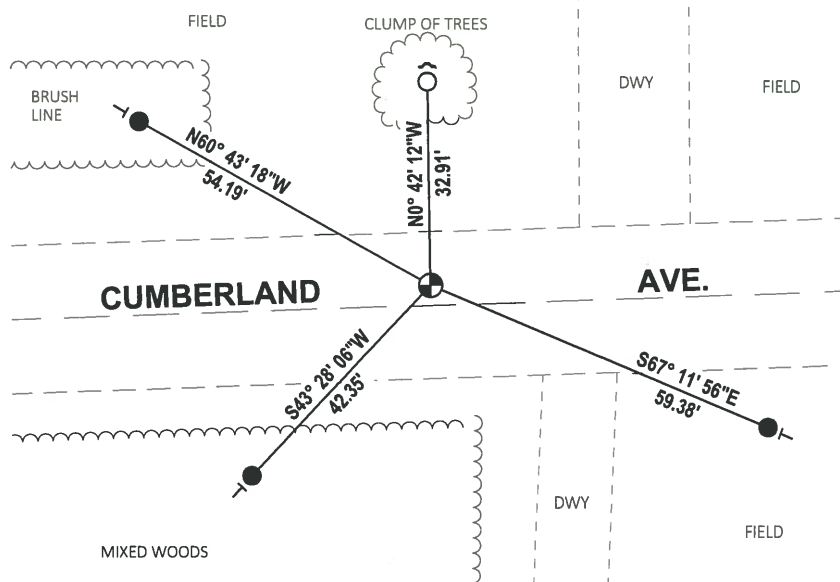
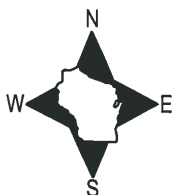
DATA SHOWN HERE ON THIS TIE SHEET IS CORRECT AND COMPLETE TO THE BEST OF MY KNOWLEDGE AND BELIEF.

PROFESSIONAL LAND SURVEYOR

DATE 3/9/2020

- TIE SKETCH

NOTE: THE CORNER LANDS 3.3'± NORTH OF CENTERLINE OF CUMBERLAND AVE.



- SET 3/4" x 18" IRON REBAR, 1.50#/FT
- FOUND 3/4" IRON ROD
- ⊕ FOUND HARRISON MONUMENT
- ~ STEEL FENCE POST
- └ VINYL "T" POST

ADAMS COUNTY

CORNER NO. 265

Survey Monument Record

SECTION 13

TYPE OF MONUMENT: Harrison std.

TOWN 18

STATE PLANE COORDINATES: N _____

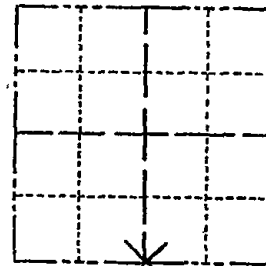
RANGE 7

E _____

ELEVATION — M.S.L. DATUM: _____

THETA ANGLE: _____

FIELD BOOK: 108 PAGE 10



LOCATION
(Indicated by 'X')

SEAL:



BASIS FOR MONUMENT LOCATION

(Use reverse side if necessary)

Show info such as: History of corner, with reference to Vol. and pg, dates, surveyor; exact description of monument replaced; if location computed, by taped or EDM traverse; landowner remarks, etc.

Set half way between section corners, but not on a straight line, since this fell too far north of road.
Dug in area with backhoe but found nothing.

CORNER	O.K.	3-14-77	GR-SS
"	"	5-17-82	PK-SS
"	"	3-9-87	GR-SS
"	"	12-4-91	KZ-SG
"	"	3 NEW TIES	12-18-97 JG-SS
OK		1-14-02	JG

CERTIFIED CORRECT:

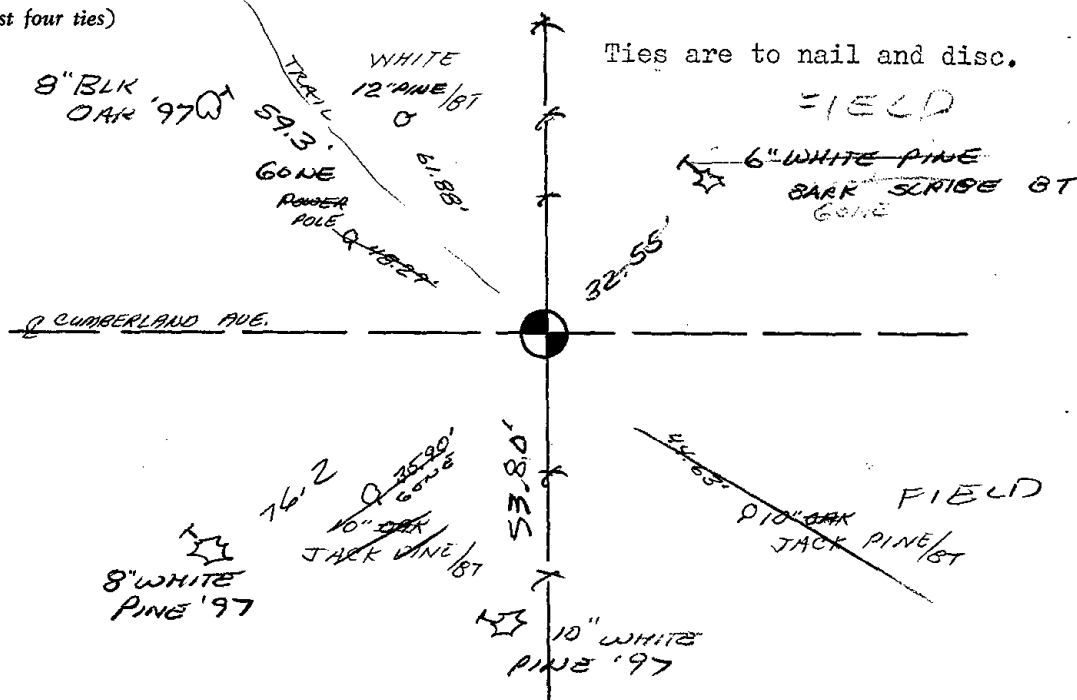
Anthony B. Kiedrowski
Registered Land Surveyor

DATE: 4/11/73

TIE SKETCH

1-NEW TIE, 4-11-07-JG.
OK 02-28-12 MS

(Show at least four ties)



Ties are to nail and disc.

FIELD

6" WHITE PINE
BARK SCRIBE BT
GONE

FIELD

9 1/2" OAK
JACK PINE 1/8T