

PUBLIC LAND SURVEY MONUMENT RECORD

TYPE OF MONUMENT: HARRISON
 ADAMS COUNTY COORDINATES, NAD 83 (2007)

N. 237721.847

E. 562263.061

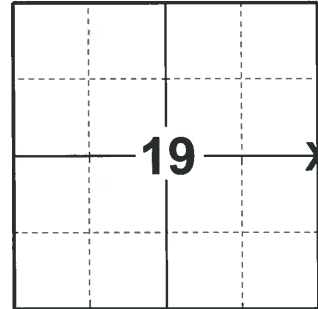
ELEVATION- _____ DATUM _____

FIELD WORK DATE: 01/13/2020

BASIS FOR MONUMENT LOCATION

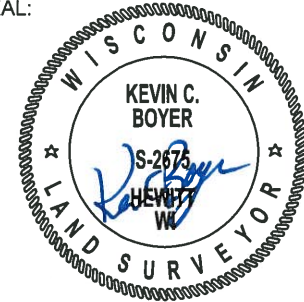
1981 - PLS 1478 SEARCH AREA FOR THIS CORNER WAS DETERMINED BY MEASURING RECORD DISTANCE NORTH FROM THE CREEK NOTED IN THE ORIGINAL NOTES AS 30.50 CHAINS NORTH OF THE SW CORNER OF SECTION 20. AT THIS LOCATION BITS OF FENCE WIRE FOUND RUNNING IN A SOUTHERLY DIRECTION FROM THE NORTHEAST CORNER OF A GROWN OVER FIELD AND IN A CLUMP OF BLACK OAK TREES THAT FIT THE ORIGINAL BEARING AND DISTANCE (5" BLACK OAK, S89°E 14 LINKS, 9.24'). THESE TREES APPEAR TO HAVE SUCKERED FROM THE ORIGINAL BEARING TREE THAT WAS DESTROYED BY FIRE AS WITNESSED BY LARGER FIRE SCARRED TREES IN THE IMMEDIATE VICINITY. THE CORNER WAS LOCATED AT RECORD BEARING AND DISTANCE FROM THIS CLUMP OF BLACK OAK TREES. EDM/TRANSIT TRAVERSE OF SECTIONS 19 AND 20 VERIFIES THIS LOCATION.

2020 - PLS 2675 FOUND HARRISON MONUMENT FLUSH WITH THE GROUND AND 4 WITNESS TREES. THE MONUMENT AGREES WITH ALL WITNESS TREES. ACCEPTED THE HARRISON MONUMENT AS THE CORNER LOCATION. SET 4 NEW TIES AND MEASURED TO THE EXISTING WITNESS TREES.



LOCATION
 (INDICATE CORNER BY "X")

SEAL:



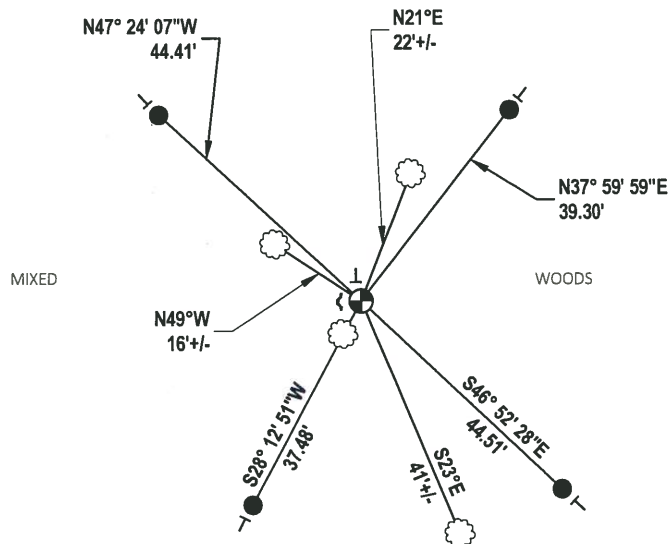
DATA SHOWN HERE ON THIS TIE SHEET IS CORRECT AND COMPLETE TO THE BEST OF MY KNOWLEDGE AND BELIEF.

PROFESSIONAL LAND SURVEYOR

DATE 3/9/2020

- TIE SKETCH

NOTE: THE WITNESS TREE TO THE SW IS S29°W, 6'± FROM THE HARRISON MONUMENT.

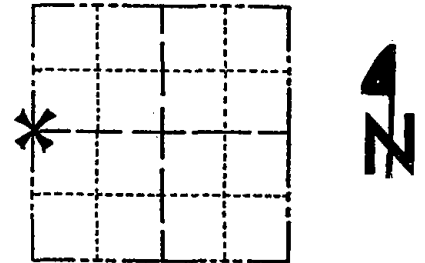


- SET 3/4" x 18" IRON REBAR, 1.50#/FT
- ⊕ FOUND HARRISON MONUMENT
- ┌ STEEL FENCE POST
- └ VINYL "T" POST
- ☁ WITNESS TREE

Government Land Corner Certificate

ADAMS County
 TYPE OF MONUMENT: HARRISON STANDARD
 STATE PLANE COORDINATES: N _____
 E _____
 ELEVATION — M.S.L. DATUM: _____
 THETA ANGLE: _____
 FIELD BOOK: A-F 3 PAGE 52
 DRAWN BY: S. SORENSEN

CORNER NO. 75
 SECTION 20
 TOWN 18
 RANGE 7



LOCATION
(Indicated by 'X')

SEAL:



DATA SHOWN HERE ON
CERTIFIED CORRECT:

Gregory P. Rhinehart
Registered Land Surveyor

DATE: 2-24-81

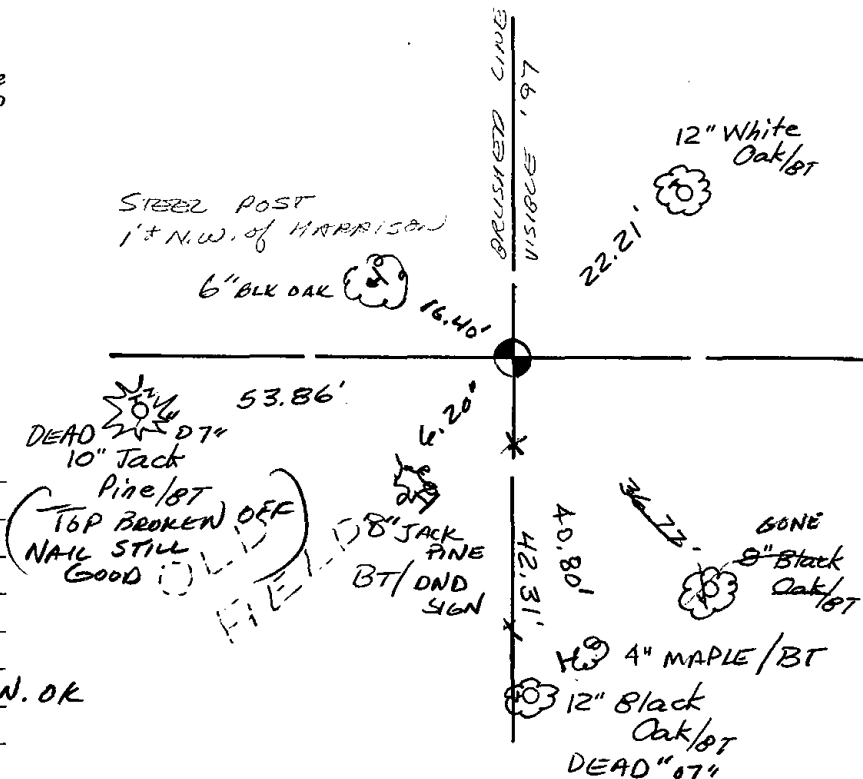
BASIS FOR MONUMENT LOCATION

Show info such as: History of corner, with reference to Vol. and pg., dates, surveyor; exact description of monument replaced; if location computed, by taped or EDM traverse; landowner remarks, etc. (Use reverse side if necessary)

A search area for this corner was determined by measuring record distance North from the creek noted in the original notes as 30.50 chains north of the SW corner of section 20. At this location bits of fence wire found running in a southerly direction from the northeast corner of a grown over field and in a clump of black oak trees that fit the original bearing and distance (5" black oak, S89°E 14 links, 9.24') These trees appear to have suckered from the original bearing tree that was destroyed by fire as witnessed by larger fire scarred trees in the immediate vicinity. The corner was located at record bearing and distance from this clump of black oak trees. EDM-Transit traverse of Sections 19 and 20 verifies this location.

TIE SKETCH

Show at least four ties, also fence lines, roads, topo, size and type of witness trees' and if off road - best way to arrive at corner.



MAINTENANCE RECORD

Date	Init.	Remarks
5-17-82	PK-SS	O.K.
2-18-87	SS	OK
4-21-97	JG-SS	"
1-08-02	JG	1-GONE, 1-NEW
10-3-07	JG	2-DEAD 2-NEW, MON. OK
02-29-12	SS	OK

