

22  
SECTION

18  
TOWN

07  
RANGE

# ADAMS COUNTY

COUNTY CORNER NO: 78  
ROMPORTOL ID: 41807222000

## PUBLIC LAND SURVEY MONUMENT RECORD

TYPE OF MONUMENT: HARRISON  
ADAMS COUNTY COORDINATES, NAD 83 (2007)

N. 237743.165

E. 578143.894

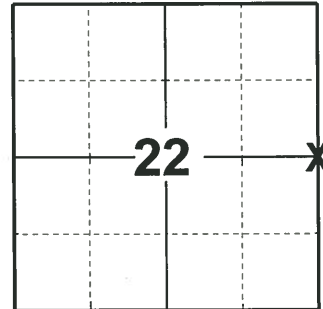
ELEVATION- - - - DATUM - - - -

FIELD WORK DATE: 01/15/2020

### BASIS FOR MONUMENT LOCATION

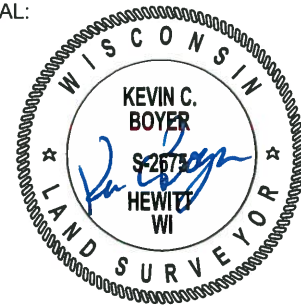
1981 - PLS 878 NO EVIDENCE OF M.C. SMITH POST COULD BE FOUND ALTHOUGH EXCAVATED A 10'X8' AREA WITH BACKHOE. CORNER IS RESET AS SMITH DID, ON LINE AND EQUIDISTANT BETWEEN SECTION CORNERS, IN THIS CASE, BOTH SECTION CORNER STONES WERE FOUND. (SEE VOL. 1, PG. 48 ADAMS COUNTY SURVEY RECORDS.)

2020 - PLS 2675 FOUND HARRISON MONUMENT 6"± BELOW THE ROAD SHOULDER, 2 TIES, AND 1 WITNESS. THE MONUMENT AGREES WITH THE TIES AND WITNESS. ACCEPTED THE HARRISON MONUMENT AS THE CORNER LOCATION. SET 4 NEW TIES AND MEASURED TO EXISTING THE TIES AND WITNESS.



LOCATION  
(INDICATE CORNER BY "X")

SEAL:



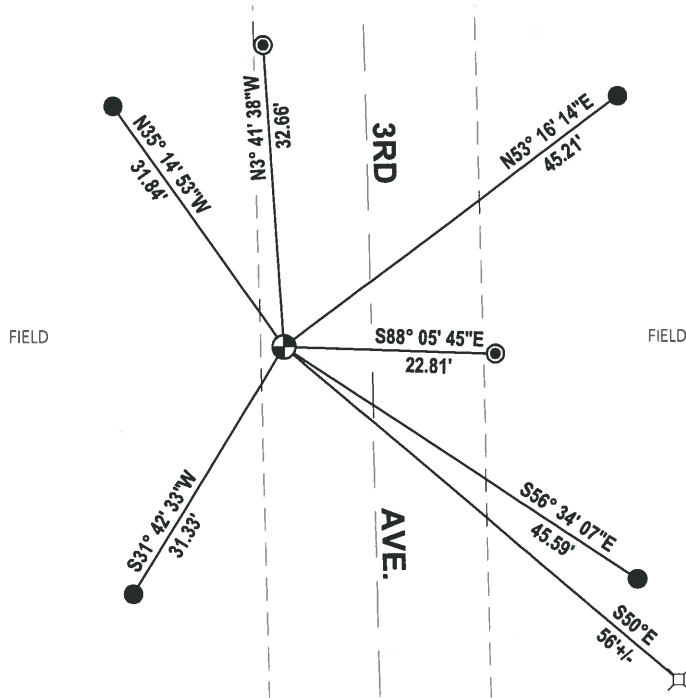
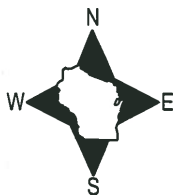
DATA SHOWN HERE ON THIS TIE SHEET IS CORRECT AND COMPLETE TO THE BEST OF MY KNOWLEDGE AND BELIEF.

PROFESSIONAL LAND SURVEYOR

DATE 3/9/2020

### TIE SKETCH

NOTE: THE CORNER LANDS 9.5'± WEST OF 3RD AVE. CENTERLINE

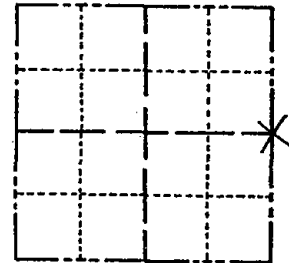


- SET 3/4" x 18" IRON REBAR, 1.50#/FT
- ⊙ FOUND 1-1/4" IRON ROD
- ⊕ FOUND HARRISON MONUMENT
- ⊞ NW CORNER OF ELEC. PED.
- VINYL "T" POST

# Government Land Corner Certificate

ADAMS County  
 TYPE OF MONUMENT: HARRISON  
 STATE PLANE COORDINATES: N \_\_\_\_\_  
 E \_\_\_\_\_  
 ELEVATION — M.S.L. DATUM: \_\_\_\_\_  
 THETA ANGLE: \_\_\_\_\_  
 FIELD BOOK: 88 PAGE 55  
 DRAWN BY: L. COOMBS

CORNER NO. 78  
 SECTION 22  
 TOWN 18  
 RANGE 7



LOCATION  
 (Indicated by 'X')

## BASIS FOR MONUMENT LOCATION

Show info such as: History of corner, with reference to Vol. and pg., dates, surveyor; exact description of monument replaced; if location computed, by taped or EDM traverse; landowner remarks, etc. (Use reverse side if necessary)

SEAL:



No evidence of M.C. Smith post could be found although excavated a 10 x 8' area with backhoe. Corner is reset as Smith did, On line and equidistant between section corners, in this case, both section corner stones were found.  
 (see Vol 1, page 48 Adams County Survey records)

DATA SHOWN HERE ON  
 CERTIFIED CORRECT:

*Anthony B. Kiedrowski*  
 Registered Land Surveyor

DATE: 10/7/81

## TIE SKETCH

Show at least four ties, also fence lines, roads, topo, size and type of witness trees' and if off road - best way to arrive at corner.

