

24 SECTION 18 TOWN 07 RANGE

ADAMS COUNTY

COUNTY CORNER NO: 80
 ROMPORTOL ID: 41807242000

PUBLIC LAND SURVEY MONUMENT RECORD

TYPE OF MONUMENT: HARRISON
 ADAMS COUNTY COORDINATES, NAD 83 (2007)

N. 237866.859

E. 588745.793

ELEVATION- DATUM

FIELD WORK DATE: 1/9/2017

BASIS FOR MONUMENT LOCATION

1981 - PLS 1118 SET A HARRISON BY SINGLE PROPORTIONATE MEASUREMENT.

2017 - PLS 2994 FOUND EXISTING HARRISON 4 INCHES BELOW THE ROAD SURFACE AND 1 EXISTING TIE AND 2 WITNESSES. THE HARRISON AGREES WITH EXISTING WITNESSES AND TIE. ACCEPTED HARRISON AND SET 3 NEW TIES.



LOCATION
 (INDICATE CORNER BY "X")

SEAL:

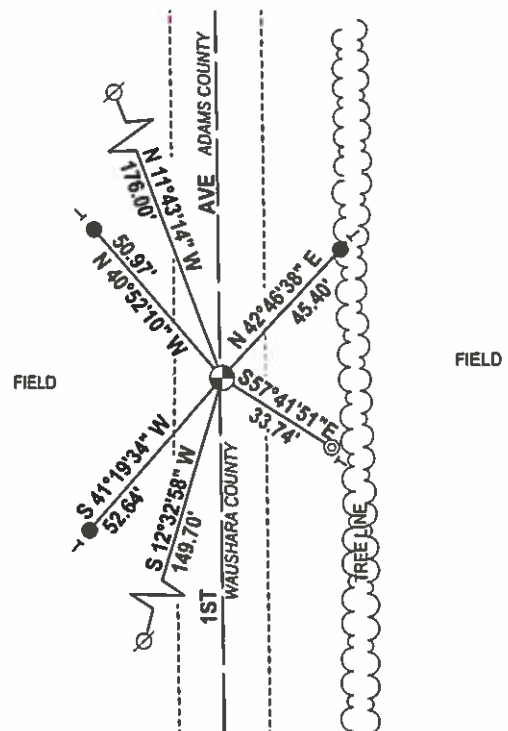
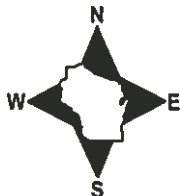


DATA SHOWN HERE ON THIS SHEET IS CORRECT AND COMPLETE TO THE BEST OF MY KNOWLEDGE AND BELIEF.

PROFESSIONAL LAND SURVEYOR

DATE 2/9/17

- TIE SKETCH



- 3/4" x 18" IRON REBAR SET, 1.50#/FT
- ⊙ 3/4" IRON REBAR FOUND
- ⊗ NAIL IN POWER POLE FOUND
- ⊕ HARRISON FOUND
- VINYL "T" POST

Government Land Corner Certificate

ADAMS County

TYPE OF MONUMENT: _____

STATE PLANE COORDINATES: N _____
E _____

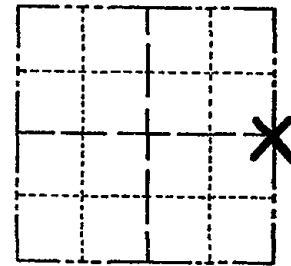
ELEVATION — M.S.L. DATUM: _____

THETA ANGLE: _____

FIELD BOOK: _____ PAGE _____

DRAWN BY: S.J. Hammerschild

CORNER NO. 80
SECTION 24
TOWN 18
RANGE 7



LOCATION
(Indicated by 'X')

BASIS FOR MONUMENT LOCATION

Show info such as: History of corner, with reference to Vol. and pg., dates, surveyor; exact description of monument replaced; if location computed, by taped or EDM traverse; landowner remarks, etc. (Use reverse side if necessary)

SEAL:

O.K. 5-27-82 PK-SS
" 2-20-87 SS
" 12-4-91 KE-JG
2-17-97 OK JG-SS
1-14-02 OK JG
4-3-07 - OK - JG

DATA SHOWN HERE ON
CERTIFIED CORRECT:

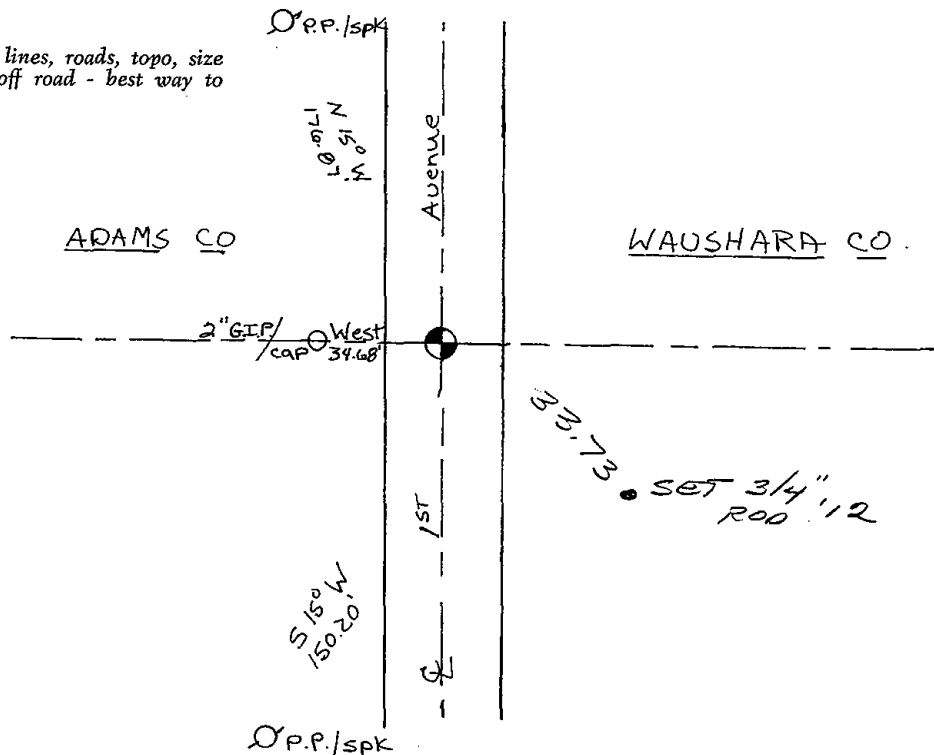
Registered Land Surveyor

DATE: _____

2-28-12 MS 1 NEW TIE

TIE SKETCH

Show at least four ties, also fence lines, roads, topo, size and type of witness trees and if off road - best way to arrive at corner.



STATE OF WISCONSIN
WAUSHARA COUNTY

WAUSHARA COUNTY
CERTIFIED LAND CORNER

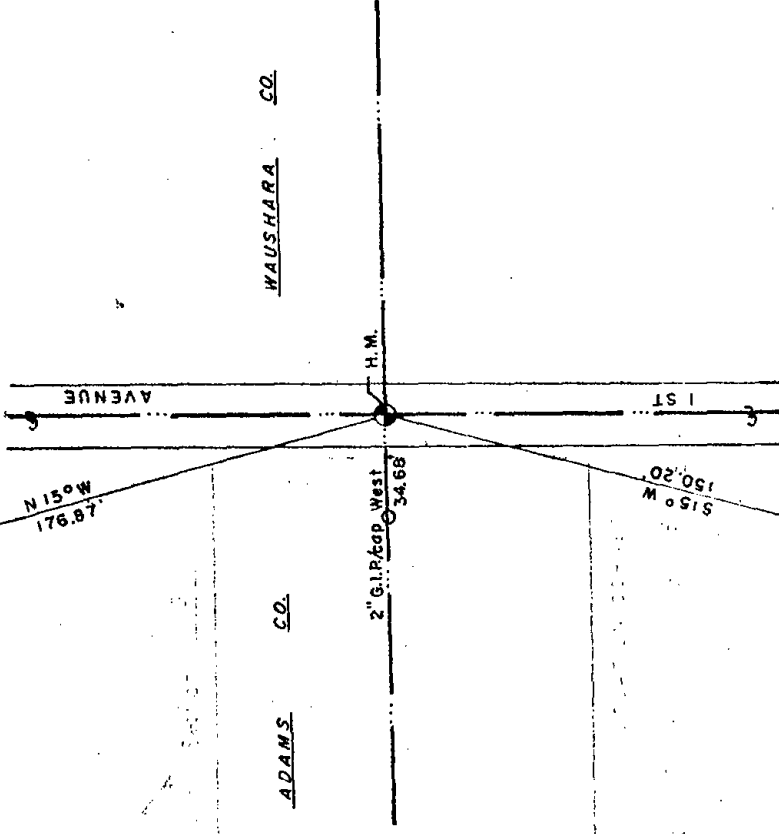
I, Gary E. Schindler, do hereby certify that on the 15th day of Oct 1981, I found (evidence) (no evidence) of the W114 corner of S5E19, T18 N, R8 E, Fourth Principal Meridian, and I re-established said corner according to the Wisconsin Statutes as shown and described hereon.

Dated this 12th day of Oct 1981
Gary E. Schindler
Waushara County Surveyor

Monument set by single proportionate
measurement

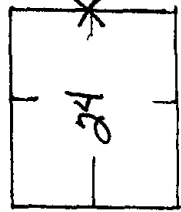
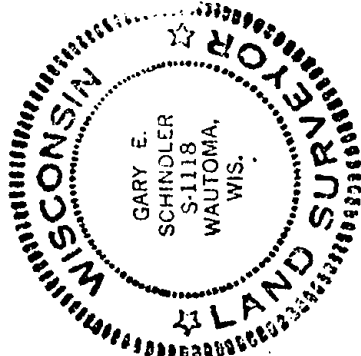
Description of corner evidence found:

OPR/SPK.



ADAMS CO.

WAUSHARA CO.



SEE SECTION FILES
FOR ORIGINAL COPY.

ORDER

WISCONSIN COORDINATE SYSTEM			
North (Y)	East (X)	Elevation (Z)	Zone

Control Sta. Name

Approved By:

80
24
18
7

