

19 SECTION 18 TOWN 07 RANGE

# ADAMS COUNTY

COUNTY CORNER NO: 82  
 ROMPORTOL ID: 41807190020

## PUBLIC LAND SURVEY MONUMENT RECORD

TYPE OF MONUMENT: HARRISON (BROKEN-TOP)  
 ADAMS COUNTY COORDINATES, NAD 83 (2007)

N. 235017.086

E. 559666.240

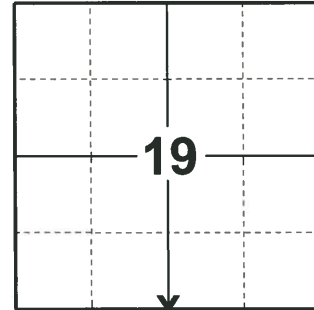
ELEVATION- - - - DATUM - - - -

FIELD WORK DATE: 01/23/2020

### BASIS FOR MONUMENT LOCATION

1983 - PLS 1478 FOUND NO EVIDENCE OF ORIGINAL MONUMENTATION OR RESURVEYS. SET HARRISON MONUMENT ON LINE AT PROPORTIONATE DISTANCES FROM ADJACENT CORNERS.

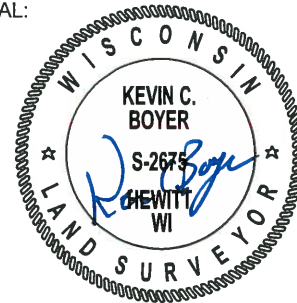
2020 - PLS 2675 FOUND HARRISON (BROKEN-TOP) MONUMENT 12"± BELOW THE ROAD SURFACE, 1 TIE, AND 1 WITNESS. THE MONUMENT AGREES WITH THE TIE AND WITNESS. ACCEPTED THE HARRISON (BROKEN-TOP) MONUMENT AS THE CORNER LOCATION. SET 3 NEW TIES AND MEASURED TO THE EXISTING TIE AND WITNESS.



LOCATION

(INDICATE CORNER BY "X")

SEAL:



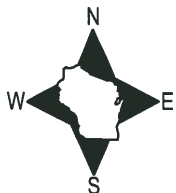
DATA SHOWN HERE ON THIS TIE SHEET IS CORRECT AND COMPLETE TO THE BEST OF MY KNOWLEDGE AND BELIEF.

PROFESSIONAL LAND SURVEYOR

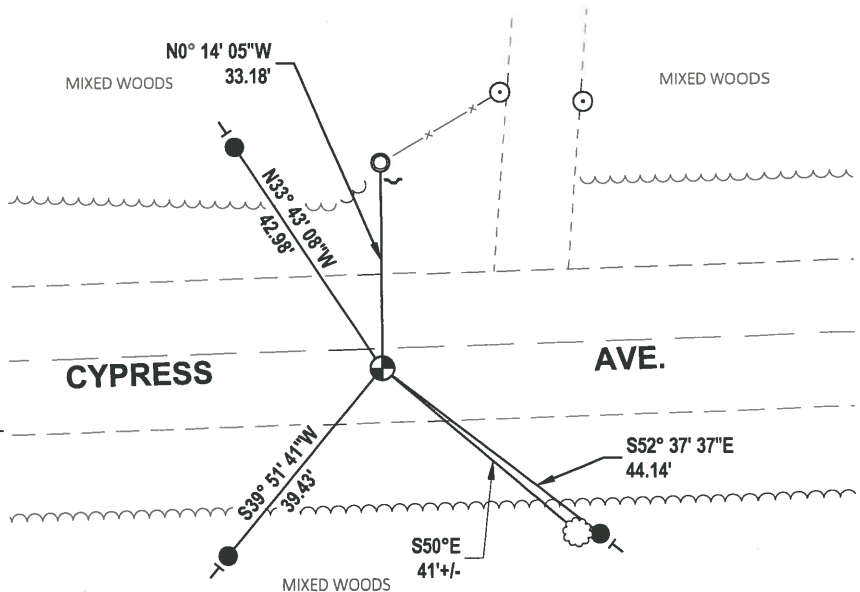
DATE 3/9/2020

### - TIE SKETCH

NOTE: THE CORNER LANDS 3.2'± SOUTH OF CENTERLINE OF CYPRESS AVE



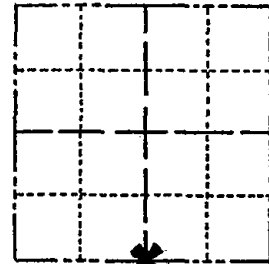
- SET 3/4" x 18" IRON REBAR, 1.50#/FT
- FOUND 1-1/4" O.D. IRON PIPE
- ⊙ FOUND HARRISON (BROKEN-TOP) MONUMENT
- POST
- ┘ STEEL FENCE POST
- VINYL "T" POST
- ⊗ WITNESS TREE



# Government Land Corner Certificate

**ADAMS** County  
 TYPE OF MONUMENT: Harrison Standard  
 STATE PLANE COORDINATES: N \_\_\_\_\_  
 E \_\_\_\_\_  
 ELEVATION — M.S.L. DATUM: \_\_\_\_\_  
 THETA ANGLE: \_\_\_\_\_  
 FIELD BOOK: 3 PAGE 154  
 DRAWN BY: Sorensen

CORNER NO. 82  
 SECTION 19  
 TOWN 18  
 RANGE 7



LOCATION  
(Indicated by 'X')

## BASIS FOR MONUMENT LOCATION

Show info such as: History of corner, with reference to Vol. and pg., dates, surveyor; exact description of monument replaced; if location computed, by taped or EDM traverse; landowner remarks, etc. (Use reverse side if necessary)

Found no evidence of original monumentation or resurveys. Set monument on line at proportionate distances from adjacent corners.

SEAL:



DATA SHOWN HERE ON  
CERTIFIED CORRECT:

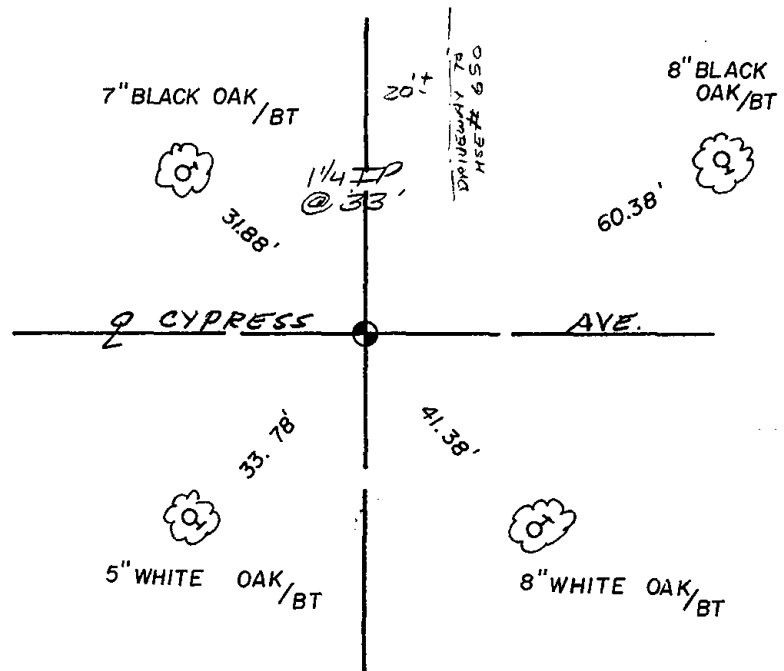
Gregory P. Rhinehart  
Registered Land Surveyor

DATE: May 23, 1983

filed for record this 9th  
 day of June 1983  
 per 59.60 Wisconsin Statutes.  
G. Rhinehart  
 ADAMS COUNTY SURVEYOR

## TIE SKETCH

Show at least four ties, also fence lines, roads, topo, size and type of witness trees' and if off road - best way to arrive at corner.



## MAINTENANCE RECORD

Date	Init.	Remarks
2-18-86	SS	OK
11-22-91	KZ-SG	OK
4-21-97	JG-SS	OK
1-08-02	JG	OK
3-23-07	JG-SS	OK
02-29-12	SS	OK

