

19 SECTION 18 TOWN 07 RANGE

ADAMS COUNTY

COUNTY CORNER NO: 83
ROMPORTOL ID: 41807190000

PUBLIC LAND SURVEY MONUMENT RECORD

TYPE OF MONUMENT: HARRISON (BROKEN-TOP)
ADAMS COUNTY COORDINATES, NAD 83 (2007)

N. 235083.781

E. 562303.984

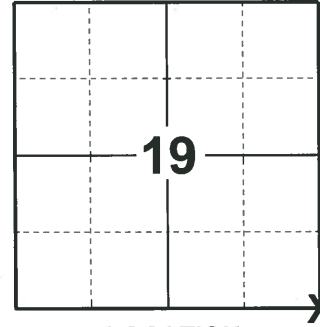
ELEVATION- - - - DATUM - - - -

FIELD WORK DATE: 01/23/2020

BASIS FOR MONUMENT LOCATION

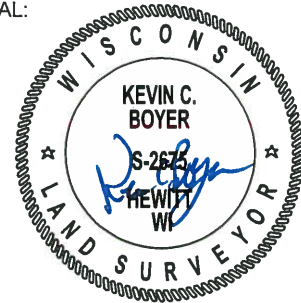
1983 - PLS 1478 SET HARRISON MONUMENT AT INTERSECTION OF FENCE LINE FROM NORTH AND CENTERLINE EXTENDED FROM WEST. THIS LOCATION BEST MATCHES RECORDED DISTANCES FROM ORIGINAL NOTES TO ADJACENT MONUMENTATION. EXCAVATION BY HAND YIELDED NO EVIDENCE OF PREVIOUS MONUMENTATION.

2020 - PLS 2675 FOUND HARRISON (BROKEN-TOP) 10"± BELOW THE ROAD SURFACE AND 1 WITNESS TREE. THE MONUMENT AGREES WITH THE WITNESS TREE. ACCEPTED THE HARRISON (BROKEN-TOP) MONUMENT AS THE CORNER LOCATION. SET 4 NEW TIES AND MEASURED TO THE WITNESS TREE.



LOCATION
(INDICATE CORNER BY "X")

SEAL:



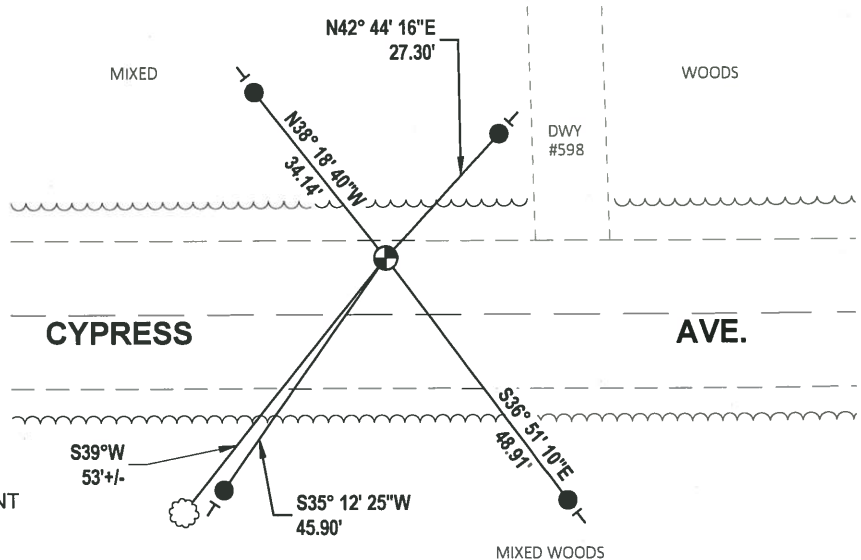
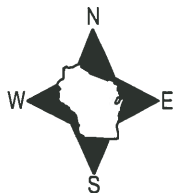
DATA SHOWN HERE ON THIS TIE SHEET IS CORRECT AND COMPLETE TO THE BEST OF MY KNOWLEDGE AND BELIEF.

PROFESSIONAL LAND SURVEYOR

DATE 3/9/2020

TIE SKETCH

NOTE: THE CORNER LANDS 9'± NORTH OF CENTERLINE OF CYPRESS AVE.

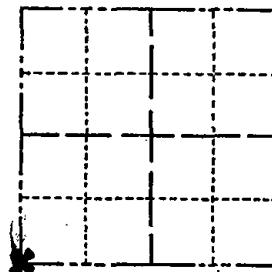


- SET 3/4" x 18" IRON REBAR, 1.50#/FT
- ⊕ FOUND HARRISON (BROKEN-TOP) MONUMENT
- VINYL "T" POST
- ☼ WITNESS TREE

Government Land Corner Certificate

ADAMS County
 TYPE OF MONUMENT: Harrison Standard
 STATE PLANE COORDINATES: N _____
 E _____
 ELEVATION — M.S.L. DATUM: _____
 THETA ANGLE: _____
 FIELD BOOK: 3 PAGE 153
 DRAWN BY: Sorensen

CORNER NO. 83
 SECTION 20
 TOWN 18
 RANGE 7



LOCATION
(Indicated by 'X')

SEAL:



DATA SHOWN HERE ON
CERTIFIED CORRECT:

Gregory P. Rhinehart
 Registered Land Surveyor
 DATE: May 23, 1983

BASIS FOR MONUMENT LOCATION

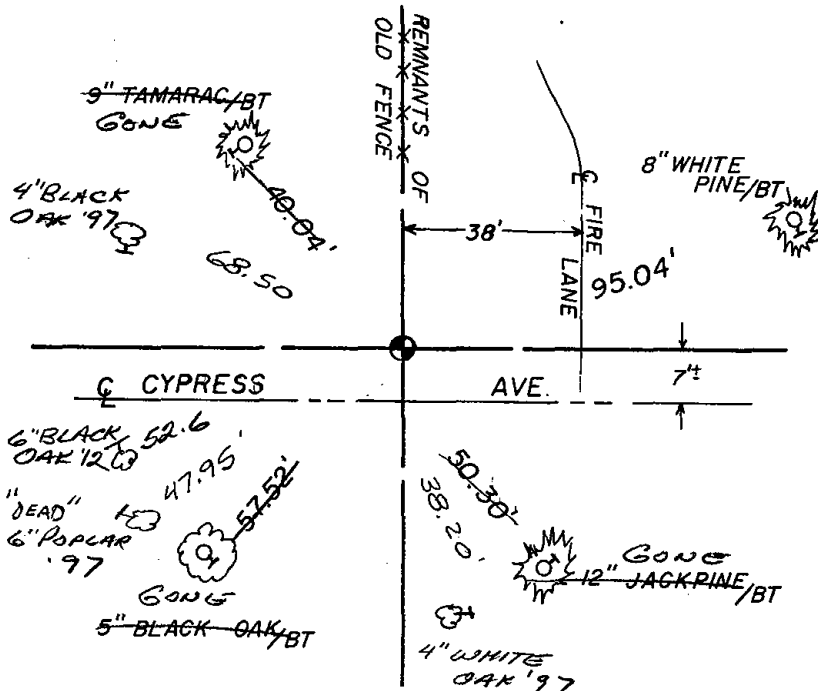
Show info such as: History of corner, with reference to Vol. and pg., dates, surveyor; exact description of monument replaced; if location computed, by taped or EDM traverse; landowner remarks, etc. (Use reverse side if necessary)

Set monument at intersection of fenceline from north and centerline extended from west. This location best matches recorded distances from original notes to adjacent monumentation. Excavation by hand yielded no evidence of previous monumentation.

filed for record this 8th
 day of JUNE 1983
 per 59.60 Wisconsin Statutes.
G. Rhinehart
 ADAMS COUNTY SURVEYOR

TIE SKETCH

Show at least four ties, also fence lines, roads, topo, size and type of witness trees' and if off road - best way to arrive at corner.



MAINTENANCE RECORD

Date	Init.	Remarks
2-18-87	SS	OK
11-22-91	KZ-JG	OK
4-21-97	JG-SS	3 GONE - 3 NEW TIES
1-08-02	JG	OK
3-23-07	JG-SS	OK
02-29-12	SS	1 NEW TIE

Handwritten scribbles and marks, possibly a signature or initials, located in the upper left quadrant of the page.

Handwritten scribbles and marks, possibly a signature or initials, located in the lower left quadrant of the page.