

PUBLIC LAND SURVEY MONUMENT RECORD

TYPE OF MONUMENT: HARRISON
 ADAMS COUNTY COORDINATES, NAD 83 (2007)

N. 235118.087

E. 583458.844

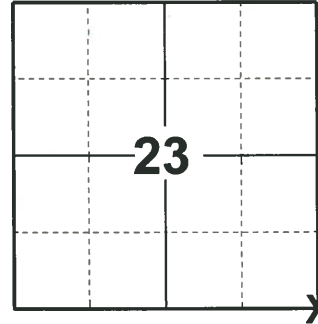
ELEVATION- - - DATUM - -

FIELD WORK DATE: 02/05/2020

BASIS FOR MONUMENT LOCATION

1981 - PLS 878 EXCAVATED 8'X10' HOLE AT THE CENTERLINE-CENTERLINE OF ROADS, FOUND NOTHING. AFTER ANALYZING A TRAVERSE OF SECTIONS 24, 25, & 36, RETURNED TO EXCAVATE 35' FURTHER NORTH, AGAIN FOUND NOTHING. THE NORTH-SOUTH LOCATION OF THIS CORNER IS SET BY PROPORTIONAL MEASUREMENT OF THE DISTANCE BETWEEN THE SW CORNER OF SECTION 36 AND THE NW CORNER OF SECTION 24. EAST-WEST LOCATION IS SET BY DOUBLING THE DISTANCE BETWEEN SECTION MONUMENTS AT THE SW AND S1/4 CORNERS OF SECTION 23, BEING STONE AND FLAT IRON BAR.

2020 - PLS 2675 FOUND HARRISON MONUMENT 6"± BELOW THE ROAD SURFACE AND 1 WITNESS. THE MONUMENT AGREES WITH THE WITNESS. ACCEPTED THE HARRISON MONUMENT AS THE CORNER LOCATION. SET 4 NEW TIES AND MEASURED TO THE EXISTING WITNESS.



LOCATION
 (INDICATE CORNER BY "X")

SEAL:



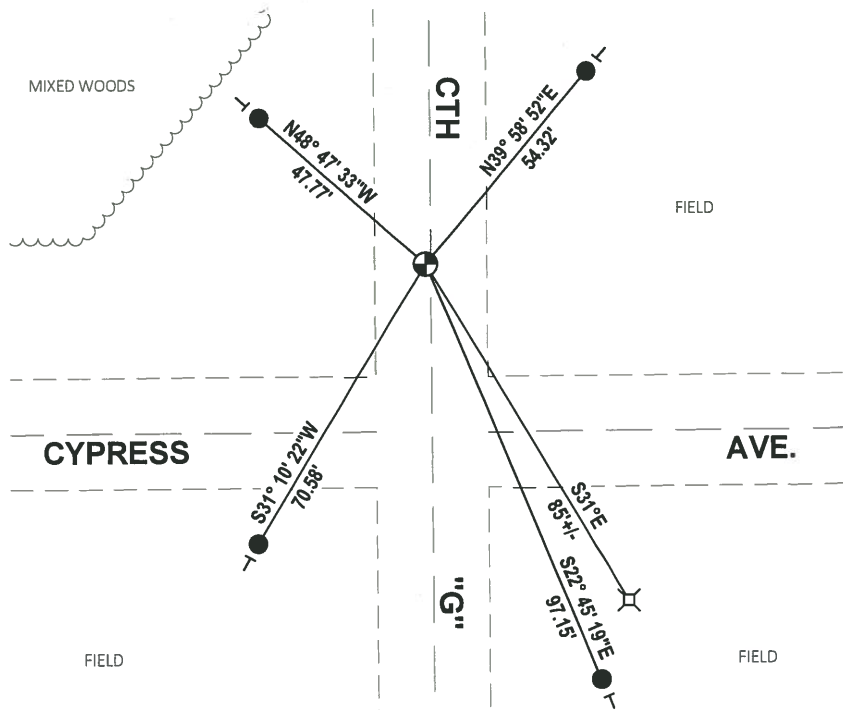
DATA SHOWN HERE ON THIS TIE SHEET IS CORRECT AND COMPLETE TO THE BEST OF MY KNOWLEDGE AND BELIEF.

PROFESSIONAL LAND SURVEYOR

DATE 3/9/2020

- TIE SKETCH -

NOTE: THE CORNER LANDS 1'± WEST OF CTH "G" CENTERLINE AND 36'± NORTH OF CYPRESS AVE. CENTERLINE

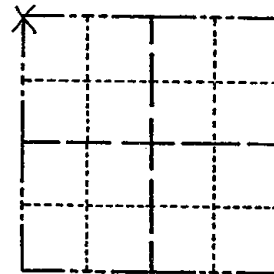


- SET 3/4" x 18" IRON REBAR, 1.50#/FT
- ⊕ FOUND HARRISON MONUMENT
- VINYL "T" POST
- ⊗ ELEC. PED. #SP12956

Government Land Corner Certificate

ADAMS County
 TYPE OF MONUMENT: HARRISON
 STATE PLANE COORDINATES: N _____
 E _____
 ELEVATION — M.S.L. DATUM: _____
 THETA ANGLE: _____
 FIELD BOOK: 88 PAGE 70
 DRAWN BY: L. COOMBS

CORNER NO. 91
 SECTION 25
 TOWN 18
 RANGE 7



BASIS FOR MONUMENT LOCATION

Show info such as: History of corner, with reference to Vol. and pg., dates, surveyor; exact description of monument replaced; if location computed, by taped or EDM traverse; landowner remarks, etc. (Use reverse side if necessary)

Excavated 8'x10' hole at the centerline-centerline of roads, found nothing. After analyzing a traverse of Sections 24, 25 & 36, returned to excavate 35' further North, again found nothing. The North-South location of this corner is set by proportional measurement of the distance between the SW corner of Section 36 and the NW corner of Section 24. East-West location is set by doubling the distance between Section monuments at the SW and S $\frac{1}{2}$ corners of Section 23, being stone and a flat iron bar.

LOCATION
(Indicated by 'X')

SEAL:



DATA SHOWN HERE ON
CERTIFIED CORRECT:

Anthony B. Kiedrowski
Registered Land Surveyor

DATE: 10/7/81

TIE SKETCH

Show at least four ties, also fence lines, roads, topo, size and type of witness trees and if off road - best way to arrive at corner.

