

24 SECTION 18 TOWN 07 RANGE

# ADAMS COUNTY

COUNTY CORNER NO: 93  
ROMPORTOL ID: 41807240000

## PUBLIC LAND SURVEY MONUMENT RECORD

TYPE OF MONUMENT: HARRISON  
ADAMS COUNTY COORDINATES, NAD 83 (2007)

N. 235214.345

E. 588764.165

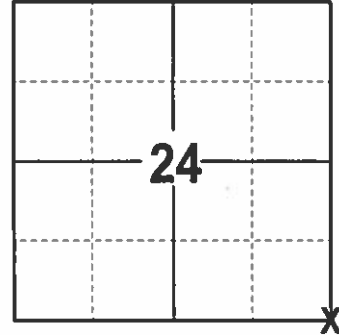
ELEVATION-      DATUM     

FIELD WORK DATE: 1/9/2017

### BASIS FOR MONUMENT LOCATION

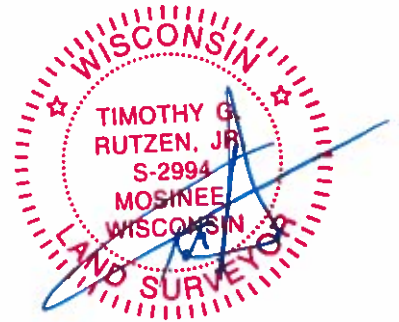
1981 - PLS 1118 EXCAVATED AND FOUND NOTHING. CHECKED THE OCCUPIED CORNER WITH GOVERNMENT DISTANCES NORTH AND SOUTH AND SET A HARRISON.

2017 - PLS 2994 FOUND EXISTING HARRISON 3 INCHES BELOW THE ROAD SURFACE AND 1 EXISTING TIE AND 2 WITNESSES. THE HARRISON AGREES WITH EXISTING WITNESSES AND TIE. ACCEPTED HARRISON AND SET 3 NEW TIES.



LOCATION  
(INDICATE CORNER BY "X")

SEAL:



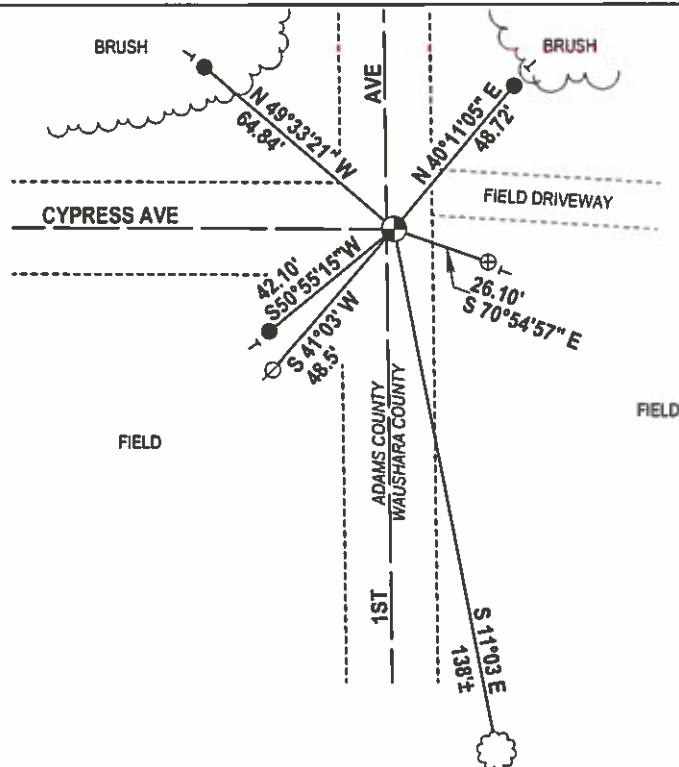
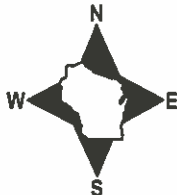
DATA SHOWN HERE ON THIS TIE SHEET IS CORRECT AND COMPLETE TO THE BEST OF MY KNOWLEDGE AND BELIEF.

PROFESSIONAL LAND SURVEYOR

DATE 2/9/17

### TIE SKETCH

NOTE: THE CORNER FALLS 2'± EAST OF THE CENTERLINE OF 1ST AVE.

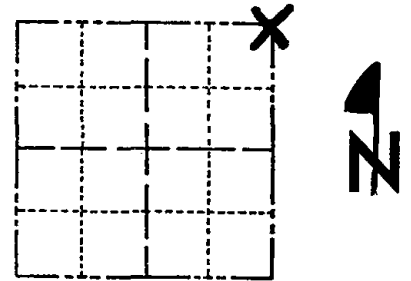


- 3/4" x 18" IRON REBAR SET, 1.50#/FT
- ⊕ 2" OD IRON PIPE WITH CAP FOUND
- ⊗ NAIL IN POWER PIPE FOUND
- ⊙ HARRISON FOUND
- ⊖ VINYL "T" POST
- ⊕ WITNESS TREE FOUND

# Government Land Corner Certificate

ADAMS County  
 TYPE OF MONUMENT: \_\_\_\_\_  
 STATE PLANE COORDINATES: N \_\_\_\_\_  
 E \_\_\_\_\_  
 ELEVATION — M.S.L. DATUM: \_\_\_\_\_  
 THETA ANGLE: \_\_\_\_\_  
 FIELD BOOK: \_\_\_\_\_ PAGE \_\_\_\_\_  
 DRAWN BY: S.J. Haumschild

CORNER NO. 93  
 SECTION 25  
 TOWN 18  
 RANGE 7



LOCATION  
(Indicated by 'X')

## BASIS FOR MONUMENT LOCATION

Show info such as: History of corner, with reference to Vol. and pg., dates, surveyor; exact description of monument replaced; if location computed, by taped or EDM traverse; landowner remarks, etc. (Use reverse side if necessary)

SEAL:

DATA SHOWN HERE ON  
CERTIFIED CORRECT:

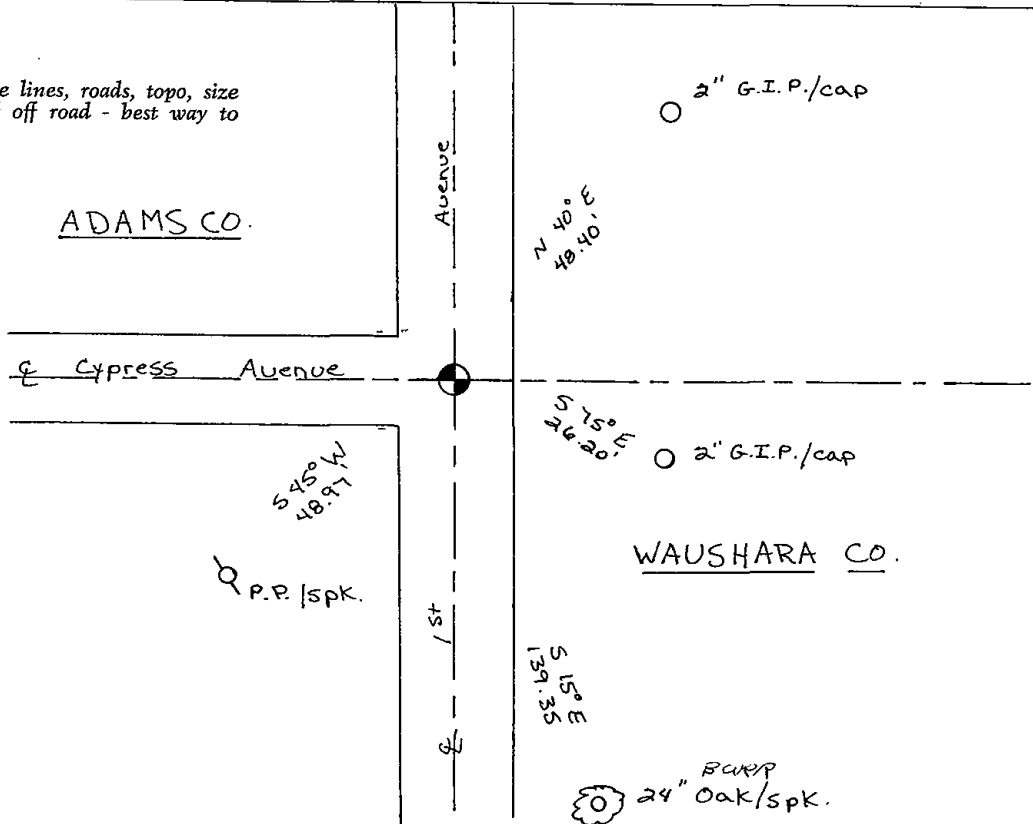
Registered Land Surveyor

DATE: \_\_\_\_\_

12-4-91 KE-SG OK  
 2-17-97 OK JG-SS  
 1-14-02 OK JG  
 4-3-07 OK -JG

## TIE SKETCH

Show at least four ties, also fence lines, roads, topo, size and type of witness trees' and if off road - best way to arrive at corner.



BURP  
24" OAK/spk.



WAUSHARA COUNTY  
CERTIFIED LAND CORNER

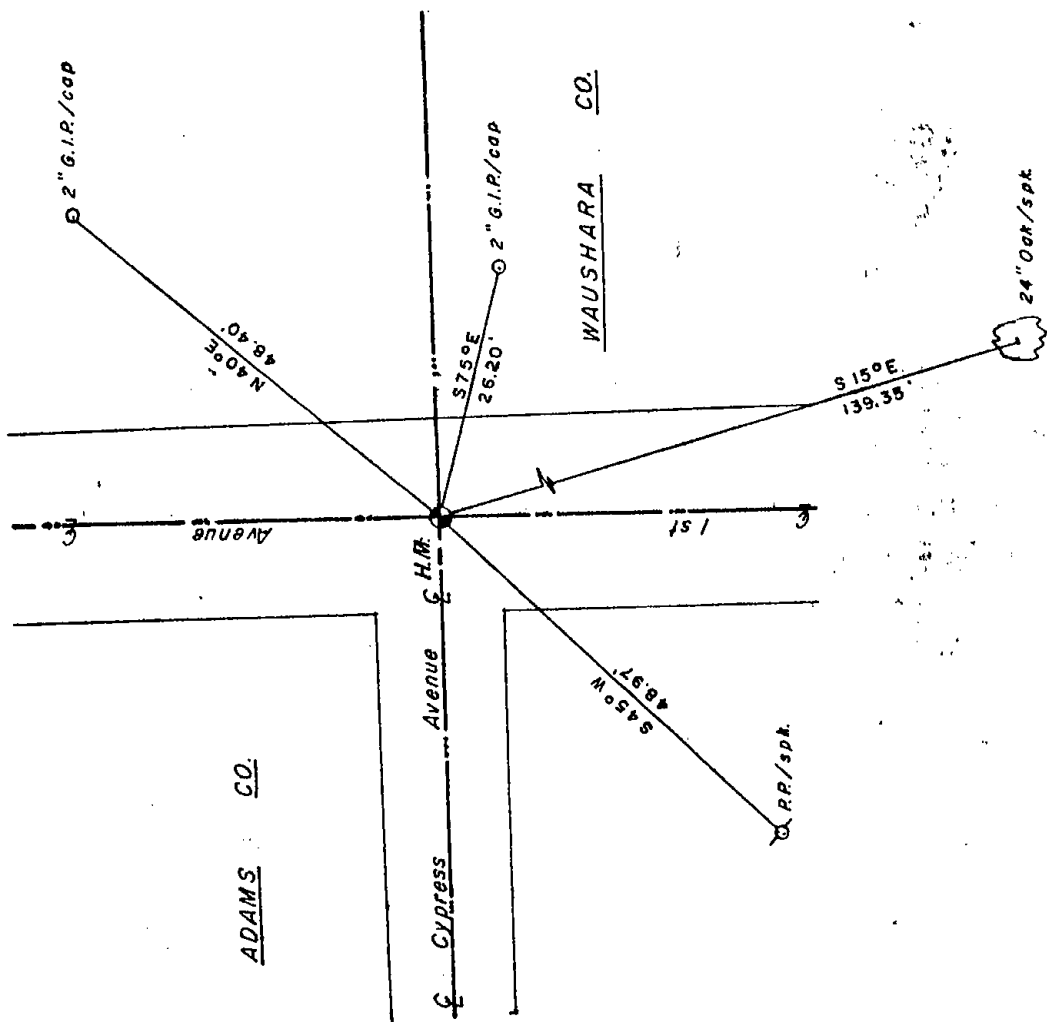
STATE WISCONSIN SS  
WAUSHARA COUNTY

I, Gary E. Schindler, do hereby certify that on the 15th day of Oct 19 81, I found (evidence) (no evidence) of the NW corner of S&W 30, T 18 N, R 8 E, Fourth Principal Meridian, and I re-established said corner according to the Wisconsin Statutes as shown and described hereon.

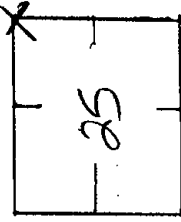
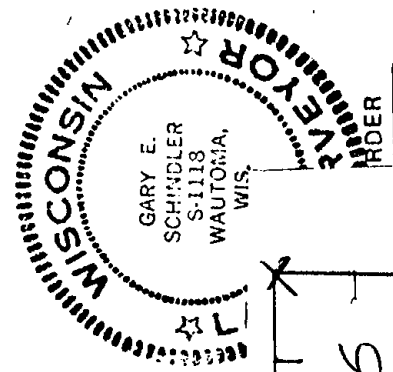
Dated this 12th day of Oct 1981  
Gary E. Schindler  
Waushara County Surveyor

We excavated and found no evidence of previous monumentation. We checked the occupied corner with government distances north and south. The corner fit proportionally well. Monumented same

Description of corner evidence found: Road & s



# 93  
25  
18  
7



WISCONSIN COORDINATE SYSTEM		
North (Y)	Elevation (Z)	Zone
East (X)		

SEE SECTION FILES FOR ORIGINAL COPY.

Approved By:

Control Sta. Name

