

28
SECTION

18
TOWN

07
RANGE

ADAMS COUNTY

COUNTY CORNER NO: 97
ROMPORTOL ID: 41807282000

PUBLIC LAND SURVEY MONUMENT RECORD

TYPE OF MONUMENT: HARRISON
ADAMS COUNTY COORDINATES, NAD 83 (2007)

N. 232415.506

E. 572926.813

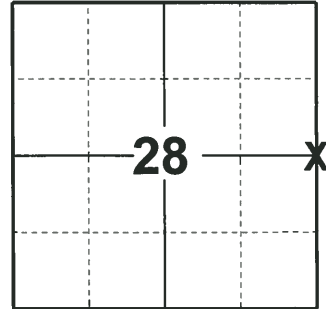
ELEVATION- DATUM

FIELD WORK DATE: 01/16/2020

BASIS FOR MONUMENT LOCATION

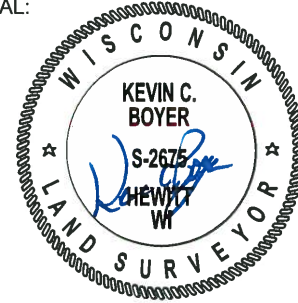
1983 - PLS 1444 HARRISON MONUMENT WAS SET EQUIDISTANT AND ON LINE BETWEEN SECTION CORNERS. ANTHONY B. KIEDROWSKI DUG NEAR THIS LOCATION BUT DID NOT FIND ANYTHING. CORNER DOES NOT FALL IN DIG HOLE, BUT IT APPEARS THAT IF ANY MONUMENTATION WAS NEAR THIS CORNER, IT WOULD HAVE BEEN DESTROYED WHEN THE ROAD WAS BUILT.

2020 - PLS 2675 FOUND HARRISON MONUMENT 4"± BELOW THE ROAD SURFACE AND 1 WITNESS TREE. THE MONUMENT AGREES WITH THE EXISTING WITNESS TREE. ACCEPTED THE HARRISON MONUMENT AS THE CORNER LOCATION. SET 3 NEW TIES AND MEASURED TO A FOUND PROPERTY IRON AND THE EXISTING WITNESS TREE.



LOCATION
(INDICATE CORNER BY "X")

SEAL:



DATA SHOWN HERE ON THIS TIE SHEET IS CORRECT AND COMPLETE TO THE BEST OF MY KNOWLEDGE AND BELIEF.

PROFESSIONAL LAND SURVEYOR

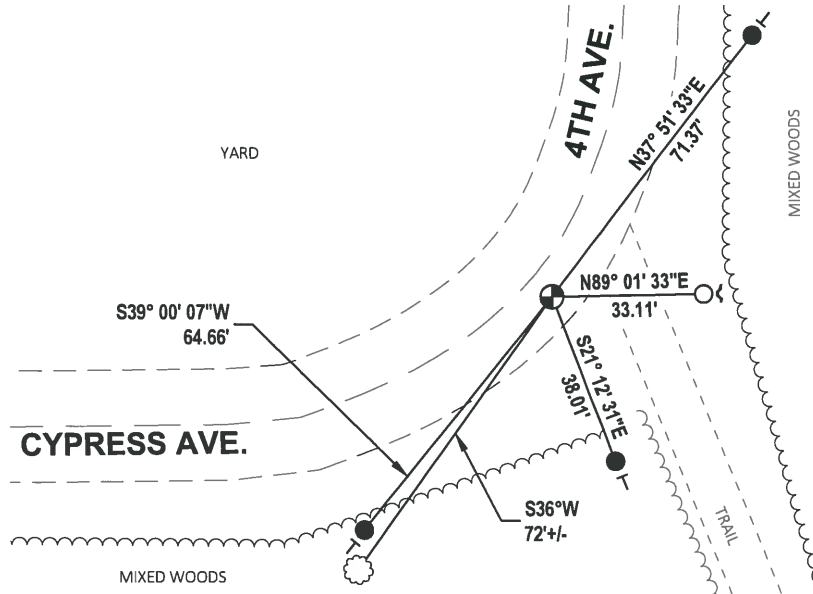
DATE 3/9/2020

- TIE SKETCH

NOTE: THE CORNER LANDS 6"±
SOUTHEAST OF CYPRESS
AVE./4TH AVE. CENTERLINE



- SET 3/4" x 18" IRON REBAR, 1.50#/FT
- FOUND 3/4" IRON ROD
- FOUND HARRISON MONUMENT
- ~ STEEL FENCE POST
- VINYL "T" POST
- ☉ WITNESS TREE



Government Land Corner Certificate

ADAMS County

CORNER NO. 97
 SECTION 28
 TOWN 18
 RANGE 7

TYPE OF MONUMENT: HARRISON

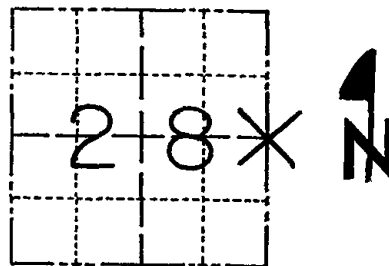
STATE PLANE COORDINATES: N _____
 E _____

ELEVATION — M.S.L. DATUM: _____

THETA ANGLE: _____

FIELD BOOK: 91 PAGE 76

DRAWN BY: S.J.H.

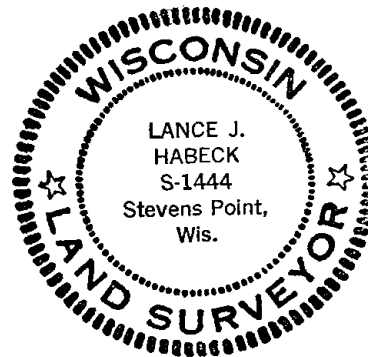


BASIS FOR MONUMENT LOCATION

Show info such as: History of corner, with reference to Vol. and pg., dates, surveyor; exact description of monument replaced; if location computed, by taped or EDM traverse; landowner remarks, etc. (Use reverse side if necessary)

This corner was set equidistant and on line between Section corners. Anthony B. Kiedrowski dug near this location but did not find anything. Corner does not fall in dig hole but it appears that if any monumentation was near this corner, it would have been destroyed when the road was built.

SEAL:



DATA SHOWN HERE ON CERTIFIED CORRECT:

Lance J. Habeck
 Registered Land Surveyor

DATE: 5/18/83

filed for record this 83
 day of JUNE 1983
 per 59.60 Wisconsin Statutes.
D. Christman
 ADAMS COUNTY SURVEYOR

TIE SKETCH

Show at least four ties, also fence lines, roads, topo, size and type of witness trees and if off road - best way to arrive at corner.

