

30  
SECTION

18  
TOWN

07  
RANGE

# ADAMS COUNTY

COUNTY CORNER NO: 102

ROMPORTOL ID: 41807300020

## PUBLIC LAND SURVEY MONUMENT RECORD

TYPE OF MONUMENT: HARRISON (BROKEN-TOP)  
ADAMS COUNTY COORDINATES, NAD 83 (2007)

N. 229730.783

E. 559710.106

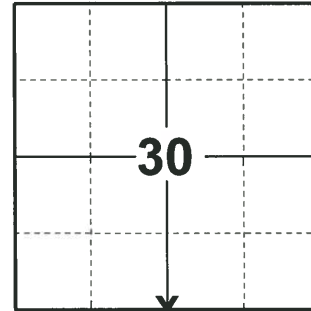
ELEVATION- - - - - DATUM - - - - -

FIELD WORK DATE: 01/16/2020

### BASIS FOR MONUMENT LOCATION

1977 - PLS 1478 RAN EDM/T2 TRAVERSE AROUND SECTION 31 & 32 AND TO ADJOINING SECTION CORNERS TO DETERMINE SEARCH AREAS FOR INVESTIGATION. EXCAVATION WITH BACKHOE YIELDED NO EVIDENCE OF THE ORIGINAL CORNER OF ANY SUBSEQUENT REMONUMENTATION. COULD FIND NO EVIDENCE OF ANY BEARING TREES. RELOCATED CORNER BY SINGLE PROPORTIONATE MEASURE BETWEEN ADJACENT SECTION CORNERS. SET HARRISON MONUMENT.

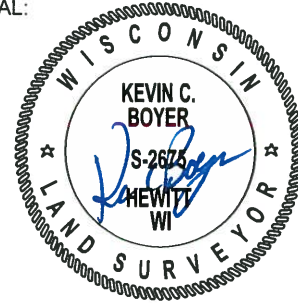
2020 - PLS 2675 FOUND HARRISON (BROKEN-TOP) MONUMENT 12"± BELOW THE ROAD SURFACE, 2 TIES, AND 2 WITNESSES. THE MONUMENT AGREES WITH ALL TIES AND WITNESSES. ACCEPTED THE HARRISON (BROKEN-TOP) MONUMENT AS THE CORNER LOCATION. SET 2 NEW TIES AND MEASURED TO A FOUND PROPERTY IRON, EXISTING TIES, AND WITNESSES.



**LOCATION**

(INDICATE CORNER BY "X")

SEAL:



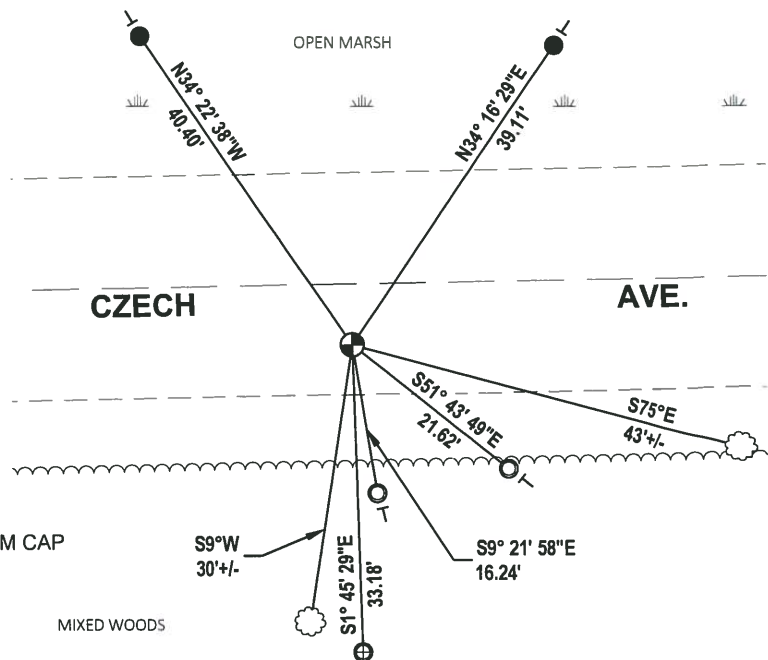
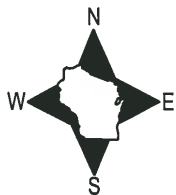
DATA SHOWN HERE ON THIS TIE SHEET IS CORRECT AND COMPLETE TO THE BEST OF MY KNOWLEDGE AND BELIEF.

PROFESSIONAL LAND SURVEYOR

DATE 3/9/2020

### - TIE SKETCH

NOTE: THE CORNER LANDS 7± SOUTH OF THE CENTERLINE CZECH AVE.

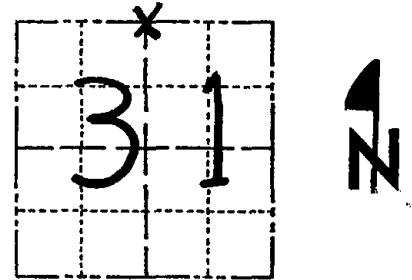


- SET 3/4" x 18" IRON REBAR, 1.50#/FT
- ⊕ FOUND 1.0 O.D. IRON PIPE
- FOUND 1-1/4" O.D. IRON PIPE W/ADAMS CO. ALUMINUM CAP
- ⊙ FOUND HARRISON (BROKEN-TOP) MONUMENT
- VINYL "T" POST
- ☼ WITNESS TREE

# Government Land Corner Certificate

ADAMS County  
 TYPE OF MONUMENT: HARRISON  
 STATE PLANE COORDINATES: N \_\_\_\_\_  
 E \_\_\_\_\_  
 ELEVATION — M.S.L. DATUM: \_\_\_\_\_  
 THETA ANGLE: \_\_\_\_\_  
 FIELD BOOK: 54 PAGE 18  
 DRAWN BY: D.C. HAGEN

CORNER NO. 102  
 SECTION 31  
 TOWN 18 N  
 RANGE 7 E



LOCATION  
 (Indicated by 'X')

## BASIS FOR MONUMENT LOCATION

Show info such as: History of corner, with reference to Vol. and pg., dates, surveyor; exact description of monument replaced; if location computed, by taped or EDM traverse; landowner remarks, etc. (Use reverse side if necessary)

Ran EDM/T2 traverse around Sections 31 and 32 and to adjoining section corners to determine search areas for investigation.

Excavation with backhoe yielded no evidence of the original corner or any subsequent remonumentation. Could find no evidence of any bearing trees.

Relocated corner by single proportionate measure between adjacent section corners.

Set Harrison on 8-15-77.

SEAL:

DATA SHOWN HERE ON  
 CERTIFIED CORRECT:

*Dale C Hagen*  
 Registered Land Surveyor

DATE: 9-14-77

## TIE SKETCH

Show at least four ties, also fence lines, roads, topo, size and type of witness trees' and if off road - best way to arrive at corner.

### NOTES:

- 1) Ties in trees to nail in disc.
- 2) Corner falls in what appears to be an old road bed to the South, which runs into marsh about 200 feet South of corner.

### MAINTENANCE RECORD

Date	Init.	Remarks
8-25-82	PK-SS	TOP BROKEN - BOTTOM IN PLACE ALL NEW TIES
2-10-87	SS	OK
11-22-91	KZ-SG	OK
2-17-97	SG-SS	2-NEW TIES, 1-GONE
1-08-02	SG	OK
3-23-07	SG-SS	OK

