

30
SECTION

18
TOWN

07
RANGE

ADAMS COUNTY

COUNTY CORNER NO.: 103

ROMPORTOL ID: 41807300000

PUBLIC LAND SURVEY MONUMENT RECORD

TYPE OF MONUMENT: HARRISON
ADAMS COUNTY COORDINATES, NAD 83 (2007)

N. 229777.327

E. 562356.888

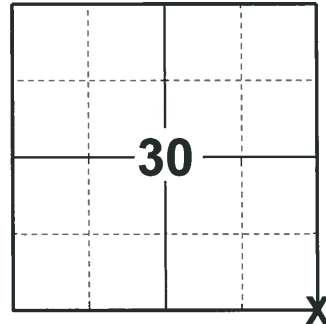
ELEVATION- - - - DATUM - - - -

FIELD WORK DATE: 01/16/2020

BASIS FOR MONUMENT LOCATION

1977 - PLS 1103 RAN EDM/T2 TRAVERSE AROUND SECTIONS 31 AND 32 AND TO ADJACENT SECTION CORNERS TO DETERMINE SEARCH AREAS FOR INVESTIGATION. EXCAVATION WITH BACKHOE YIELDED NO EVIDENCE OF THE ORIGINAL CORNER OR ANY REMONUMENTATION. COULD FIND NO EVIDENCE OF ANY BEARING TREES FROM THE ORIGINAL GOVERNMENT SURVEY. RELOCATED CORNER BY WEIGHTING OCCUPATION AND ORIGINAL DISTANCES, SETTING HARRISON MONUMENT ON THE CENTERLINE OF CZECH AVE AND OPPOSITE AN ANCIENT FENCE TO THE NORTH.

2020 - PLS 2675 FOUND HARRISON MONUMENT 18"± BELOW THE ROAD SURFACE AND 2 WITNESSES. THE MONUMENT AGREES WITH BOTH WITNESSES. ACCEPTED THE HARRISON MONUMENT AS THE CORNER LOCATION. SET 4 NEW TIES AND MEASURED TO THE EXISTING WITNESSES.



LOCATION
(INDICATE CORNER BY "X")

SEAL:



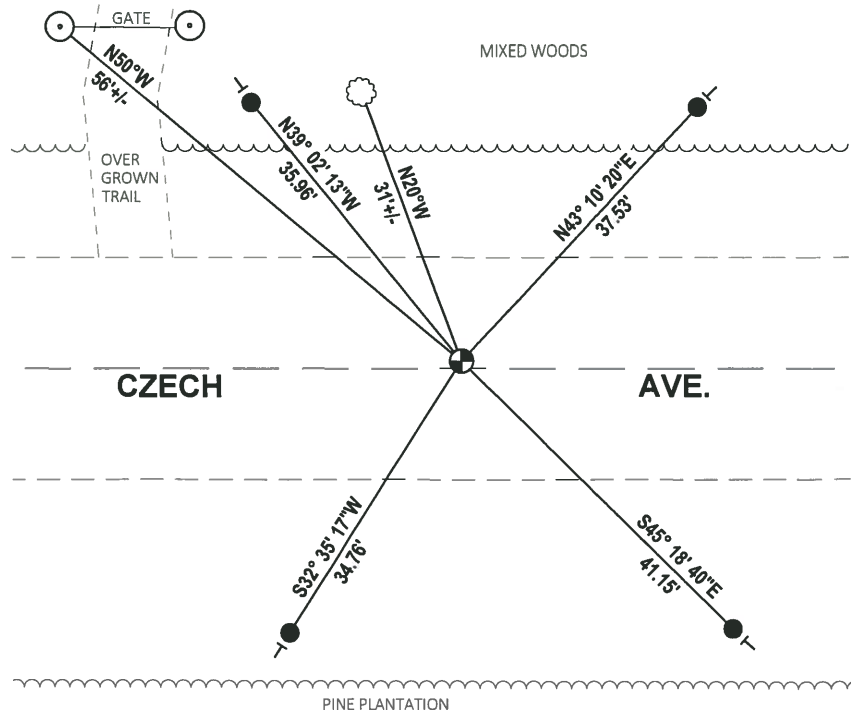
DATA SHOWN HERE ON THIS TIE SHEET IS CORRECT AND COMPLETE TO THE BEST OF MY KNOWLEDGE AND BELIEF.

PROFESSIONAL LAND SURVEYOR

DATE 3/9/2020

- TIE SKETCH

NOTE: THE CORNER LANDS 1'± NORTH OF THE CENTERLINE OF CZECH AVE.

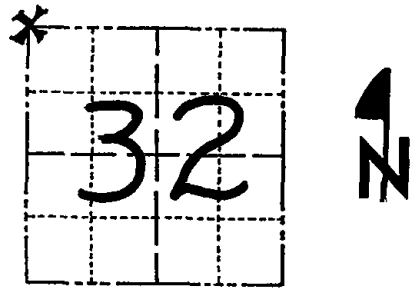


- SET 3/4" x 18" IRON REBAR, 1.50#/FT
- FOUND HARRISON MONUMENT
- ┊ VINYL "T" POST
- ☁ WITNESS TREE
- 3" GATE POST

Government Land Corner Certificate

ADAMS County
 TYPE OF MONUMENT: HARRISON
 STATE PLANE COORDINATES: N _____
 E _____
 ELEVATION — M.S.L. DATUM: _____
 THETA ANGLE: _____
 FIELD BOOK: 54 PAGE 18
 DRAWN BY: D.C. HAGEN

CORNER NO. 103
 SECTION 32
 TOWN 18 N
 RANGE 7 E



LOCATION
(Indicated by 'X')

BASIS FOR MONUMENT LOCATION

Show info such as: History of corner, with reference to Vol. and pg., dates, surveyor; exact description of monument replaced; if location computed, by taped or EDM traverse; landowner remarks, etc. (Use reverse side if necessary)

Ran EDM/T2 traverse around Sections 31 and 32 and to adjacent section corners to determine search areas for investigation.
 Excavation with backhoe yielded no evidence of the original corner or any remonumentation. Could find no evidence of any bearing trees from the original government survey.
 Relocated corner by weighting occupation and original distances, setting this corner on the centerline of Czech Avenue and opposite an ancient fence to the North.
 Set Harrison on 8-15-77.

SEAL:



DATA SHOWN HERE ON CERTIFIED CORRECT:

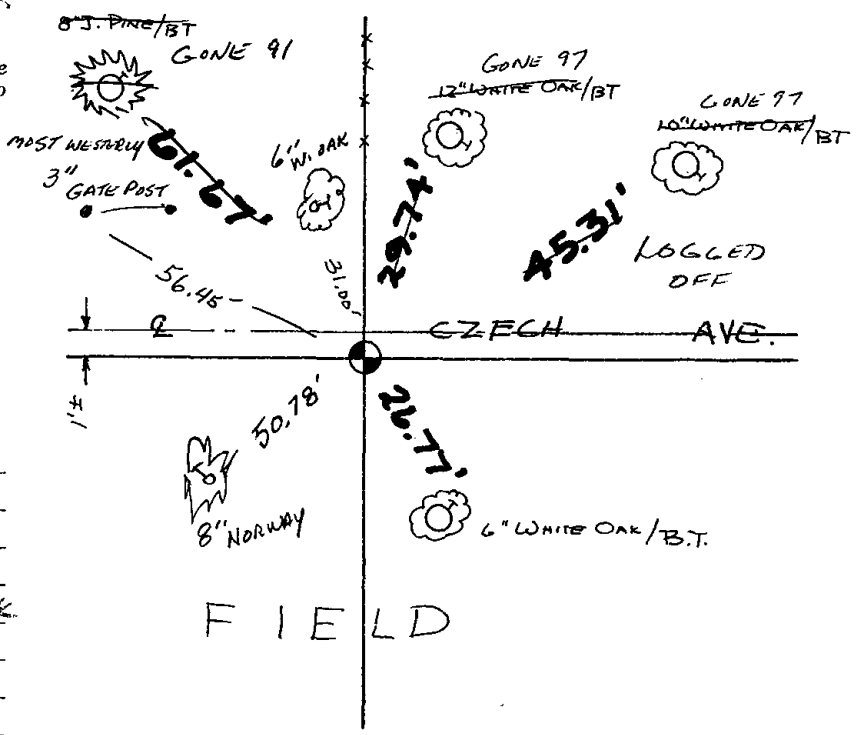
Dale C. Hagen
 Registered Land Surveyor
 DATE: 9-14-77

TIE SKETCH

Show at least four ties, also fence lines, roads, topo, size and type of witness trees' and if off road - best way to arrive at corner.

NOTE

Ties in trees to nail in disc.



MAINTENANCE RECORD

Date	Init.	Remarks
3-26-82	GR-SS	O.K.
2-10-87	SS	"
11-22-91	KZ-JG	1-GONE 1-NEW, CORNER OK.
2-17-97	JG-SS	2-GONE, 2-NEW, COR OK
1-08-02	JG	OK
3-23-07	JG-SS	OK

