

28
SECTION

18
TOWN

07
RANGE

ADAMS COUNTY

COUNTY CORNER NO: 106

ROMPORTOL ID: 41807280020

PUBLIC LAND SURVEY MONUMENT RECORD

TYPE OF MONUMENT: HARRISON
ADAMS COUNTY COORDINATES, NAD 83 (2007)

N. 229789.961

E. 570306.153

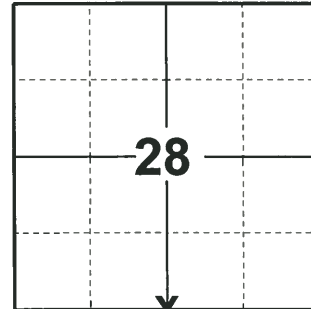
ELEVATION- - - - - DATUM - - - - -

FIELD WORK DATE: 01/16/2020

BASIS FOR MONUMENT LOCATION

1974 - PLS 878 EXCAVATED WITH BACKHOE AND FOUND 6"X8"X16" SANDSTONE. LOWERED STONE AND SET HARRISON MONUMENT ON TOP. STONE SET BY M.C. SMITH 1913 VOL.1 PG 172.

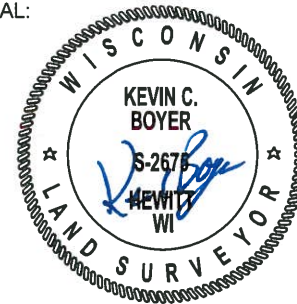
2020 - PLS 2675 FOUND HARRISON MONUMENT 4"± BELOW ROAD SURFACE AND 1 TIE. THE MONUMENT AGREES WITH THE TIE. ACCEPTED THE HARRISON MONUMENT AS THE CORNER LOCATION. SET 3 NEW TIES AND MEASURED TO THE EXISTING TIE.



LOCATION

(INDICATE CORNER BY "X")

SEAL:



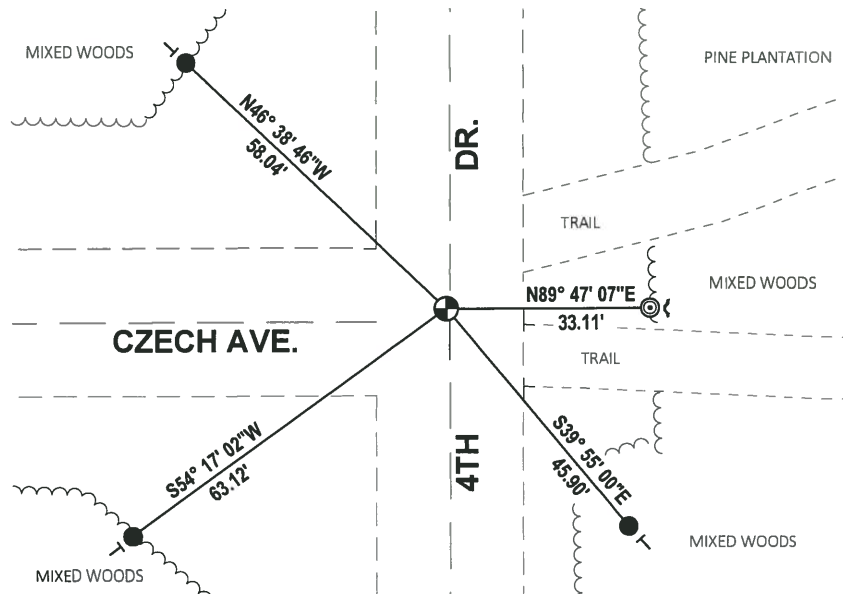
DATA SHOWN HERE ON THIS TIE SHEET IS CORRECT AND COMPLETE TO THE BEST OF MY KNOWLEDGE AND BELIEF.

PROFESSIONAL LAND SURVEYOR

DATE 3/9/2020

TIE SKETCH

NOTE: THE CORNER LANDS 0.5'± WEST OF 4TH DR. CENTERLINE



- SET 3/4" x 18" IRON REBAR, 1.50#/FT
- ◎ FOUND 2-3/8" O.D. IRON PIPE
- ⊕ FOUND HARRISON MONUMENT
- ┘ STEEL FENCE POST
- | VINYL "T" POST

ADAMS COUNTY

Survey Monument Record

TYPE OF MONUMENT: Harrison standard

STATE PLANE COORDINATES: N _____

E _____

ELEVATION — M.S.L. DATUM: _____

THETA ANGLE: _____

FIELD BOOK: _____ PAGE _____

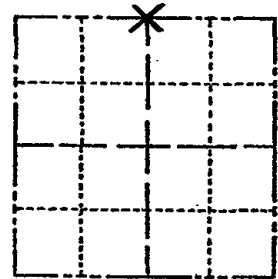
CORNER NO. 397

SECTION 33

TOWN 18

RANGE 7

106



LOCATION
(Indicated by 'X')

SEAL:

BASIS FOR MONUMENT LOCATION

(Use reverse side if necessary)

Show info such as: History of corner, with reference to Vol. and pg. dates, surveyor; exact description of monument replaced; if location computed, by taped or EDM traverse; landowner remarks, etc.

Excavated with backhoe and found
6" x 8" x 16" sandstone.
Lowered stone and set Harrison on top.

Stone by M.C. Smith 1913
Vol 1 pg 172



CORNER O.K. 3-14-77 GR-SS
" " 3-26-82 GR-SS
" " 2-10-87 SS
" " 11-22-91 KZ

CERTIFIED CORRECT:

COR O.K. 2-17-97 JG-SS *Anthony B. Kiedrowski*
" O2 1-03-02 GR Registered Land Surveyor
OK, 3-23-07-JG-SS DATE: 6/3/74

TIE SKETCH

(Show at least four ties)

