

27 SECTION 18 TOWN 07 RANGE

ADAMS COUNTY

COUNTY CORNER NO: 109
 ROMPORTOL ID: 41807270000

PUBLIC LAND SURVEY MONUMENT RECORD

TYPE OF MONUMENT: HARRISON
 ADAMS COUNTY COORDINATES, NAD 83 (2007)

N. 229835.374

E. 578212.431

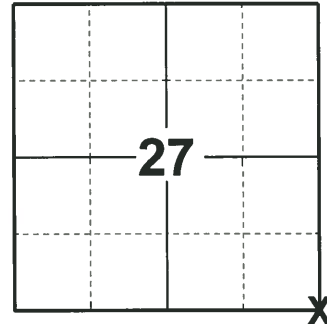
ELEVATION- - - - DATUM - - - -

FIELD WORK DATE: 02/06/2020

BASIS FOR MONUMENT LOCATION

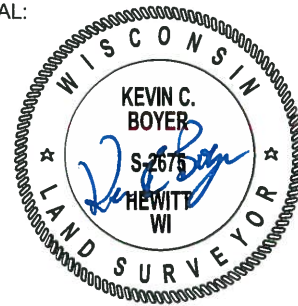
1981 - PLS 878 EXCAVATED WITH BACKHOE. FOUND 8X8X12" SANDSTONE. LOWERED STONE AND SET HARRISON MONUMENT ON TOP. NO RECORD OF STONE.

2020 - PLS 2675 FOUND HARRISON MONUMENT 18"± BELOW THE ROAD SURFACE AND 1 TIE. THE MONUMENT AGREES WITH THE TIE. ACCEPTED THE HARRISON MONUMENT AS THE CORNER LOCATION. SET 3 NEW TIES AND MEASURED TO THE EXISTING TIE.



LOCATION
 (INDICATE CORNER BY "X")

SEAL:



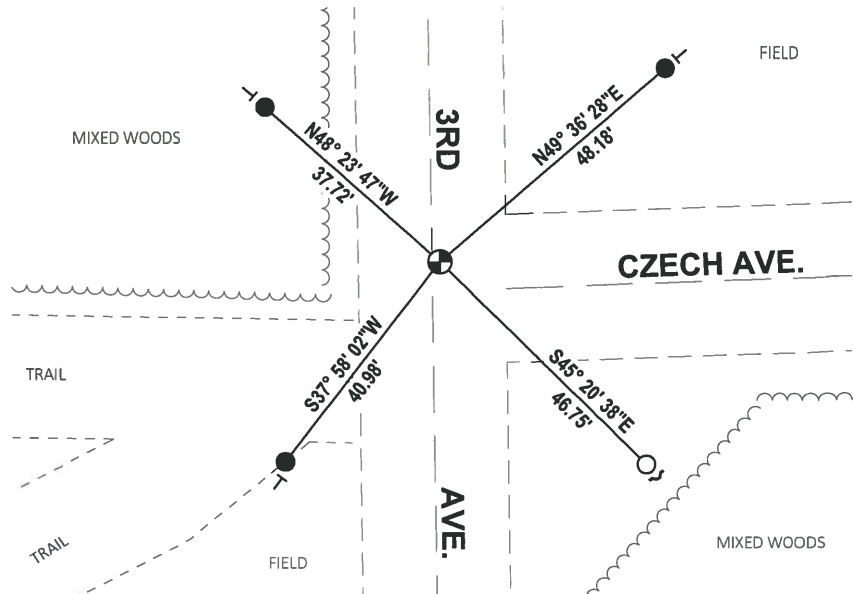
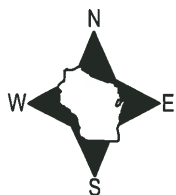
DATA SHOWN HERE ON THIS TIE SHEET IS CORRECT AND COMPLETE TO THE BEST OF MY KNOWLEDGE AND BELIEF.

PROFESSIONAL LAND SURVEYOR

DATE 3/9/2020

- TIE SKETCH

NOTE: THE CORNER LANDS 1± EAST OF 3RD AVE. CENTERLINE.

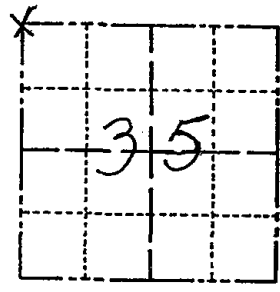


- SET 3/4" x 18" IRON REBAR, 1.50#/FT
- FOUND 3/4" IRON ROD
- ⊙ FOUND HARRISON MONUMENT
- ┌ STEEL FENCE POST
- └ VINYL "T" POST

Government Land Corner Certificate

ADAMS County
 TYPE OF MONUMENT: HARRISON
 STATE PLANE COORDINATES: N _____
 E _____
 ELEVATION — M.S.L. DATUM: _____
 THETA ANGLE: _____
 FIELD BOOK: 88 PAGE 32
 DRAWN BY: N.J.

CORNER NO. 109
 SECTION 35
 TOWN 18
 RANGE 7



LOCATION
(Indicated by 'X')

BASIS FOR MONUMENT LOCATION

Show info such as: History of corner, with reference to Vol. and pg., dates, surveyor; exact description of monument replaced; if location computed, by taped or EDM traverse; landowner remarks, etc. (Use reverse side if necessary)

Excavated with backhoe. Found 8x8x12" sandstone. Lowered stone and set Harrison monument on top. No record of stone.

SEAL:



DATA SHOWN HERE ON
CERTIFIED CORRECT:

Anthony B. Kiedrowski
Registered Land Surveyor

DATE: 8/31/81

TIE SKETCH

Show at least four ties, also fence lines, roads, topo, size and type of witness trees' and if off road - best way to arrive at corner.

