

26
SECTION

18
TOWN

07
RANGE

ADAMS COUNTY

COUNTY CORNER NO.: 110

ROMPORTOL ID: 41807260020

PUBLIC LAND SURVEY MONUMENT RECORD

TYPE OF MONUMENT: HARRISON
ADAMS COUNTY COORDINATES, NAD 83 (2007)

N. 229842.597

E. 580856.820

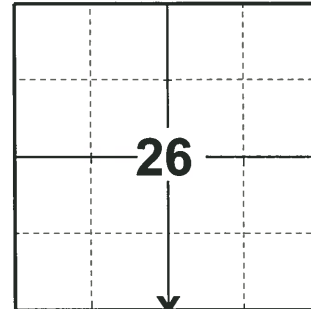
ELEVATION- - - - DATUM - - - -

FIELD WORK DATE: 02/06/2020

BASIS FOR MONUMENT LOCATION

1979 - PLS 878 EXCAVATED WITH BACKHOE. FOUND BOTTOM 12" OF 3" DIAMETER ROTTED WOOD POST. SET HARRISON MONUMENT AT THAT POINT. COULD FIND NO RECORD OF ANY RESURVEYS. LOCATION VERIFIED BY EDM TRAVERSE.

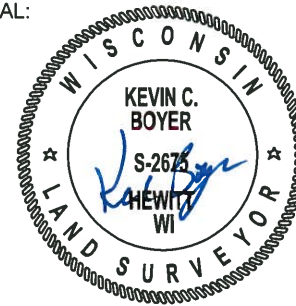
2020 - PLS 2675 FOUND A HARRISON MONUMENT 18"± BELOW THE ROAD SURFACE AND DID NOT RECOVER ANY TIES OR WITNESSES. ACCEPTED THE HARRISON AS THE CORNER LOCATION. SET 4 NEW TIES.



LOCATION

(INDICATE CORNER BY "X")

SEAL:



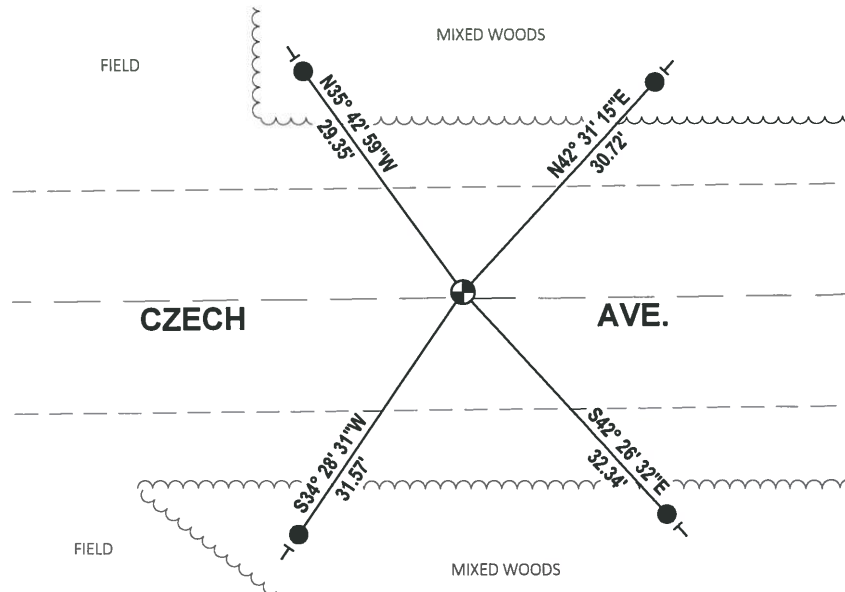
DATA SHOWN HERE ON THIS TIE SHEET IS CORRECT AND COMPLETE TO THE BEST OF MY KNOWLEDGE AND BELIEF.

PROFESSIONAL LAND SURVEYOR

DATE 3/9/2020

- TIE SKETCH

NOTE: THE CORNER LANDS 0.5± NORTH OF CZECH AVE.



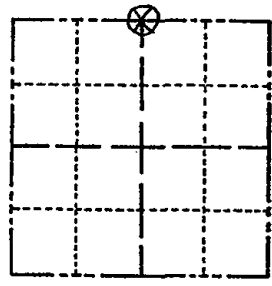
- SET 3/4" x 18" IRON REBAR, 1.50#/FT
- ⊕ FOUND HARRISON MONUMENT
- VINYL "T" POST

Government Land Corner Certificate

ADAMS County

CORNER NO. 110
 SECTION 35
 TOWN 18
 RANGE 7

TYPE OF MONUMENT: STANDARD HARRISON
 STATE PLANE COORDINATES: N _____
 E _____
 ELEVATION — M.S.L. DATUM: _____
 THETA ANGLE: _____
 FIELD BOOK: 102 (DIGGING) PAGE 39
 DRAWN BY: PAUL KIEDROWSKI



LOCATION
(Indicated by 'X')

BASIS FOR MONUMENT LOCATION

Show info such as: History of corner, with reference to Vol. and pg., dates, surveyor; exact description of monument replaced; if location computed, by taped or EDM traverse; landowner remarks, etc. (Use reverse side if necessary)

Excavated with backhoe. Found bottom 12" of 3" dia rotted wood post. Set Harrison monument at that point. Could find no record of any resurveys. Location verified by EDM traverse.

SEAL:



DATA SHOWN HERE ON
CERTIFIED CORRECT:

Anthony B. Kiedrowski
Registered Land Surveyor

DATE: 8/2/79

TIE SKETCH

Show at least four ties, also fence lines, roads, topo, size and type of witness trees and if off road - best way to arrive at corner.

