

26
SECTION

18
TOWN

07
RANGE

ADAMS COUNTY

COUNTY CORNER NO: 111

ROMPORTOL ID: 41807260000

PUBLIC LAND SURVEY MONUMENT RECORD

TYPE OF MONUMENT: HARRISON
ADAMS COUNTY COORDINATES, NAD 83 (2007)

N. 229843.303

E. 583501.289

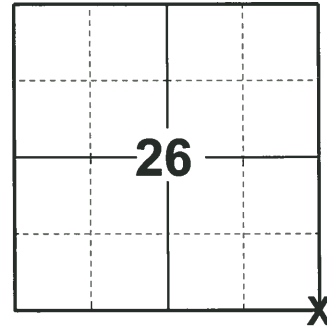
ELEVATION- - - - DATUM - - - -

FIELD WORK DATE: 02/05/2020

BASIS FOR MONUMENT LOCATION

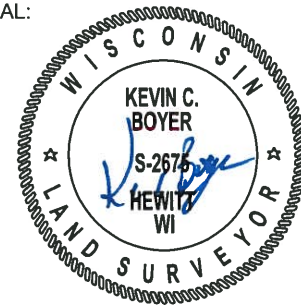
1981 - PLS 878 EXCAVATED 8'X10' HOLE AT CENTERLINE-CENTERLINE OF ROADS, FOUND NOTHING. RETURNED LATER TO EXCAVATE ANOTHER 3'X8' AREA NORTH OF AND ADJACENT TO THE FIRST HOLE, AGAIN FOUND NOTHING. NO RECORD OF RESURVEYS. THE NORTH-SOUTH LOCATION OF THIS CORNER IS SET BY PROPORTIONAL DISTANCES BETWEEN THE SW CORNER OF SECTION 36 AND THE NW CORNER OF SECTION 24. THE EAST-WEST LOCATION DETERMINED BY DOUBLING THE DISTANCE BETWEEN SECTION MONUMENTS AT THE SW AND S1/4 CORNERS OF SECTION 26, BEING A STONE AND POST.

2020 - PLS 2675 FOUND HARRISON MONUMENT 6"± BELOW THE ROAD SURFACE AND 2 WITNESSES. THE MONUMENT AGREES WITH THE BOTH WITNESSES. ACCEPTED THE HARRISON MONUMENT AS THE CORNER LOCATION. SET 4 NEW TIES AND MEASURED TO THE WITNESSES.



LOCATION
(INDICATE CORNER BY "X")

SEAL:



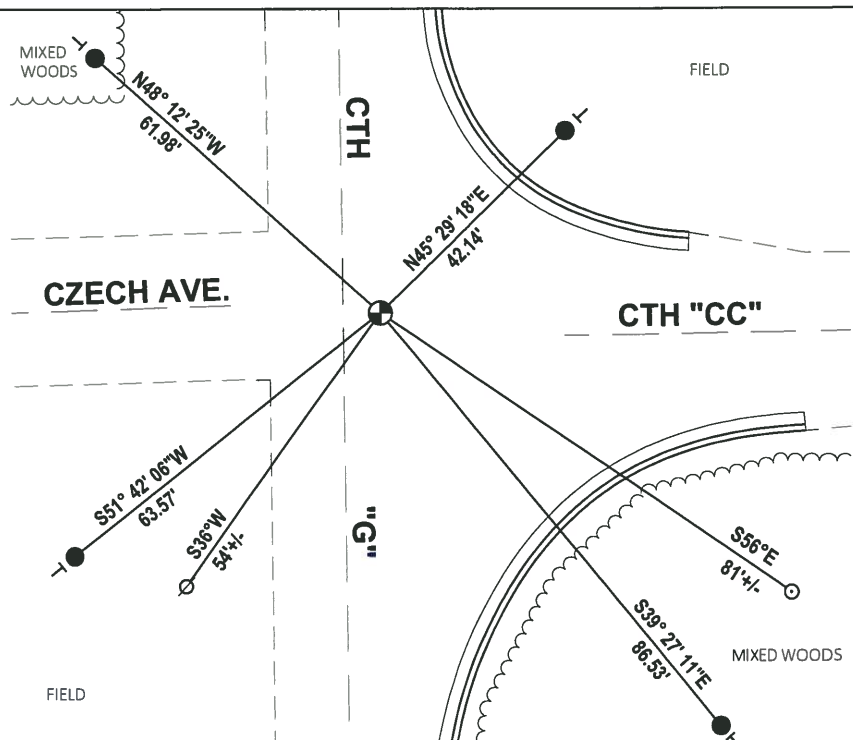
DATA SHOWN HERE ON THIS TIE SHEET IS CORRECT AND COMPLETE TO THE BEST OF MY KNOWLEDGE AND BELIEF.

PROFESSIONAL LAND SURVEYOR

DATE 3/9/2020

TIE SKETCH

NOTE: THE CORNER LANDS 6"± EAST OF CTH "G" CENTERLINE

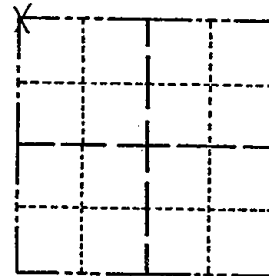


- SET 3/4" x 18" IRON REBAR, 1.50#/FT
- ⊕ FOUND HARRISON MONUMENT
- ⊙ WITNESS POWER POLE
- 6" WOOD POST
- VINYL "T" POST

Government Land Corner Certificate

ADAMS County
 TYPE OF MONUMENT: HARRISON
 STATE PLANE COORDINATES: N _____
 E _____
 ELEVATION — M.S.L. DATUM: _____
 THETA ANGLE: _____
 FIELD BOOK: 88 PAGE 64
 DRAWN BY: L. COOMBS

CORNER NO. 111
 SECTION 36
 TOWN 18
 RANGE 7



LOCATION
(Indicated by 'X')

BASIS FOR MONUMENT LOCATION

Show info such as: History of corner, with reference to Vol. and pg., dates, surveyor; exact description of monument replaced; if location computed, by taped or EDM traverse; landowner remarks, etc. (Use reverse side if necessary)

Excavated 8'x10' hole at centerline-centerline of roads, found nothing. Returned later to excavate another 3'x8' area North of and adjacent to the first hole, again found nothing. No record of any resurveys. The North-South location of this corner is set by proportional distances between the SW corner of Section 36 and the NW corner of Section 24. The East-West location determined by doubling the distance between Section monuments at the SW and S $\frac{1}{4}$ corners of Section 26, being a stone and post.

SEAL:



DATA SHOWN HERE ON
CERTIFIED CORRECT:

Anthony B. Kiedrowski
Registered Land Surveyor

DATE: 10/7/81

TIE SKETCH

Show at least four ties, also fence lines, roads, topo, size and type of witness trees and if off road - best way to arrive at corner.

