

25
SECTION

18
TOWN

07
RANGE

ADAMS COUNTY

COUNTY CORNER NO: 112

ROMPORTOL ID: 41807250020

PUBLIC LAND SURVEY MONUMENT RECORD

TYPE OF MONUMENT: SURVEY NAIL
ADAMS COUNTY COORDINATES, NAD 83 (2007)

N. 229877.164

E. 586151.138

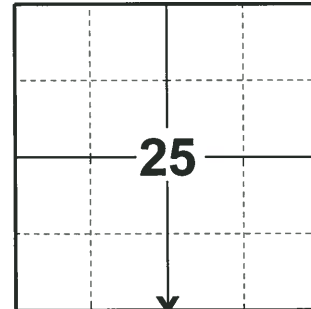
ELEVATION- - - - - DATUM - - - - -

FIELD WORK DATE: 02/05/2020

BASIS FOR MONUMENT LOCATION

1981 - PLS 878 NO RECORD OF RESURVEY. DID NOT EXCAVATE SINCE SEARCH AREA FALLS IN DITCH AREA. CORNER SET ON LINE AND EQUIDISTANT BETWEEN SECTION CORNERS.

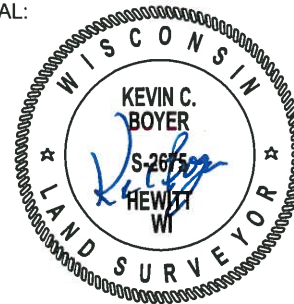
2020 - PLS 2675 FOUND MAGNAIL IN ROAD SURFACE AND 2 WITNESSES. REMOVED MAGNAIL, FOUND NO OTHER EVIDENCE OF ANY OTHER MONUMENT BELOW. THE MAGNAIL POSITION AGREES WITH BOTH WITNESSES AND IS ON A NEAR STRAIGHT LINE BETWEEN THE SE AND SW CORNERS OF SECTION 25 AND EQUIDISTANT SPLIT. ACCEPTED THE MAGNAIL POSITION AS THE CORNER LOCATION. SET A SURVEY NAIL IN THE MAGNAIL POSITION. SET 4 NEW TIES AND MEASURED TO THE EXISTING WITNESSES.



LOCATION

(INDICATE CORNER BY "X")

SEAL:



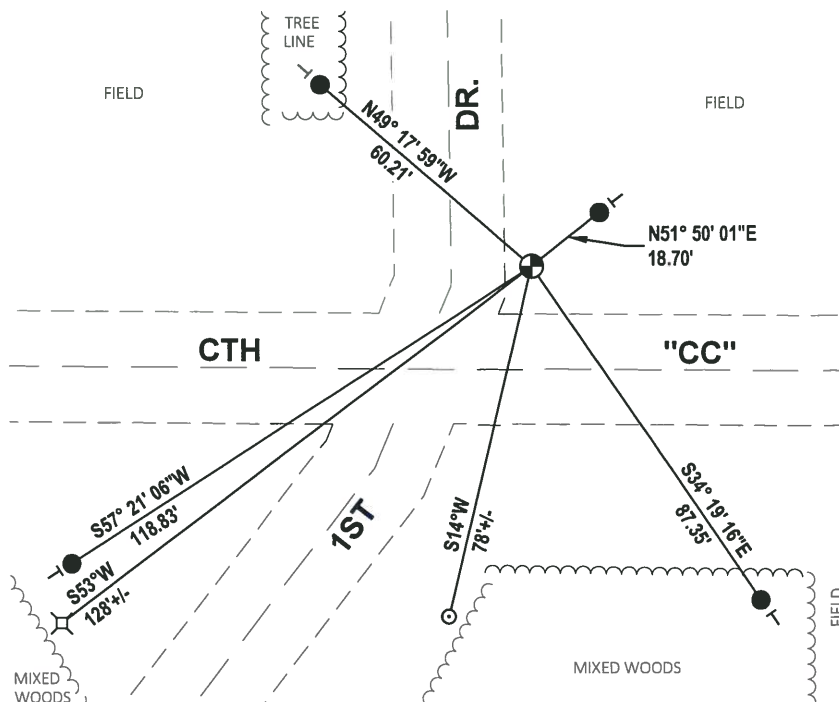
DATA SHOWN HERE ON THIS TIE SHEET IS CORRECT AND COMPLETE TO THE BEST OF MY KNOWLEDGE AND BELIEF.

PROFESSIONAL LAND SURVEYOR

DATE 3/9/2020

- TIE SKETCH

NOTE: THE CORNER LANDS 22± NORTH OF CTH "CC" CENTERLINE AND 18'± EAST OF 1ST DR CENTERLINE

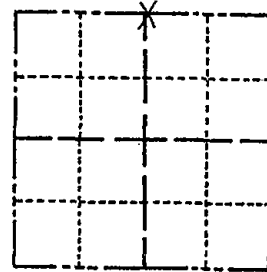


- SET 3/4" x 18" IRON REBAR, 1.50#/FT
- ⊕ FOUND SURVEY NAIL MONUMENT
- ⊗ NW CORNER OF ELEC. PED.
- GUY POLE
- ┆ VINYL "T" POST

Government Land Corner Certificate

ADAMS County
 TYPE OF MONUMENT: HARRISON FD PK NAIL 02-28-12
 STATE PLANE COORDINATES: N _____
 E _____
 ELEVATION — M.S.L. DATUM: _____
 THETA ANGLE: _____
 FIELD BOOK: 88 PAGE 66
 DRAWN BY: L. COOMBS

CORNER NO. 112
 SECTION 36
 TOWN 18
 RANGE 7



LOCATION
(Indicated by 'X')

BASIS FOR MONUMENT LOCATION

Show info such as: History of corner, with reference to Vol. and pg., dates, surveyor; exact description of monument replaced; if location computed, by taped or EDM traverse; landowner remarks, etc. (Use reverse side if necessary)

No record of resurveys. Did not excavate since search area falls in ditch area. Corner set on line and equidistant between Section corners.

SEAL:



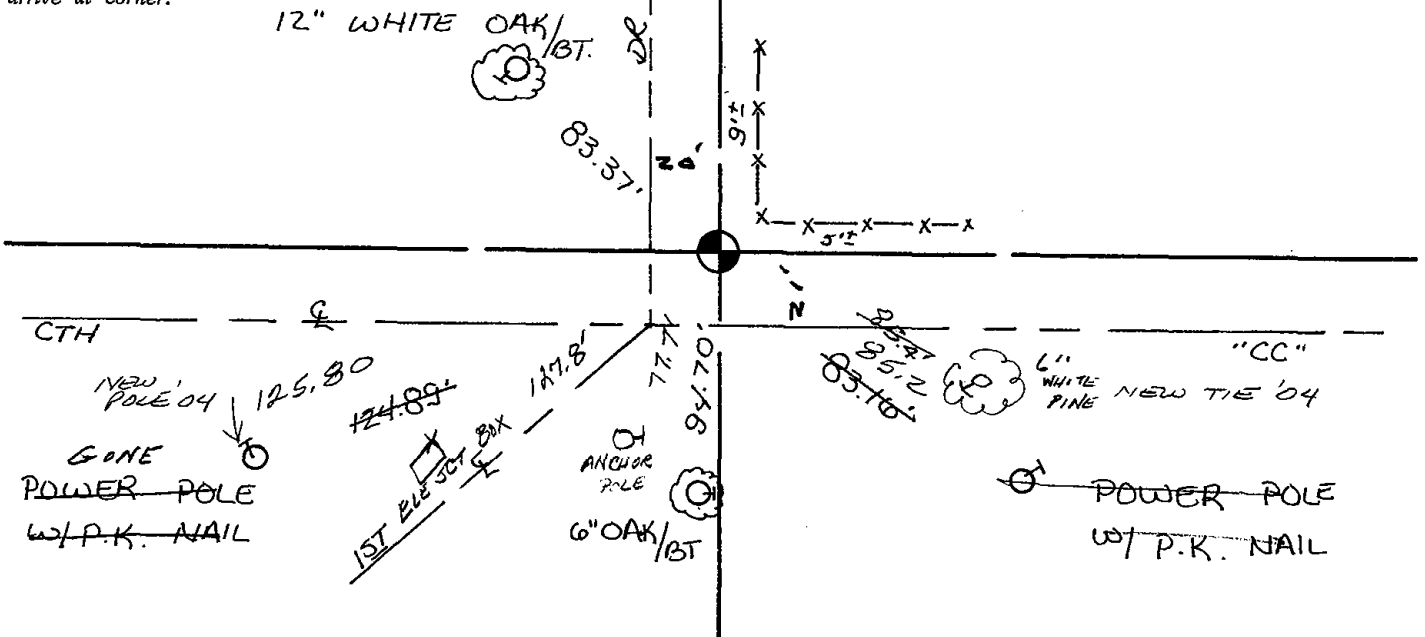
DATA SHOWN HERE ON
CERTIFIED CORRECT:

Anthony B. Kiedrowski
Registered Land Surveyor

DATE: 10/7/81

TIE SKETCH

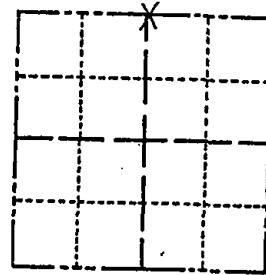
Show at least four ties, also fence lines, roads, topo, size and type of witness trees' and if off road - best way to arrive at corner.



Government Land Corner Certificate

ADAMS County
 TYPE OF MONUMENT: HARRISON RR SPIKE PK NAIL
 STATE PLANE COORDINATES: N _____
 E _____
 ELEVATION — M.S.L. DATUM: _____
 THETA ANGLE: _____
 FIELD BOOK: 88 PAGE 66
 DRAWN BY: L. COOMBS

CORNER NO. 112
 SECTION 36
 TOWN 18
 RANGE 7



LOCATION
(Indicated by 'X')

BASIS FOR MONUMENT LOCATION

Show info such as: History of corner, with reference to Vol. and pg., dates, surveyor; exact description of monument replaced; if location computed, by taped or EDM traverse; landowner remarks, etc. (Use reverse side if necessary)

No record of resurveys. Did not excavate since search area falls in ditch area. Corner set on line and equidistant between Section corners.

4-10-07, TIES ARE OK - RR SPIKE SET AUG '08

SEAL:



DATA SHOWN HERE ON CERTIFIED CORRECT:

Anthony B. Kiedrowski
Registered Land Surveyor

DATE: 10/7/81

TIE SKETCH

Show at least four ties, also fence lines, roads, topo, size and type of witness trees and if off road - best way to arrive at corner.

