

## PUBLIC LAND SURVEY MONUMENT RECORD

TYPE OF MONUMENT: SURVEY NAIL (SET)  
 ADAMS COUNTY COORDINATES, NAD 83 (2007)

N. 229910.935  
 E. 588801.247

ELEVATION-      DATUM     

FIELD WORK DATE: 1/11/2017

### BASIS FOR MONUMENT LOCATION

1981 - PLS 878 EXCAVATED AND FOUND A 10" X 12" X 10" PYRAMID SHAPED SANDSTONE (CALLED FOR PER WAUSHARA COUNTY TIE SHEET) BADLY BROKEN, 3 EXISTING TIES AND 2 EXISTING WITNESSES. PLACED A HARRISON OVERTOP OF STONE.

2004 - REMOVED HARRISON FOR HIGHWAY WORK. REMEASURED TO 3 EXISTING TIES AND SET 1 NEW WITNESS.

2017 - PLS 2994 FOUND A MAGNAIL IN ROAD SURFACE, 3 EXISTING TIES AND 1 EXISTING WITNESS. REMOVED MAGNAIL TO SEARCH FOR ADDITIONAL MONUMENTS BELOW, FOUND NOTHING. USED EXISTING TIES TO CHECK MAGNAIL LOCATION. ACCEPTED LOCATION AND SET A SURVEY NAIL TO REPLACE MAGNAIL. REMEASURED TO THE EXISTING TIES AND WITNESS AND SET 1 NEW TIE.



LOCATION  
(INDICATE CORNER BY "X")

SEAL:



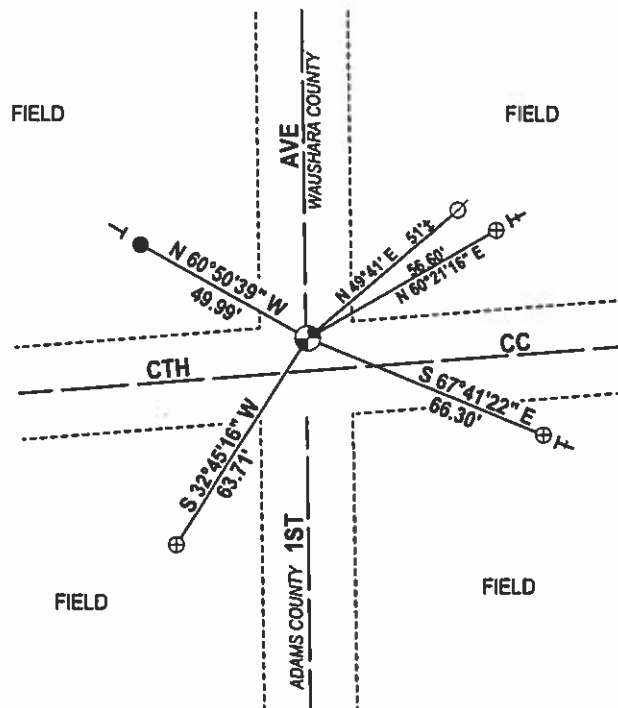
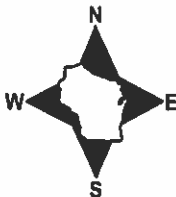
DATA SHOWN HERE ON THIS TIE SHEET IS CORRECT AND COMPLETE TO THE BEST OF MY KNOWLEDGE AND BELIEF.

PROFESSIONAL LAND SURVEYOR

DATE 3/15/17

### - TIE SKETCH

NOTE: THE CORNER FALLS 1'± EAST OF THE CENTERLINE OF 1ST AVE AND 9'± NORTH OF THE CENTERLINE OF CTH CC.

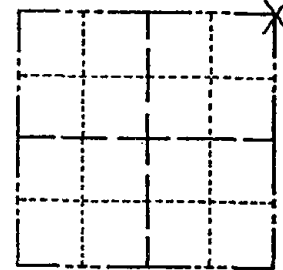


- 3/4" x 18" IRON REBAR SET, 1.50#/FT
- ⊕ 2" OD IRON PIPE WITH CAP FOUND
- ⊗ NAIL IN POWER POLE FOUND
- ⊕ HARRISON FOUND
- | VINYL "T" POST
- +| STEEL FENCE POST

Government Land Corner Certificate

ADAMS County  
 TYPE OF MONUMENT: HARRISON  
 STATE PLANE COORDINATES: N \_\_\_\_\_  
 E \_\_\_\_\_  
 ELEVATION — M.S.L. DATUM: \_\_\_\_\_  
 THETA ANGLE: \_\_\_\_\_  
 FIELD BOOK: 88 PAGE 63  
 DRAWN BY: L. Coombs

CORNER NO. 113  
 SECTION 36  
 TOWN 18  
 RANGE 7



LOCATION  
(Indicated by 'X')

BASIS FOR MONUMENT LOCATION

Show info such as: History of corner, with reference to Vol. and pg., dates, surveyor; exact description of monument replaced; if location computed, by taped or EDM traverse; landowner remarks, etc. (Use reverse side if necessary)

Excavated 10'x10' hole, found 10"x12"x10" iron pyramid shaped sandstone badly broken. Replaced stone and set Harrison on top. Stone called for in Waushara County records.

SEAL:



DATA SHOWN HERE ON  
CERTIFIED CORRECT:

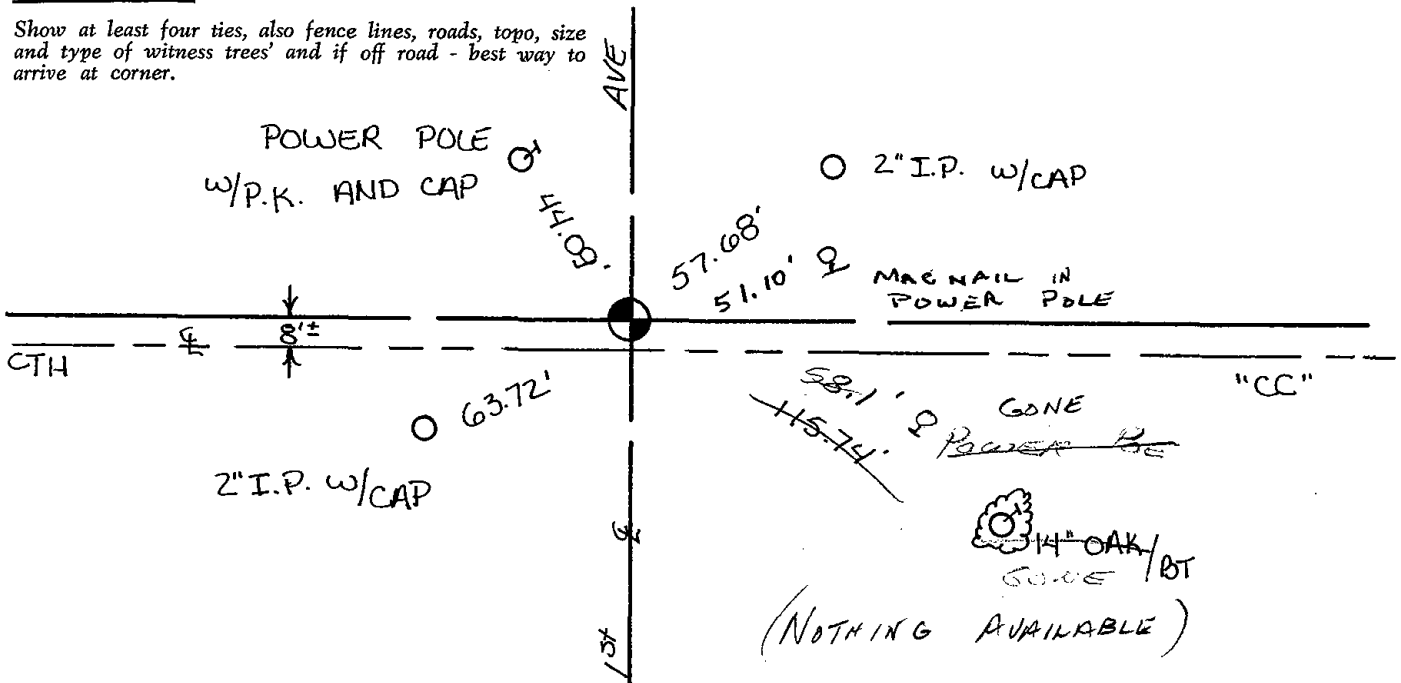
Anthony B. Kiedrowski  
Registered Land Surveyor

DATE: 10/7/81

OK 5-24-82 PK-SS  
 1 NEW TIE 2-20-87 SS  
 12-4-91 KZ JG, OK  
 2-17-97 OK JG-SS  
 1-14-02 1-NEW TIE JG

TIE SKETCH

Show at least four ties, also fence lines, roads, topo, size and type of witness trees and if off road - best way to arrive at corner.





# Government Land Corner Certificate

ADAMS County

TYPE OF MONUMENT: \_\_\_\_\_

STATE PLANE COORDINATES: N \_\_\_\_\_  
E \_\_\_\_\_

ELEVATION — M.S.L. DATUM: \_\_\_\_\_

THETA ANGLE: \_\_\_\_\_

FIELD BOOK: \_\_\_\_\_ PAGE \_\_\_\_\_

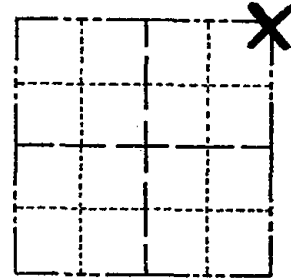
DRAWN BY: S.J. Haumschild

CORNER NO. 113

SECTION 36

TOWN 18

RANGE 7



LOCATION  
(Indicated by 'X')

## BASIS FOR MONUMENT LOCATION

Show info such as: History of corner, with reference to Vol. and pg., dates, surveyor; exact description of monument replaced; if location computed, by taped or EDM traverse; landowner remarks, etc. (Use reverse side if necessary)

SEAL:

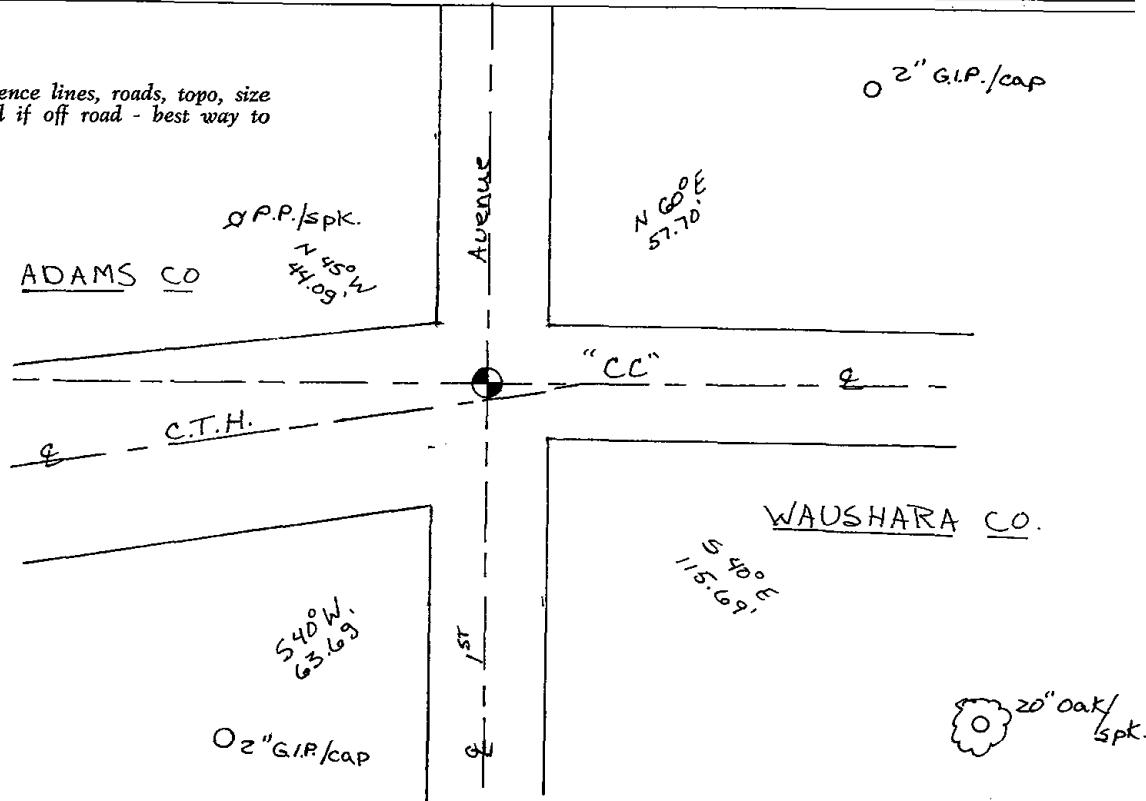
DATA SHOWN HERE ON  
CERTIFIED CORRECT:

Registered Land Surveyor

DATE: \_\_\_\_\_

## TIE SKETCH

Show at least four ties, also fence lines, roads, topo, size and type of witness trees and if off road - best way to arrive at corner.

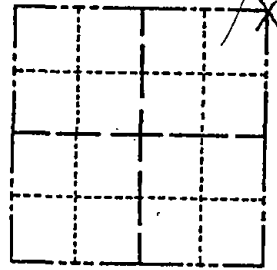




# Government Land Corner Certificate

ADAMS County  
 TYPE OF MONUMENT: HARRISON RR SPIKE  
 STATE PLANE COORDINATES: N \_\_\_\_\_  
 E \_\_\_\_\_  
 ELEVATION — M.S.L. DATUM: \_\_\_\_\_  
 THETA ANGLE: \_\_\_\_\_  
 FIELD BOOK: 88 PAGE 63  
 DRAWN BY: L. Coombs

CORNER NO. 113  
 SECTION 36  
 TOWN 18  
 RANGE 7



LOCATION  
(Indicated by 'X')

## BASIS FOR MONUMENT LOCATION

Show info such as: History of corner, with reference to Vol. and pg., dates, surveyor; exact description of monument replaced; if location computed, by taped or EDM traverse; landowner remarks, etc. (Use reverse side if necessary)

Excavated 10'x10' hole, found 10"x12"x10" iron pyramid shaped sandstone badly broken. Replaced stone and set Harrison on top. Stone called for in Waushara County records.

SEAL:



DATA SHOWN HERE ON  
CERTIFIED CORRECT:

*Anthony B. Kiedrowski*  
Registered Land Surveyor

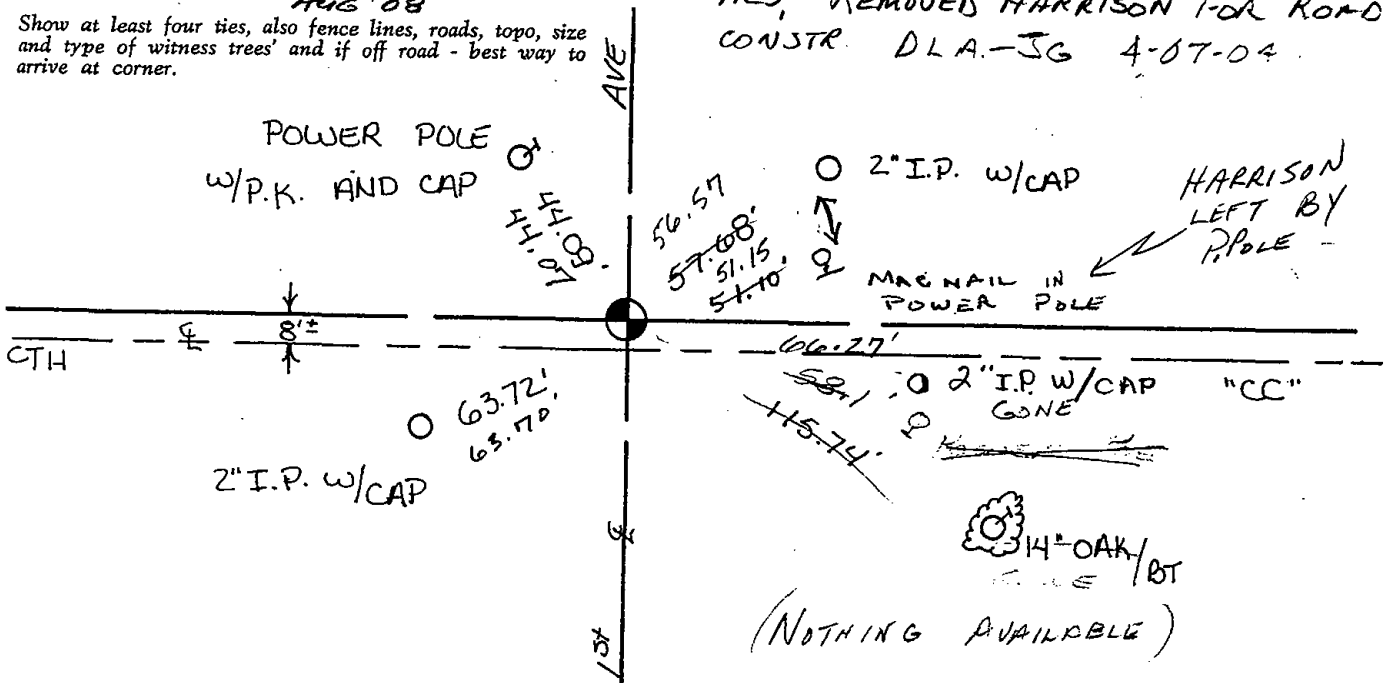
DATE: 10/7/81

- OK 2-24-82 PK-SS
- 1-NEW TIE 2-25-82 SS
- 12-4-91 KE JG, OK
- 2-17-97 OK JG-SS
- 1-14-02 1-NEW TIE JG

## TIE SKETCH SET RR SPIKE AUG '08

Show at least four ties, also fence lines, roads, topo, size and type of witness trees and if off road - best way to arrive at corner.

\* 1-NEW TIE, TOOK NEW DISTANCES TO OLD TIES, REMOVED HARRISON FOR ROAD CONSTR. D.L.A.-JG 4-07-04.



(NOTHING AVAILABLE)

**WAUSHARA COUNTY  
CERTIFIED LAND CORNER**

No. 113

Description of corner evidence found:

10" x 12" x 12" Stone

Witnesses to corner location:

Anthony Kiedrowski

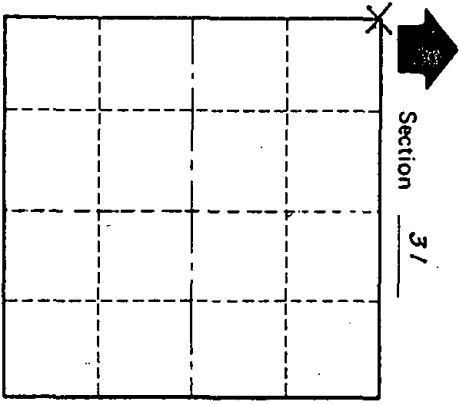
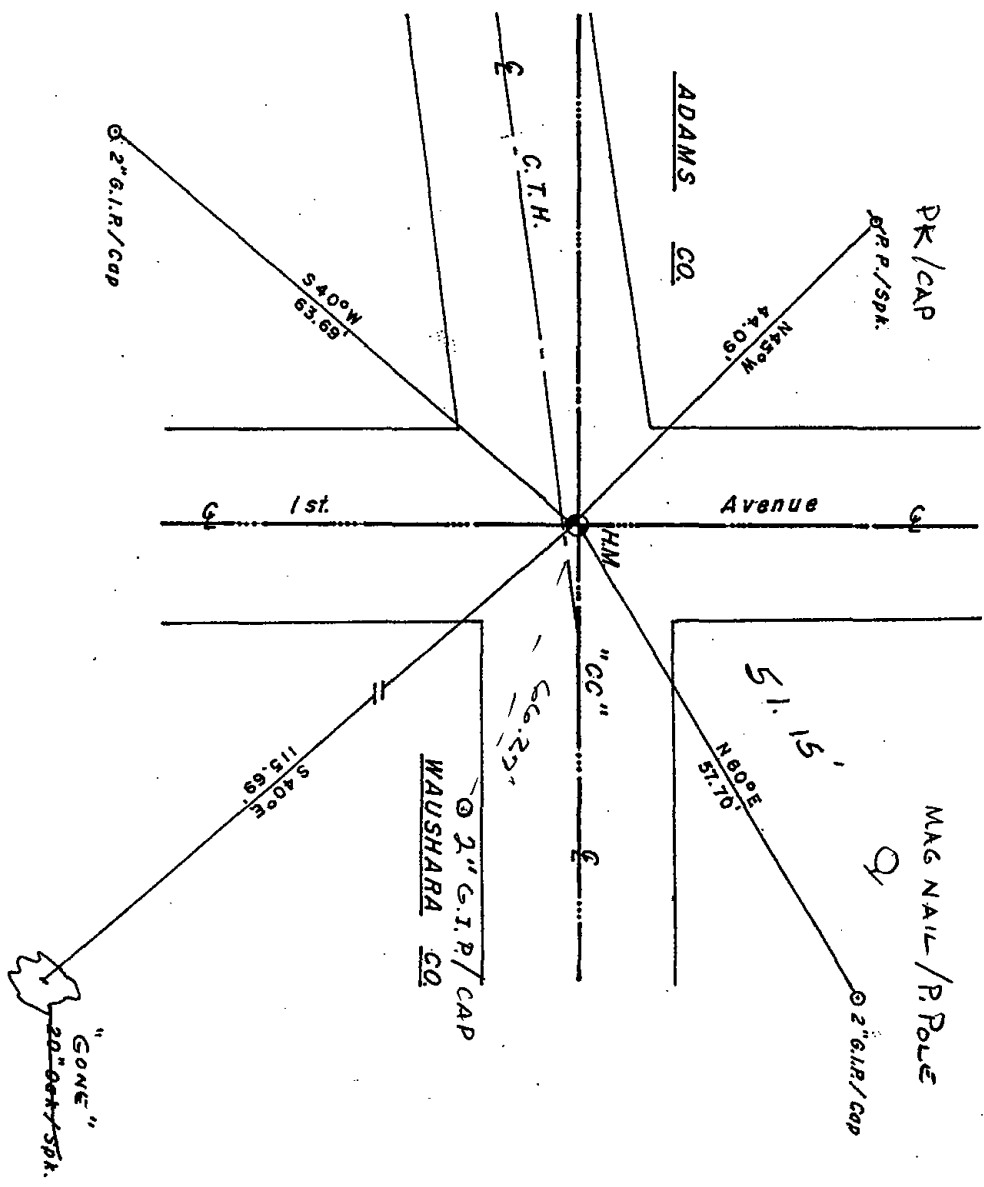
Steven Mack

I, do hereby  
day  
I found  
T 18 N,  
lian, and I re-  
to the Wis-  
ribed hereon.

of 19 81

ntly Surveyor

Stone



X = LOCATION CORNER  
T 18 N R 8 E  
WISCONSIN

WISCONSIN COORDINATE SYSTEM

(X)	North (Y)	Elevation (Z)	Zone

Approved By: \_\_\_\_\_

SEE BACK OF PAGE FOR  
MAINTENANCE RECORDS