

34  
SECTION

18  
TOWN

07  
RANGE

# ADAMS COUNTY

COUNTY CORNER NO: 118

ROMPORTOL ID: 41807342000

## PUBLIC LAND SURVEY MONUMENT RECORD

TYPE OF MONUMENT: HARRISON  
ADAMS COUNTY COORDINATES, NAD 83 (2007)

N. 227170.899

E. 578234.495

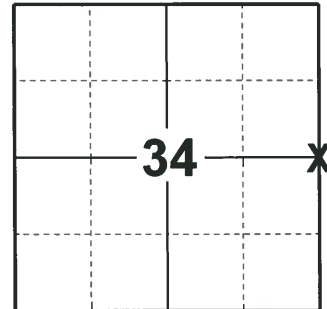
ELEVATION- - - - - DATUM - - - - -

FIELD WORK DATE: 02/06/2020

### BASIS FOR MONUMENT LOCATION

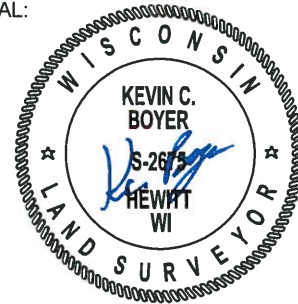
1979 - PLS 1478 SET HARRISON MONUMENT ON STRAIGHT LINE BETWEEN SECTION CORNERS AND OPPOSITE FENCE LINES. THIS LOCATION APPEARS TO BE THE SAME AS INDICATED BY M.C. SMITH IN SURVEYS TO THE EAST. EXCAVATION WITH BACKHOE YIELDED NO EVIDENCE OF ANY PREVIOUS MONUMENTATION.

2020 - PLS 2675 FOUND A HARRISON MONUMENT 16" BELOW THE ROAD SURFACE AND DID NOT RECOVER ANY TIES OR WITNESSES. THE MONUMENT IS ON A NEAR STRAIGHT LINE BETWEEN THE NE AND SE CORNERS. ACCEPTED THE HARRISON MONUMENT AS THE BEST EVIDENCE OF THE CORNER LOCATION. SET 4 NEW TIES.



**LOCATION**  
(INDICATE CORNER BY "X")

SEAL:



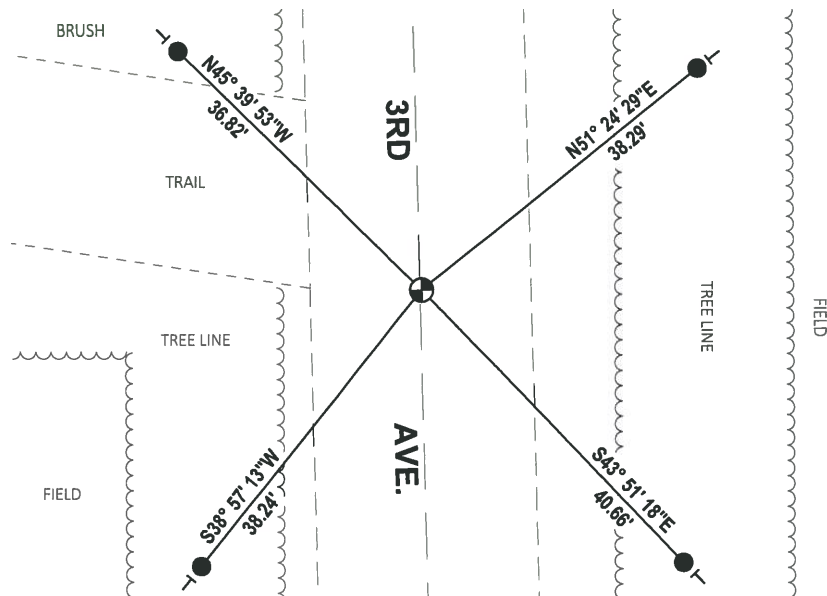
DATA SHOWN HERE ON THIS TIE SHEET IS CORRECT AND COMPLETE TO THE BEST OF MY KNOWLEDGE AND BELIEF.

PROFESSIONAL LAND SURVEYOR

DATE 3/9/2020

### - TIE SKETCH

NOTE: THE CORNER LANDS ON THE CENTERLINE OF 3RD AVE.



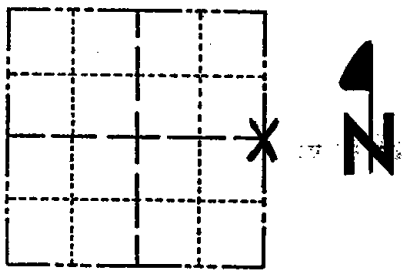
- SET 3/4" x 18" IRON REBAR, 1.50#/FT
- ⊕ FOUND HARRISON MONUMENT
- VINYL "T" POST

**ADAMS COUNTY**

**Survey Monument Record**

TYPE OF MONUMENT: HARRISON  
 STATE PLANE COORDINATES: N \_\_\_\_\_  
 E \_\_\_\_\_  
 ELEVATION — M.S.L. DATUM: \_\_\_\_\_  
 THETA ANGLE: \_\_\_\_\_  
 FIELD BOOK: 77 PAGE 45

CORNER NO. 118  
 SECTION 34  
 TOWN 18  
 RANGE 7



LOCATION  
(Indicated by 'X')

**BASIS FOR MONUMENT LOCATION**

(Use reverse side if necessary)

Show info such as: History of corner, with reference to Vol. and pg. dates, surveyor; exact description of monument replaced; if location computed, by taped or EDM traverse; landowner remarks, etc.

*straight line between sec. corners*

Set monument on ~~center~~ line and opposite fence lines. This location appears to be the same as indicated by M.C. Smith in surveys to the east. Excavation with backhoe yielded no evidence of any previous monumentation..

SEAL:



CORNER OK 5-21-82 PR-SS  
 NORWAY GONE 4 TIES REMAIN 2-18-87 SS  
 12-2-91 SS-JG OK  
 2-18-97 JG-SS OK  
 1-03-02 GR OK  
 4-10-07 JG OK  
 OK 03-18-12 MS-SS

CERTIFIED CORRECT:

*Gregory P Rhinehart*  
 Registered Land Surveyor

DATE: 9/4/79

**TIE SKETCH**

(Show at least four ties)

