

## PUBLIC LAND SURVEY MONUMENT RECORD

TYPE OF MONUMENT: HARRISON  
 ADAMS COUNTY COORDINATES, NAD 83 (2007)

N. 227259.943  
 E. 588821.681

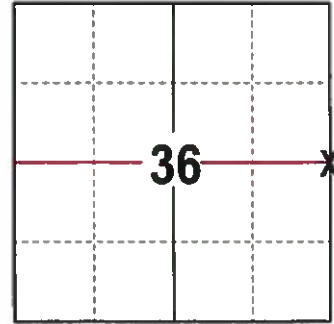
ELEVATION- --- DATUM ---

FIELD WORK DATE: 1/11/2017

### BASIS FOR MONUMENT LOCATION

1981 - PLS 878 EXCAVATED WITH BACKHOE AND FOUND A 6" X 6" X 24" SQUARE SANDSTONE MONUMENT 22" BELOW THE ROAD SURFACE. SET HARRISON OVERTOP OF THE STONE AND REMEASURED TO THE WITNESSES.

2017 - PLS 2994 FOUND A HARRISON 6 INCHES BELOW THE ROAD SURFACE AND 1 EXISTING WITNESS. THE HARRISON AGREES WITH EXISTING WITNESS. ACCEPTED HARRISON AND SET 4 NEW TIES.



LOCATION  
 (INDICATE CORNER BY "X")

SEAL:



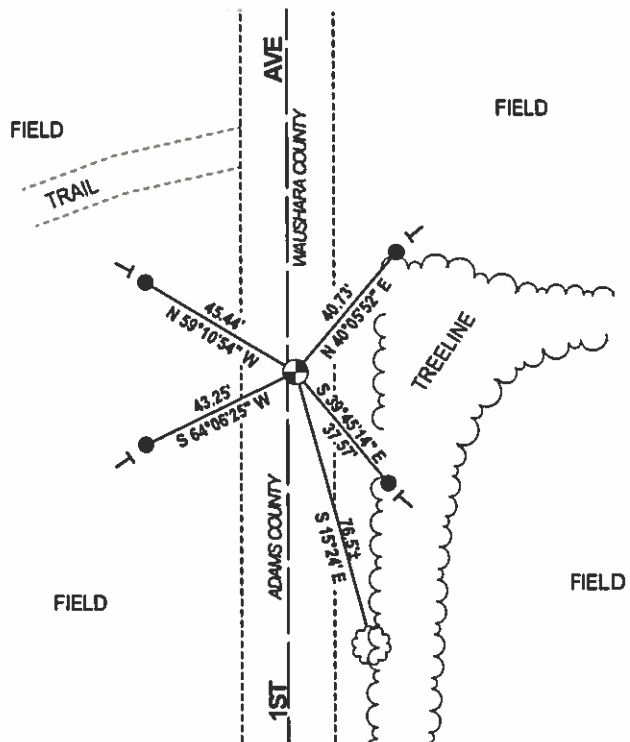
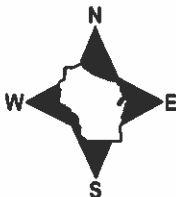
DATA SHOWN HERE ON THIS TIE SHEET IS CORRECT AND COMPLETE TO THE BEST OF MY KNOWLEDGE AND BELIEF.

PROFESSIONAL LAND SURVEYOR

DATE 3/15/17

### - TIE SKETCH

NOTE: THE CORNER FALLS 2'± EAST OF THE CENTERLINE OF 1ST AVE.

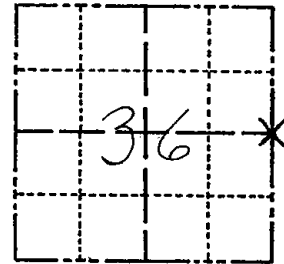


- 3/4" x 18" IRON REBAR SET, 1.50#/FT
- ⊙ HARRISON FOUND
- ┌ VINYL "T" POST
- ☼ WITNESS TREE FOUND

# Government Land Corner Certificate

ADAMS County  
 TYPE OF MONUMENT: HARRISON  
 STATE PLANE COORDINATES: N \_\_\_\_\_  
 E \_\_\_\_\_  
 ELEVATION — M.S.L. DATUM: \_\_\_\_\_  
 THETA ANGLE: \_\_\_\_\_  
 FIELD BOOK: 88 PAGE 62  
 DRAWN BY: N.J.

CORNER NO. 120  
 SECTION 36  
 TOWN 18  
 RANGE 7



## BASIS FOR MONUMENT LOCATION

Show info such as: History of corner, with reference to Vol. and pg., dates, surveyor; exact description of monument replaced; if location computed, by taped or EDM traverse; landowner remarks, etc. (Use reverse side if necessary)

Excavated with backhoe, found 6"x6"x24" squared sandstone down 22", left in place and set 20" Harrison Monument on top. Stone called for in Waushara County records.

LOCATION  
(Indicated by 'X')

SEAL:



DATA SHOWN HERE ON  
CERTIFIED CORRECT:

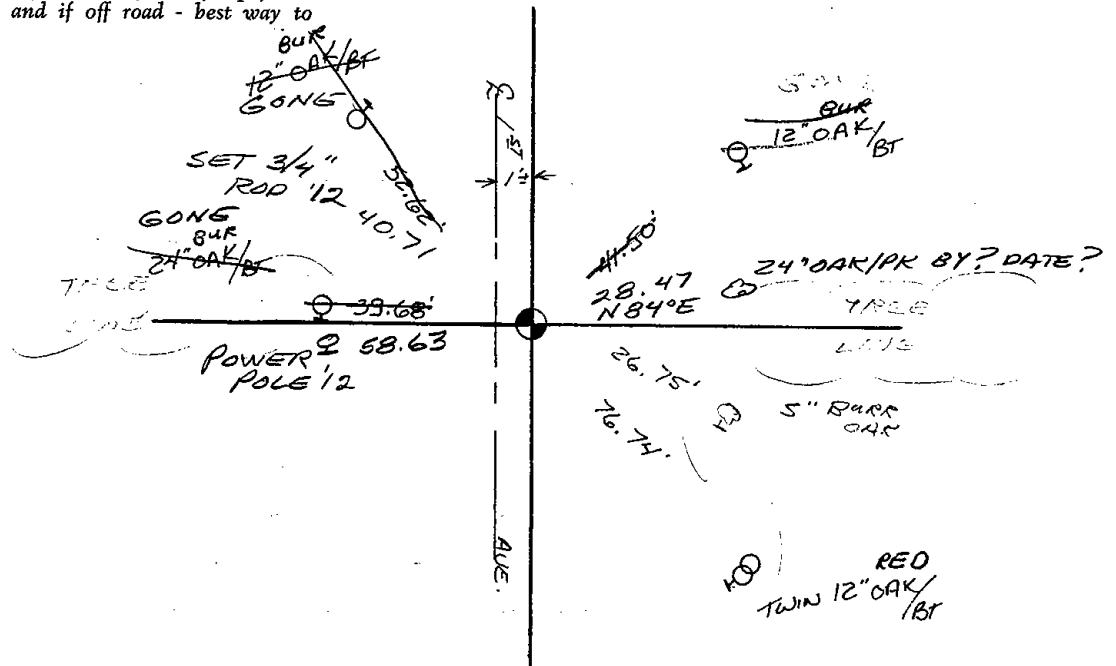
*Anthony B. Kiedrowski*  
Registered Land Surveyor

DATE: 10/7/81

CORNER O.K. 5-24-82 PK-SS  
 1 NEW TIE 2-20-87 SS  
 12-4-91 KZ-JG OK  
 2-17-97 JG-SS OK  
 1-14-02 JG-OK NOTE (NEW MAG NAIL IN SOME TREES)  
 4-10-07, JG-OK

## TIE SKETCH

Show at least four ties, also fence lines, roads, topo, size and type of witness trees and if off road - best way to arrive at corner.





STATE OF WISCONSIN  
WAUSHARA COUNTY

CERTIFIED LAND CORNER

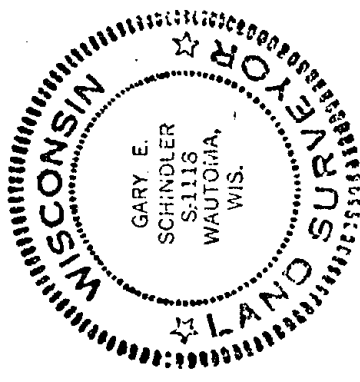
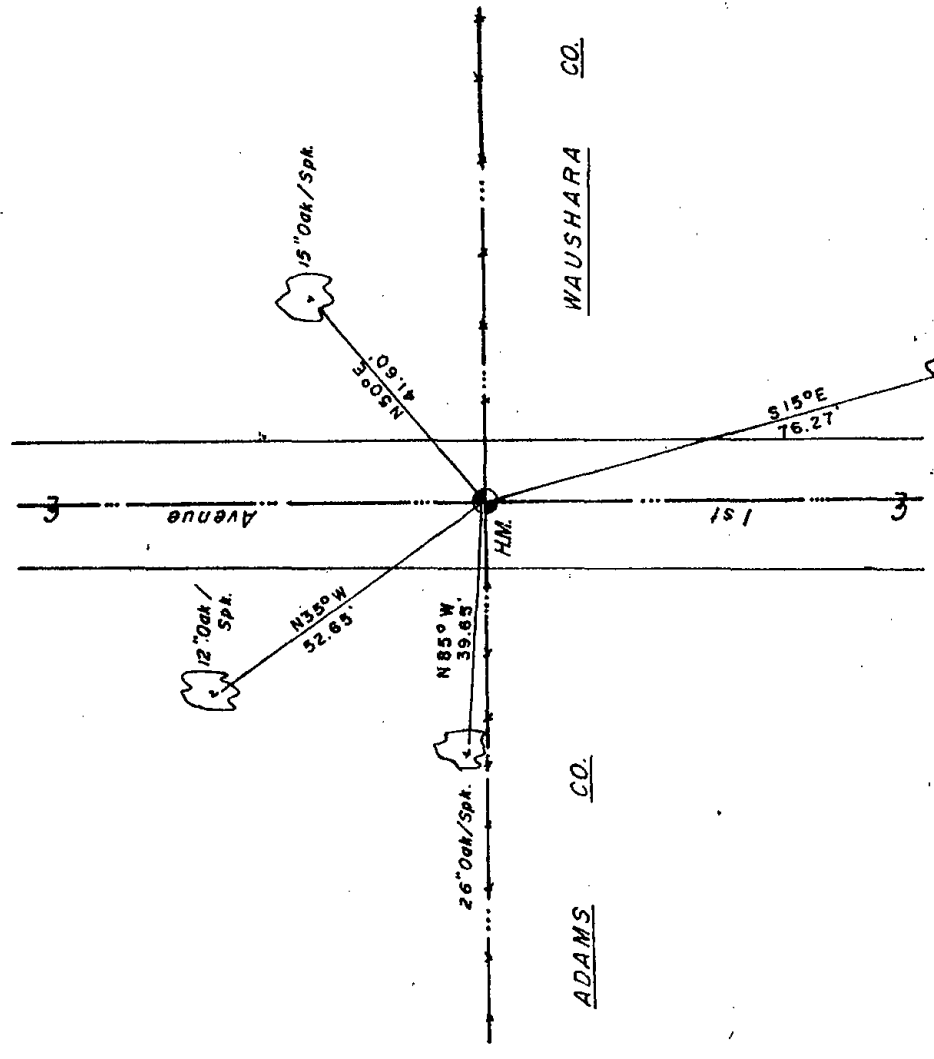
I, Gary E. Schindler, do hereby certify that on the 14<sup>th</sup> day of October 1981, I found (evidence) (no evidence) of the N1/4 corner of Sec 31, T18 N, R8 E, Fourth Principal Meridian, and I re-established said corner according to the Wisconsin Statutes as shown and described hereon.

Dated this 10<sup>th</sup> day of Oct 1981.  
Gary E. Schindler  
Waushara County Surveyor

We set H.M. over stone

Description of corner evidence found:

6" x 6" x 24" Stone Monument



#120  
36  
18  
7

ORDER	WISCONSIN COORDINATE SYSTEM	
	North (Y)	Elevation (Z)
	East (X)	Zone

SEE SECTION FILES FOR ORIGINAL COPY.

Approved By:

Wa

11/11/11



# Government Land Corner Certificate

ADAMS County

TYPE OF MONUMENT: \_\_\_\_\_

STATE PLANE COORDINATES: N \_\_\_\_\_  
E \_\_\_\_\_

ELEVATION — M.S.L. DATUM: \_\_\_\_\_

THETA ANGLE: \_\_\_\_\_

FIELD BOOK: \_\_\_\_\_ PAGE \_\_\_\_\_

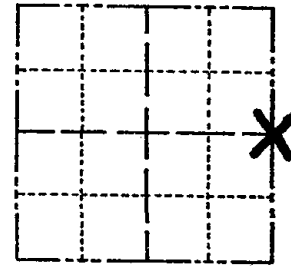
DRAWN BY: S.J. Haumschild

CORNER NO. 120

SECTION 36

TOWN 18

RANGE 7



LOCATION  
(Indicated by 'X')

## BASIS FOR MONUMENT LOCATION

Show info such as: History of corner, with reference to Vol. and pg., dates, surveyor; exact description of monument replaced; if location computed, by taped or EDM traverse; landowner remarks, etc. (Use reverse side if necessary)

SEAL:

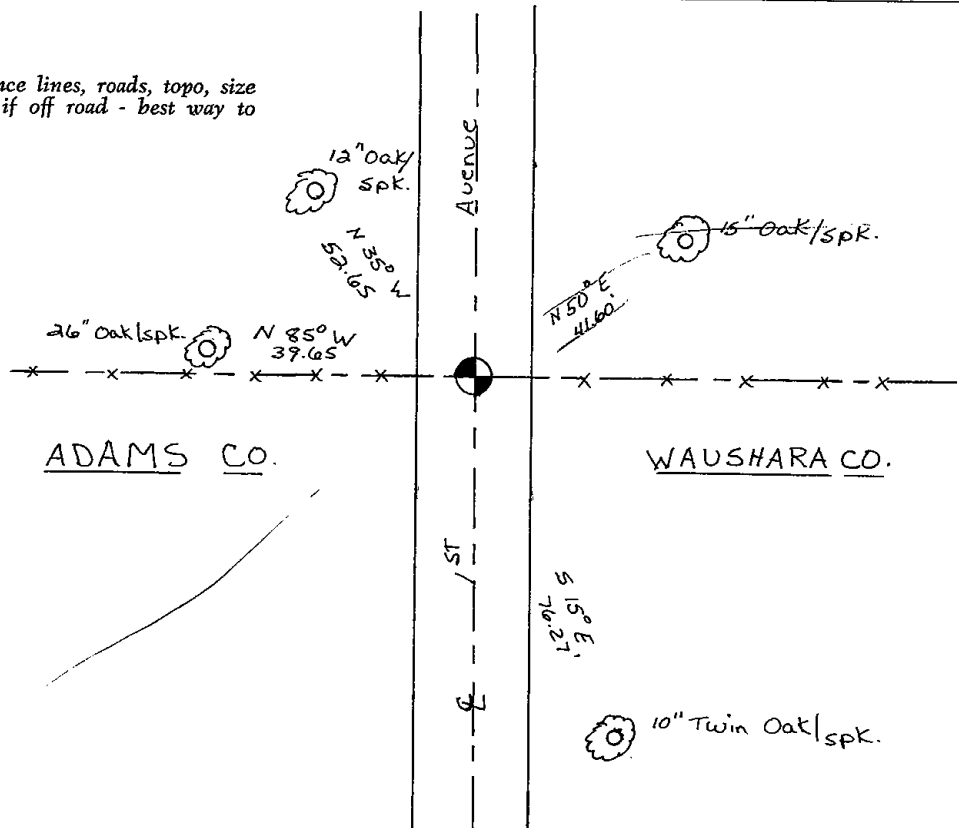
DATA SHOWN HERE ON  
CERTIFIED CORRECT:

Registered Land Surveyor

DATE: \_\_\_\_\_

## TIE SKETCH

Show at least four ties, also fence lines, roads, topo, size and type of witness trees and if off road - best way to arrive at corner.





## PUBLIC LAND SURVEY MONUMENT RECORD

TYPE OF MONUMENT: HARRISON  
 ADAMS COUNTY COORDINATES, NAD 83 (2007)

N. 227259.943  
 E. 588821.681

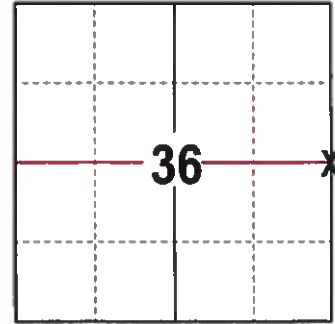
ELEVATION- --- DATUM ---

FIELD WORK DATE: 1/11/2017

### BASIS FOR MONUMENT LOCATION

1981 - PLS 878 EXCAVATED WITH BACKHOE AND FOUND A 6" X 6" X 24" SQUARE SANDSTONE MONUMENT 22" BELOW THE ROAD SURFACE. SET HARRISON OVERTOP OF THE STONE AND REMEASURED TO THE WITNESSES.

2017 - PLS 2994 FOUND A HARRISON 6 INCHES BELOW THE ROAD SURFACE AND 1 EXISTING WITNESS. THE HARRISON AGREES WITH EXISTING WITNESS. ACCEPTED HARRISON AND SET 4 NEW TIES.



LOCATION  
 (INDICATE CORNER BY "X")

SEAL:



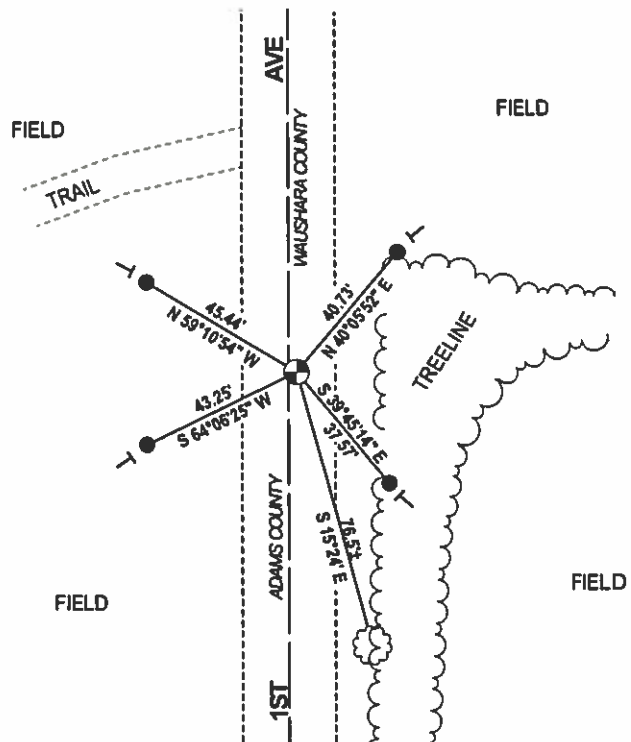
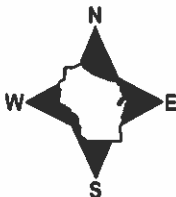
DATA SHOWN HERE ON THIS TIE SHEET IS CORRECT AND COMPLETE TO THE BEST OF MY KNOWLEDGE AND BELIEF.

PROFESSIONAL LAND SURVEYOR

DATE 3/15/17

### - TIE SKETCH -

NOTE: THE CORNER FALLS 2'± EAST OF THE CENTERLINE OF 1ST AVE.



- 3/4" x 18" IRON REBAR SET, 1.50#/FT
- ⊙ HARRISON FOUND
- ┌ VINYL "T" POST
- ☼ WITNESS TREE FOUND