

33
SECTION

18
TOWN

07
RANGE

ADAMS COUNTY

COUNTY CORNER NO: 127

ROMPORTOL ID: 41807330000

PUBLIC LAND SURVEY MONUMENT RECORD

TYPE OF MONUMENT: HARRISON (BROKEN-TOP)
ADAMS COUNTY COORDINATES, NAD 83 (2007)

N. 224516.072

E. 572968.753

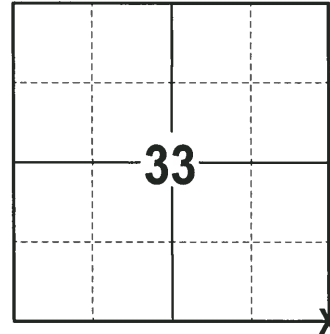
ELEVATION- _____ DATUM _____

FIELD WORK DATE: 01/09/2018

BASIS FOR MONUMENT LOCATION

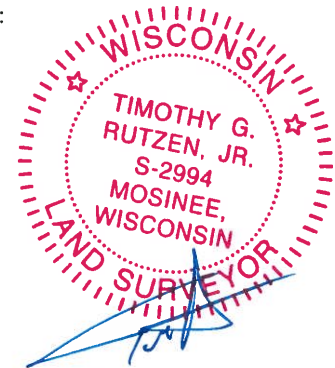
1979 - PLS 1478 SET CORNER AT THE CENTERLINE INTERSECTION OF EXISTING ROADS. EXCAVATION WITH A BACKHOE AT THIS LOCATION YIELDED NO EVIDENCE OF ANY PREVIOUS MONUMENTATION. THIS LOCATION FITS THE SECTION VERY WELL. SET A HARRISON MONUMENT AT THE CORNER LOCATION AND TIED OUT.

2017 - PLS 2994 FOUND A HARRISON MONUMENT WITH A BROKEN-TOP 18" BELOW THE ROAD SURFACE AND 2 RIGHT OF WAY IRONS WITH GUARD POSTS. FOUND NO EVIDENCE OF ANY TIES OR WITNESSES. ACCEPTED THE HARRISON MONUMENT WITH A BROKEN-TOP AS THE BEST EVIDENCE OF THE CORNER LOCATION. SET 2 NEW TIES AND MEASURED TO THE RIGHT OF WAY IRONS AND TIES.



LOCATION
(INDICATE CORNER BY "X")

SEAL:



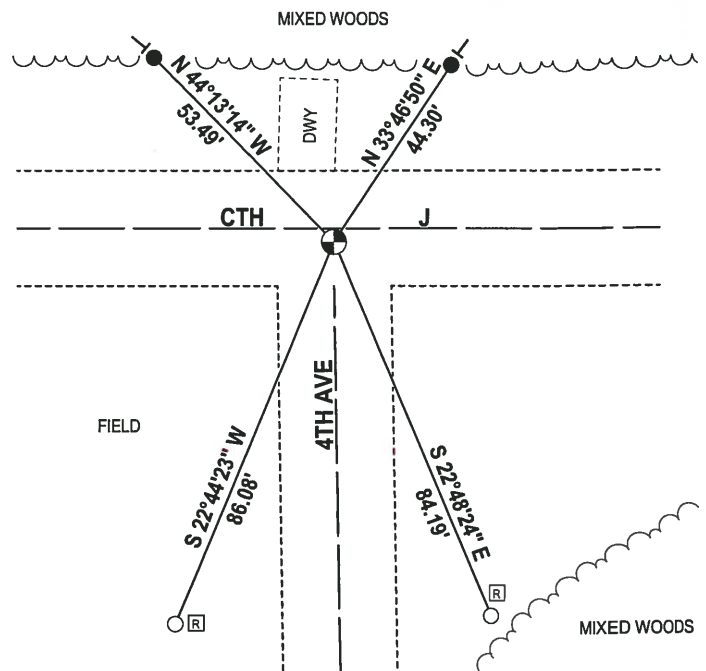
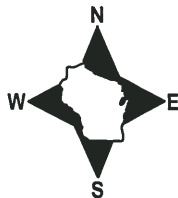
DATA SHOWN HERE ON THIS TIE SHEET IS CORRECT AND COMPLETE TO THE BEST OF MY KNOWLEDGE AND BELIEF.

PROFESSIONAL LAND SURVEYOR

DATE 2-2-18

- TIE SKETCH

NOTE: THE CORNER FALLS 2± SOUTH OF THE CENTERLINE OF CTH J.

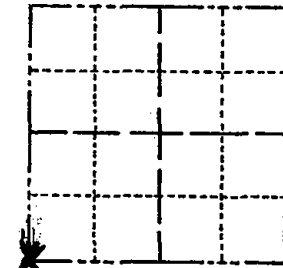


- 3/4" x 18" IRON REBAR SET, 1.50#/FT
- 5/8" IRON ROD FOUND
- ⊕ HARRISON (BROKEN-TOP) FOUND
- └ VINYL "T" POST
- Ⓜ RW GUARD POST

Government Land Corner Certificate

Adams County
 TYPE OF MONUMENT: HARRISON
 STATE PLANE COORDINATES: N _____
 E _____
 ELEVATION — M.S.L. DATUM: _____
 THETA ANGLE: _____
 FIELD BOOK: 77 PAGE 46
 DRAWN BY: R. NUBER

CORNER NO. 127
 SECTION 34
 TOWN 18
 RANGE 7



BASIS FOR MONUMENT LOCATION

Show info such as: History of corner, with reference to Vol. and pg., dates, surveyor; exact description of monument replaced; if location computed, by taped or EDM traverse; landowner remarks, etc. (Use reverse side if necessary)

Set corner at the centerlines of existing roads. excavation with backhoe at this location yielded no evidence of any previous monumentation. this location "fits" the section very well.

SEAL:



DATA SHOWN HERE ON CERTIFIED CORRECT:

Gregory P. Rhinehart
 Registered Land Surveyor

DATE: 9/9/79

TIE SKETCH

Show at least four ties, also fence lines, roads, topo, size and type of witness trees and if off road - best way to arrive at corner.

