

35
SECTION

18
TOWN

07
RANGE

ADAMS COUNTY

COUNTY CORNER NO: 130

ROMPORTOL ID: 41807350020

PUBLIC LAND SURVEY MONUMENT RECORD

TYPE OF MONUMENT: HARRISON (BROKEN-TOP)
ADAMS COUNTY COORDINATES, NAD 83 (2007)

N. 224552.213

E. 580902.717

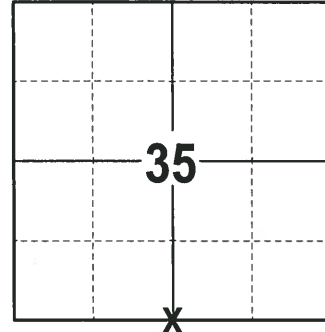
ELEVATION- - - DATUM - -

FIELD WORK DATE: 01/10/2018

BASIS FOR MONUMENT LOCATION

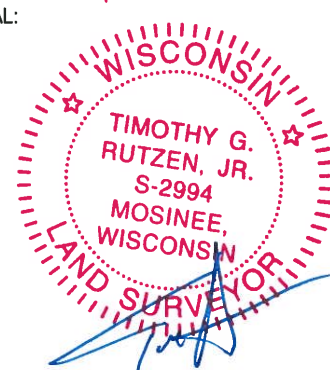
1979 - PLS 1478 CALCULATED SEARCH LOCATION ON A LINE BETWEEN ADJACENT SECTION CORNERS AND OPPOSITE OF POSSESSION LINE TO THE SOUTH. THIS LOCATION BEST FITS POSSESSION THROUGHOUT THE SECTION. EXCAVATION WITH A BACKHOE YIELDED NO EVIDENCE OF ANY MONUMENTATION. SET A HARRISON AT CALCULATED POSITION AND TIED OUT.

2017 - PLS 2994 FOUND A HARRISON MONUMENT WITH A BROKEN-TOP 18" BELOW THE ROAD SURFACE, 1 TIE AND 1 RIGHT OF WAY IRON WITH GUARD POST. THE MONUMENT AGREES WITH THE EXISTING TIE. ACCEPTED THE HARRISON MONUMENT WITH A BROKEN-TOP AS THE CORNER LOCATION. SET 2 NEW TIES AND MEASURED TO THE TIES.



LOCATION
(INDICATE CORNER BY "X")

SEAL:



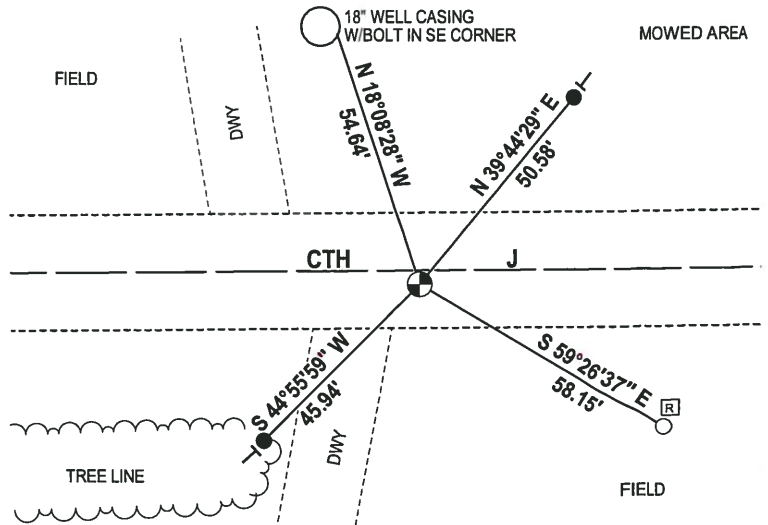
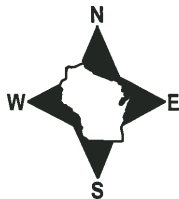
DATA SHOWN HERE ON THIS TIE SHEET IS CORRECT AND COMPLETE TO THE BEST OF MY KNOWLEDGE AND BELIEF.

PROFESSIONAL LAND SURVEYOR

DATE 2-2-18

- TIE SKETCH

NOTE: THE CORNER FALLS 3± SOUTH OF THE CENTERLINE OF CTH J.

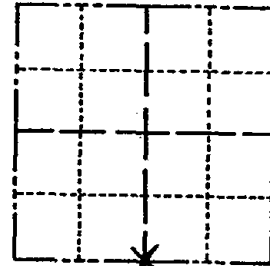


- 3/4" x 18" IRON REBAR SET, 1.50#/FT
- 3/4" IRON ROD FOUND
- ⊕ HARRISON (BROKEN-TOP) FOUND
- ▣ RW GUARD POST
- VINYL "T" POST

Government Land Corner Certificate

Adams County
 TYPE OF MONUMENT: Harrison
 STATE PLANE COORDINATES: N _____
 E _____
 ELEVATION — M.S.L. DATUM: _____
 THETA ANGLE: _____
 FIELD BOOK: 57 PAGE 102
 DRAWN BY: NJ

CORNER NO. 130
 SECTION 35
 TOWN 18
 RANGE 7



LOCATION
(Indicated by 'X')

BASIS FOR MONUMENT LOCATION

Show info such as: History of corner, with reference to Vol. and pg., dates, surveyor; exact description of monument replaced; if location computed, by taped or EDM traverse; landowner remarks, etc. (Use reverse side if necessary)

Set monument on line between adjacent section corners - opposite possession line to the south. this location best fits possession throughout the section, excavation with backhoe yielded no evidence of any monumentation.

SEAL:



DATA SHOWN HERE ON
CERTIFIED CORRECT:

Gregory P Rhinehart
Registered Land Surveyor

DATE: 10-11-79

TIE SKETCH

Show at least four ties, also fence lines, roads, topo, size and type of witness trees' and if off road - best way to arrive at corner.

