

## PUBLIC LAND SURVEY MONUMENT RECORD

TYPE OF MONUMENT: HARRISON  
 ADAMS COUNTY COORDINATES, NAD 83 (2007)

N. 266384.042

E. 492061.809

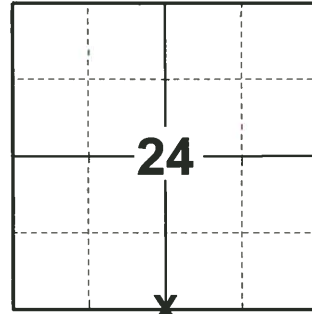
ELEVATION- \_\_\_\_\_ DATUM \_\_\_\_\_

FIELD WORK DATE: 03/19/2019

### BASIS FOR MONUMENT LOCATION

1982 - PLS 878 NO RECORDS OF ANY RESURVEYS. THIS CORNER IS SET ON A STRAIGHT LINE AND EQUIDISTANT BETWEEN THE MONUMENT AT THE SE CORNER OF THIS SECTION AND THE SW CORNER OF THIS SECTION. THE THEORETICAL SW CORNER WAS SET AS FOLLOWS: THE NORTH LINE OF THE NE1/4 OF THIS SECTION WAS EXTENDED AND DOUBLED TO THE WEST TO ESTABLISH THE NW CORNER OF THIS SECTION. THE LINE AND DISTANCE FROM THE THEORETICAL NW CORNER TO THE W1/4 CORNER WAS DOUBLED AND EXTENDED SOUTH TO ESTABLISH THE THEORETICAL SW CORNER OF THIS SECTION. THIS GIVES US DIMENSIONS ALL THE WAY AROUND TRHE SECTION WHICH QUITE COMPATIBLE WITH THE ORIGINAL GOVERNMENT SURVEY NOTES.

2019 - PLS 2675 FOUND HARRISON FLUSH WITH THE GROUND SURFACE AND 4 WITNESSES. THE MONUMENT AGREES WITH ALL WITNESSES. ACCEPTED HARRISON AS THE CORNER LOCATION. SET 4 NEW TIES AND MEASURED TO EXISTING WITNESSES.



LOCATION

(INDICATE CORNER BY "X")

SEAL:

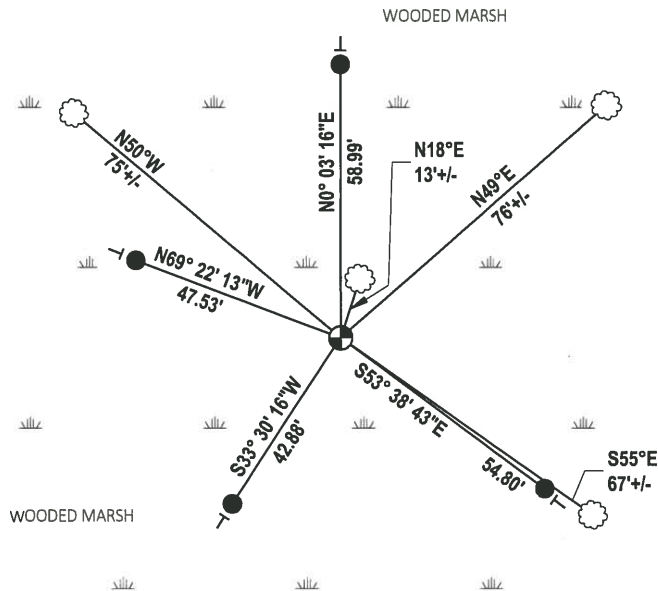


DATA SHOWN HERE ON THIS TIE SHEET IS CORRECT AND COMPLETE TO THE BEST OF MY KNOWLEDGE AND BELIEF.

PROFESSIONAL LAND SURVEYOR

DATE 5/1/19

### - TIE SKETCH

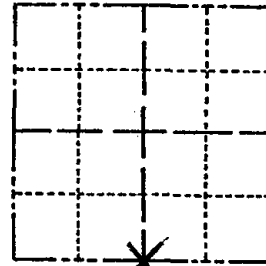


- SET 3/4" x 18" IRON REBAR, 1.50#/FT
- ⊕ FOUND HARRISON MONUMENT
- VINYL "T" POST
- ☼ WITNESS TREE

# Government Land Corner Certificate

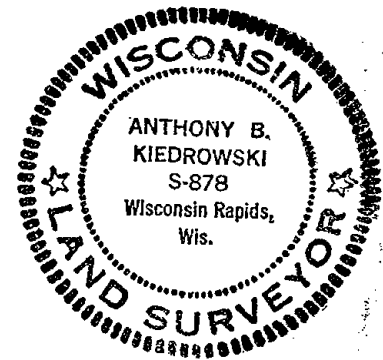
ADAMS County  
 TYPE OF MONUMENT: HARRISON  
 STATE PLANE COORDINATES: N \_\_\_\_\_  
 E \_\_\_\_\_  
 ELEVATION — M.S.L. DATUM: \_\_\_\_\_  
 THETA ANGLE: \_\_\_\_\_  
 FIELD BOOK: \_\_\_\_\_ PAGE \_\_\_\_\_  
 DRAWN BY: ROBERT T. WELCH

CORNER NO. 92  
 SECTION 24  
 TOWN 19  
 RANGE 4



LOCATION  
 (Indicated by 'X')

SEAL:



DATA SHOWN HERE ON  
 CERTIFIED CORRECT:

*Anthony B. Kiedrowski*  
 Registered Land Surveyor

DATE: 3-5-82

## BASIS FOR MONUMENT LOCATION

Show info such as: History of corner, with reference to Vol. and pg., dates, surveyor; exact description of monument replaced; if location computed, by taped or EDM traverse; landowner remarks, etc. (Use reverse side if necessary)

No record of any resurveys. This corner is set on a straight line and equidistant between the monument at the SE corner of this Section and the SW corner of this Section.

The theoretical <sup>SW</sup> corner was set as follows:

The North line of the NE 1/4 of this Section was extended and doubled to the West to establish the NW corner of this Section. The line and distance from the theoretical NW corner to the W 1/2 corner was doubled and extended South to establish the theoretical SW corner of this Section. This gives us dimensions all the way around the Section which are quite compatible with the original government survey notes.

## TIE SKETCH

Show at least four ties, also fence lines, roads, topo, size and type of witness trees and if off road - best way to arrive at corner.

