

PUBLIC LAND SURVEY MONUMENT RECORD

TYPE OF MONUMENT: HARRISON
ADAMS COUNTY COORDINATES, NAD 83 (2007)

N. 287569.362

E. 525534.326

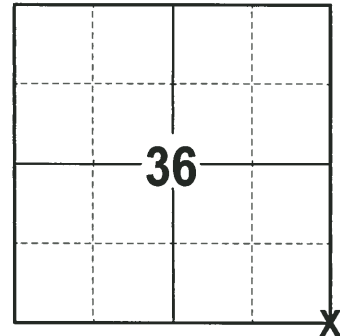
ELEVATION- - - DATUM - -

FIELD WORK DATE: 01/17/2018

BASIS FOR MONUMENT LOCATION

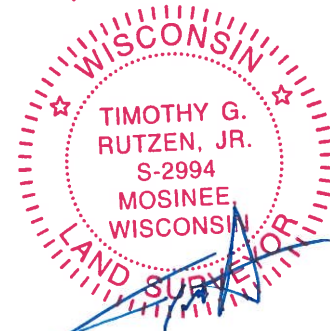
2015 - PLS 2452 FOUND A HARRISON MONUMENT 6"± BELOW THE GRADE OF THE ASPHALT ROAD PER TIE SHEET BY WAYNE BASLER, DATED, 7-31-75. ACCEPTED THE HARRISON MONUMENT AS THE CORNER AND PLACED 4 TIES. DATE OF FIELD SURVEY & MONUMENT RECOVERY WAS SEPTEMBER 02, 2015.

2018 - PLS 2994 FOUND A HARRISON MONUMENT 8" BELOW THE ROAD SURFACE AND 4 TIES. THE MONUMENT AGREES WITH 3 OF THE EXISTING TIES THE SE TIE SEEMS TO HAVE BEEN MOVED. ACCEPTED THE HARRISON MONUMENT AS THE CORNER LOCATION AND RE-MEASURED TO THE EXISTING TIES.



LOCATION
(INDICATE CORNER BY "X")

SEAL:



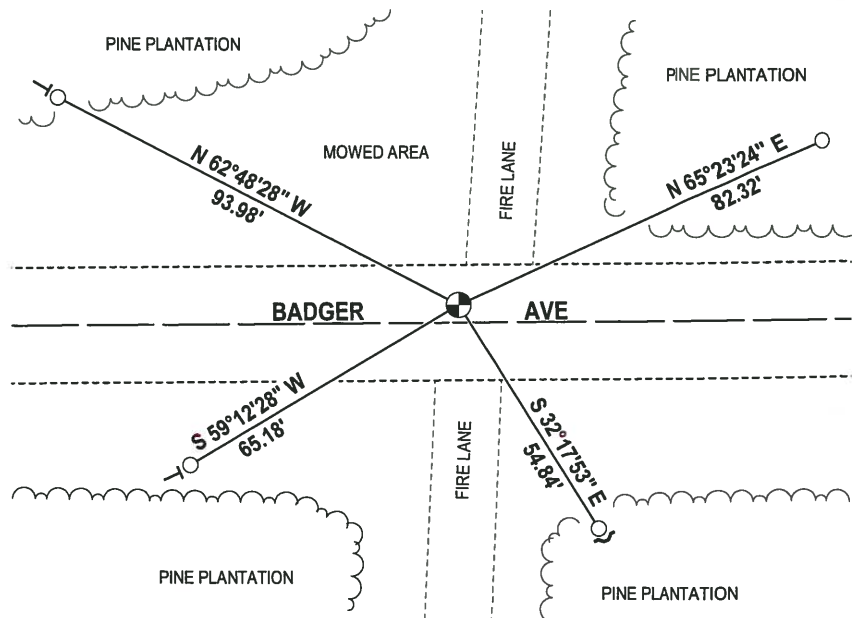
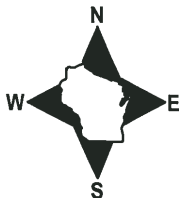
DATA SHOWN HERE ON THIS TIE SHEET IS CORRECT AND COMPLETE TO THE BEST OF MY KNOWLEDGE AND BELIEF.

PROFESSIONAL LAND SURVEYOR

DATE 3-1-18

- TIE SKETCH -

NOTE: THE CORNER FALLS 4"± NORTH OF THE CENTERLINE OF BADGER AVE.



- 3/4" IRON ROD FOUND
- ⊗ HARRISON FOUND
- ✓ STEEL FENCE POST
- ⊥ VINYL "T" POST