

PUBLIC LAND SURVEY MONUMENT RECORD

TYPE OF MONUMENT: HARRISON
 ADAMS COUNTY COORDINATES, NAD 83 (2007)

N. 287521.940

E. 509722.715

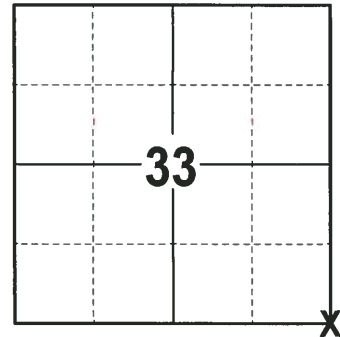
ELEVATION- --- DATUM ---

FIELD WORK DATE: 02/08/2018

BASIS FOR MONUMENT LOCATION

1973 - PLS 878 THE APPROXIMATE LOCATION OF THIS CORNER WAS POINTED OUT TO ME BY W.M. KIEFER, AREA RESIDENT AND COUNTY BOARD CHAIRMAN. EXCAVATION WITH A BACKHOE EXPOSED A STONE. THE STONE WAS LOWERED AND A HARRISON MONUMENT WAS SET ON TOP AND THE CORNER WAS TIED OUT.

2018 - PLS 2994 FOUND A HARRISON MONUMENT 24" BELOW THE ROAD SURFACE AND 1 TIE. THE MONUMENT AGREES WITH THE EXISTING TIE. ACCEPTED THE HARRISON MONUMENT AS THE CORNER LOCATION. SET 3 NEW TIES AND MEASURED TO THE TIES.



LOCATION
 (INDICATE CORNER BY "X")

SEAL:



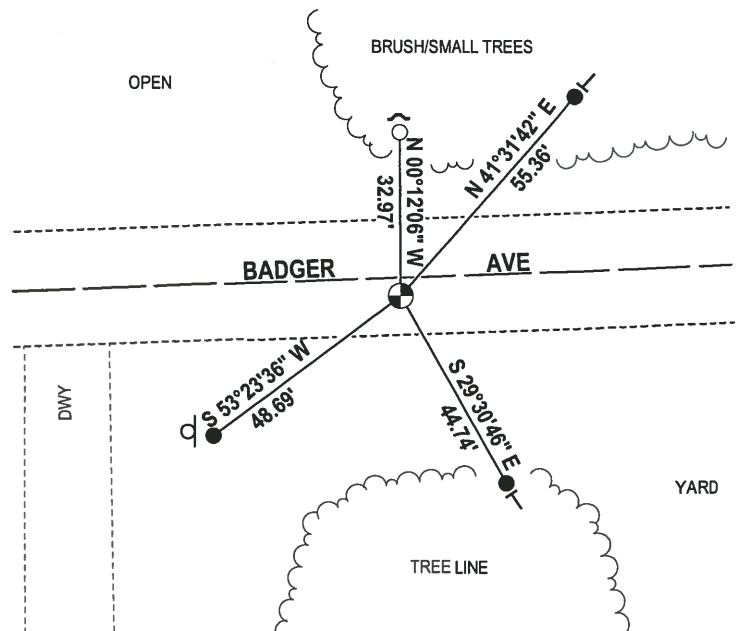
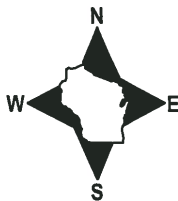
DATA SHOWN HERE ON THIS TIE SHEET IS CORRECT AND COMPLETE TO THE BEST OF MY KNOWLEDGE AND BELIEF.

PROFESSIONAL LAND SURVEYOR

DATE 3-1-18

- TIE SKETCH -

NOTE: THE CORNER FALLS 4± SOUTH OF THE CENTERLINE OF BADGER AVE.



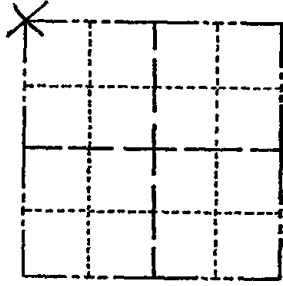
- 3/4" x 18" IRON REBAR SET, 1.50#/FT
- 1" IRON ROD FOUND
- ⊙ HARRISON FOUND
- d FIRE SIGN #7101
- ✓ STEEL FENCE POST
- VINYL "T" POST

ADAMS COUNTY

Survey Monument Record

TYPE OF MONUMENT: Harrison std.
STATE PLANE COORDINATES: N _____
E _____
ELEVATION - M.S.L. DATUM: _____
THETA ANGLE: _____
FIELD BOOK: 108 PAGE 39

CORNER NO. 263
SECTION 3
TOWN 19
RANGE 5



LOCATION (Indicated by 'X')

BASIS FOR MONUMENT LOCATION

(Use reverse side if necessary)

Show info such as: History of corner, with reference to Vol. and pg, dates, surveyor; exact description of monument replaced; if location computed, by taped or EDM traverse; landowner remarks, etc.

Approximate location of this corner pointed out to me by Wm Kiefer, area resident and County Board Chairman. Excavation with a backhoe exposed a stone. See picture attached. Stone was lowered and a Harrison set on top.

Iron pipe shown in picture was set along stone at one time, according to Mr. Kiefer, and had been ~~put~~ pulled out by grader.

SEAL:



OK 1 MARCH 74 CR-JG
OK 3-14-79 RN-SS

OK 4-12-84
DK-SS

CERTIFIED CORRECT:

Anthony B. Kiedrowski
Registered Land Surveyor

OK 12-28-89 SS
OK, 3-LEFT, 2-8-99, JG-SS

DATE: April, 73

TIE SKETCH

OK 1-15-04 - JG-SS

(Show at least four ties)

