

35
SECTION

20
TOWN

05
RANGE

ADAMS COUNTY

COUNTY CORNER NO: 130

ROMPORTOL ID: 42005350020

PUBLIC LAND SURVEY MONUMENT RECORD

TYPE OF MONUMENT: HARRISON
ADAMS COUNTY COORDINATES, NAD 83 (2007)

N. 287517.992

E. 5157640.114

ELEVATION- DATUM

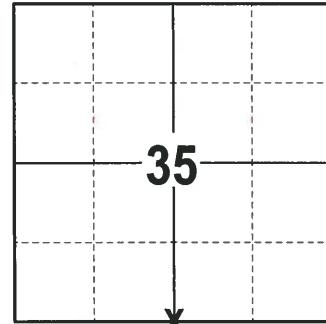
FIELD WORK DATE: 02/12/2018

BASIS FOR MONUMENT LOCATION

1979 - PLS 878 THIS CORNER WAS CALCULATED BY A RETRACEMENT OF THE SURVEY OF RUNNING DEER ACRES DONE BY S.T. MULLEN, JULY, 1969. DID NOT EXCAVATE BECAUSE OF VERY DEEP FILL IN THE ROAD. NO OTHER RECORD OF RESURVEYS WAS FOUND. SET A HARRISON MONUMENT AT THE CALCULATED LOCATION AND TIED OUT.

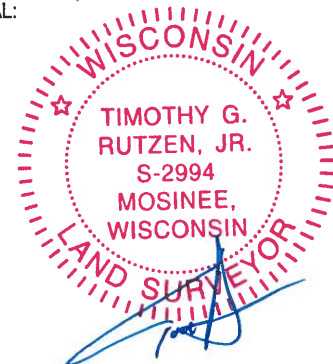
1999 - PLS (UNKNOWN) UPDATED TIE SHEET TO SHOW TIES IN PLACE AFTER THE MONUMENT WAS RE-SET FOLLOWING ROAD CONSTRUCTION.

2018 - PLS 2994 FOUND A HARRISON MONUMENT 12" BELOW THE ROAD SURFACE, 2 TIES AND 1 WITNESS TREE. THE MONUMENT AGREES WITH THE EXISTING NW TIE AND WITNESS TREE (THE NE TIE APPEARS TO BE DISTURBED). ACCEPTED THE HARRISON MONUMENT AS THE CORNER LOCATION. SET 2 NEW TIES AND MEASURED TO THE TIES AND WITNESS TREE.



LOCATION
(INDICATE CORNER BY "X")

SEAL:



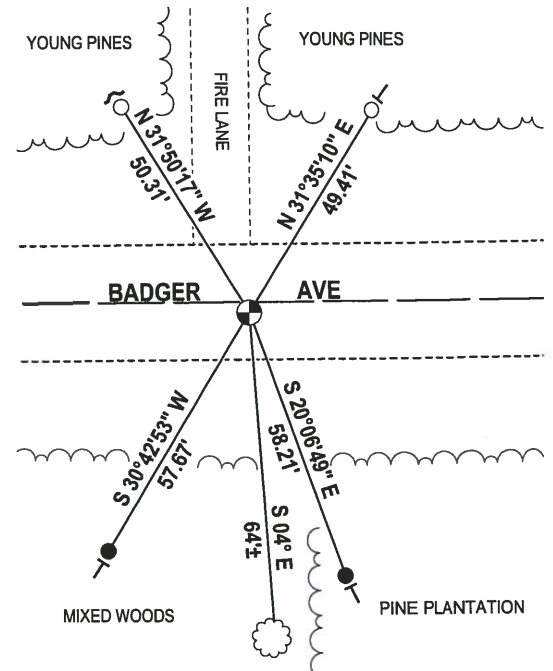
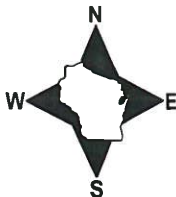
DATA SHOWN HERE ON THIS TIE SHEET IS CORRECT AND COMPLETE TO THE BEST OF MY KNOWLEDGE AND BELIEF.

PROFESSIONAL LAND SURVEYOR

DATE 3-1-18

- TIE SKETCH -

NOTE: THE CORNER FALLS 2'± SOUTH OF THE CENTERLINE OF BADGER AVE.

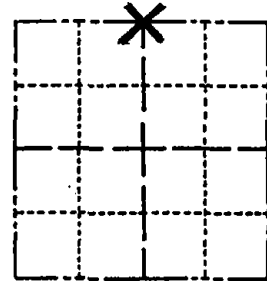


- 3/4" x 18" IRON REBAR SET, 1.50#/FT
- 3/4" IRON ROD FOUND
- ⊙ HARRISON FOUND
- ~ STEEL FENCE POST
- └ VINYL "T" POST
- ☼ WITNESS TREE FOUND

Government Land Corner Certificate

ADAMS County
 TYPE OF MONUMENT: Harrison standard
 STATE PLANE COORDINATES: N _____
 E _____
 ELEVATION — M.S.L. DATUM: _____
 THETA ANGLE: _____
 FIELD BOOK: _____ PAGE _____
 DRAWN BY: _____

CORNER NO. 10
 SECTION 2
 TOWN 19
 RANGE 5



LOCATION
(Indicated by 'X')

BASIS FOR MONUMENT LOCATION

Show info such as: History of corner, with reference to Vol. and pg., dates, surveyor; exact description of monument replaced; if location computed, by taped or EDM traverse; landowner remarks, etc. (Use reverse side if necessary)

SEAL:

This is an updated tie sheet to show ties in place after monument was reset following road construction. 6-10-99

SEE TIE SHEET BY A.B. KIEDROWSKI, DATED 10-31-79, FOR ADDITIONAL INFORMATION.

DATA SHOWN HERE ON CERTIFIED CORRECT:

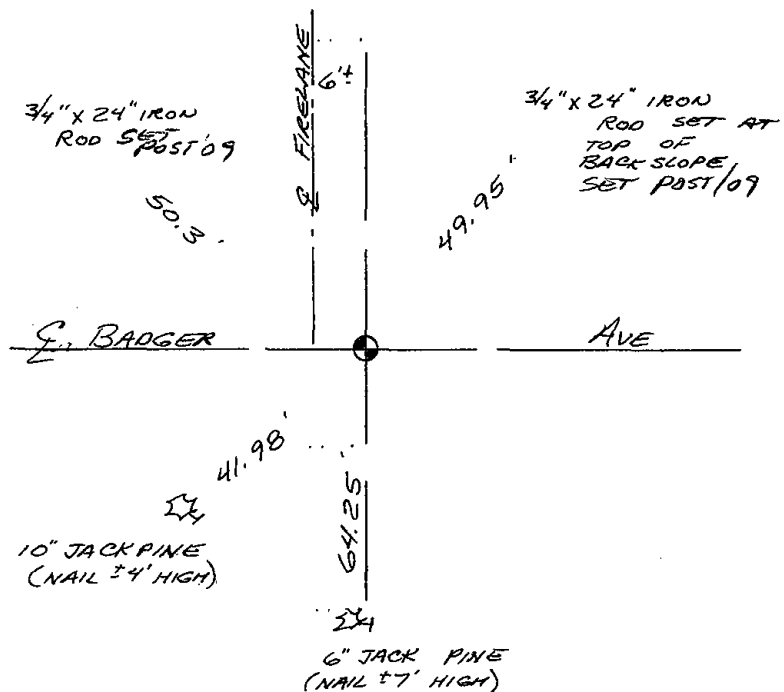
Registered Land Surveyor

DATE: _____

TIE SKETCH

Show at least four ties, also fence lines, roads, topo, size and type of witness trees and if off road - best way to arrive at corner.

HARRISON RESET 6-10-99



MAINTENANCE RECORD

Date	Init.	Remarks
12-31-02	JG	OK
02-12-09	SS	TIES OK

Government Land Corner Certificate

Adams County

TYPE OF MONUMENT: HARRISON 111.35 TEMP. P.I.C.

STATE PLANE COORDINATES: N _____
E _____

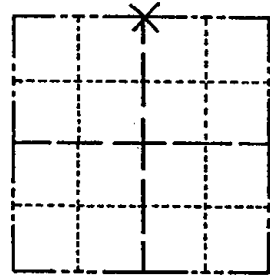
ELEVATION — M.S.L. DATUM: _____

THETA ANGLE: _____

FIELD BOOK: 74 PAGE 114

DRAWN BY: N.J.

CORNER NO. 10
SECTION 2
TOWN 19
RANGE 5



BASIS FOR MONUMENT LOCATION

Show info such as: History of corner, with reference to Vol. and pg., dates, surveyor; exact description of monument replaced; if location computed, by taped or EDM traverse; landowner remarks, etc. (Use reverse side if necessary)

This corner set by a retracement of the survey of Running Deer Acres done by S.T.Mullen, July, 1969. Did not excavate because of very deep fill in the road. No other record of resurveys.

Ok 4-17-84 DK-SS
" 12-28-88 SS
OK 3-2-94, JG
2-GONE, 4-LEFT, 2-12-98 - JG

SEAL:



DATA SHOWN HERE ON CERTIFIED CORRECT:

Anthony B. Kiedrowski
Registered Land Surveyor

DATE: 10/31/79

TIE SKETCH

Show at least four ties, also fence lines, roads, topo, size and type of witness trees and if off road - best way to arrive at corner.

