

## PUBLIC LAND SURVEY MONUMENT RECORD

TYPE OF MONUMENT: 2-3/8" O.D. IRON PIPE W/ALUMINUM CAP  
 ADAMS COUNTY COORDINATES, NAD 83 (1905)

N. 286611.119

E. 504448.078

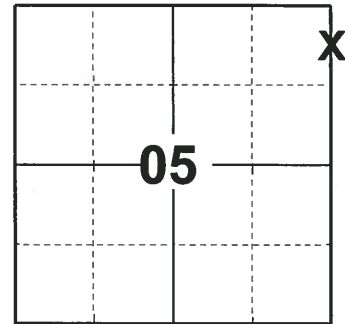
ELEVATION- \_\_\_\_\_ DATUM \_\_\_\_\_

FIELD WORK DATE: 10/07/2019

### BASIS FOR MONUMENT LOCATION

1983 - PLS 1444 THIS MEANDER CORNER WAS SET BY USING A SECTION SUMMARY PROVIDED BY KEN CARLSON AND EXTENDING THE LINE NORTH TO THE WATERS EDGE.

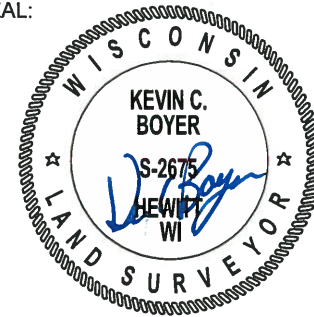
2019 - PLS 2675 FOUND 2-3/8" O.D. IRON PIPE WITH ALUMINUM CAP 3"± BELOW THE GROUND, 1 TIE AND 2 WITNESSES. THE TIE HAS BEEN DISTURBED BUT THE MONUMENT AGREES WITH BOTH WITNESSES. ACCEPTED THE 2-3/8" O.D. IRON PIPE WITH ALUMINUM CAP AS THE CORNER LOCATION. SET 4 NEW TIES AND MEASURED TO THE EXISTING TIE AND WITNESSES.



### LOCATION

(INDICATE CORNER BY "X")

SEAL:



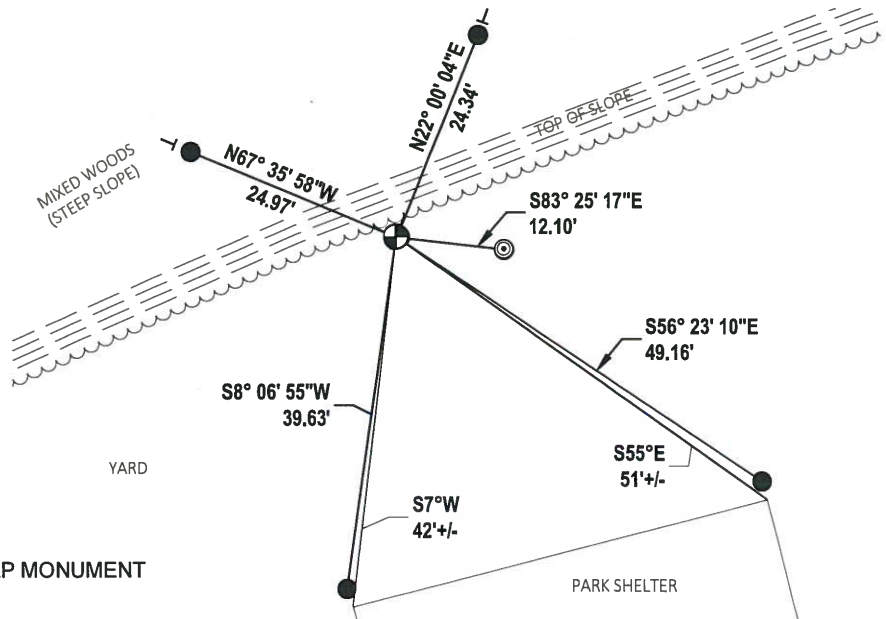
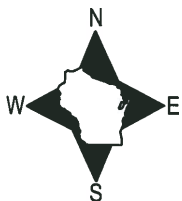
DATA SHOWN HERE ON THIS TIE SHEET IS CORRECT AND COMPLETE TO THE BEST OF MY KNOWLEDGE AND BELIEF.

PROFESSIONAL LAND SURVEYOR

DATE 11/25/19

### - TIE SKETCH

NOTE: TIES SET 2"± OFF BUILDING CORNERS, UNDERGROUND 4"±



- SET 3/4" x 18" IRON REBAR, 1.50#/FT
- ⊙ FOUND 2-3/8" O.D. IRON PIPE
- ⊕ FOUND 2-3/8" O.D. IRON PIPE WITH ALUM. CAP MONUMENT
- VINYL "T" POST