

04
SECTION

19
TOWN

05
RANGE

ADAMS COUNTY

COUNTY CORNER NO: 17
ROMPORTOL ID: 41905042000

PUBLIC LAND SURVEY MONUMENT RECORD

TYPE OF MONUMENT: HARRISON (BROKEN-TOP)
ADAMS COUNTY COORDINATES, NAD 83 (1905)

N. 284869.127

E. 509697.386

ELEVATION- DATUM

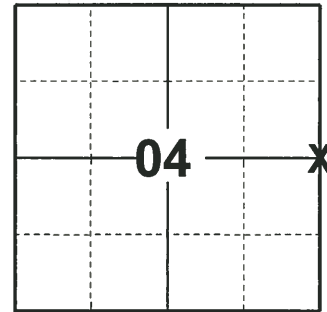
FIELD WORK DATE: 11/21/2019

BASIS FOR MONUMENT LOCATION

1977 - PLS 1267 TRAVERSE SECTION BY EDM/T2. SET CORNER ON LINE AND PRORATED AS PER M.C. SMITHS NOTES. FOUND NO EVIDENCE OF M.C. SMITHS BEARING TREES AS PER HIS SURVEY MARCH 28, 1918.

1981 - PLS 1267 NOTE: HARRISON WAS SET IN ERROR FROM COMPUTATIONS FROM SECTION PROTRACTION BY EDM/T2 IN 1977; RESET HARRISON ON A STRAIGHT LINE AND PRORATION FROM M.C. SMITH'S DISTANCES. IN RESETTING HARRISON, WE FOUND EVIDENCE OF CHARCOAL PIECES AND DISCOLORATION OF THE SOIL AT CORNER LOCATION. JIM LOWREY IN RECENT SURVEY VERIFIES PROPER LOCATION OF HARRISON OF HARRISON AS RESET.

2019 - PLS 2675 FOUND HARRISON (BROKEN-TOP) 6"± BELOW THE GROUND, DID NOT RECOVER ANY EXISTING TIES OR WITNESSES DUE TO RECENT ROAD CONSTRUCTION AND UTILITY WORK. CHECKED IF THE HARRISON (BROKEN-TOP) WAS ON LINE AND EQUIDISTANT BETWEEN THE SECTION CORNER TO THE NORTH AND SOUTH. THE HARRISON (BROKEN-TOP) MONUMENT WAS 7'± SOUTH AND 0.5'± WEST FROM BEING ON LINE AND EQUIDISTANT. THE DISTANCE TO THE NORTH FITS WITH CSM 3436, AND 3437. THE DISTANCE TO THE SOUTH FITS WITH CSM 3891. ACCEPTED THE HARRISON (BROKEN-TOP) AS THE BEST EVIDANCE OF THE CORNER LOCATION. SET 4 NEW TIES AND MEASURED TO A FOUND 3/4" IRON ROD.



LOCATION
(INDICATE CORNER BY "X")

SEAL:



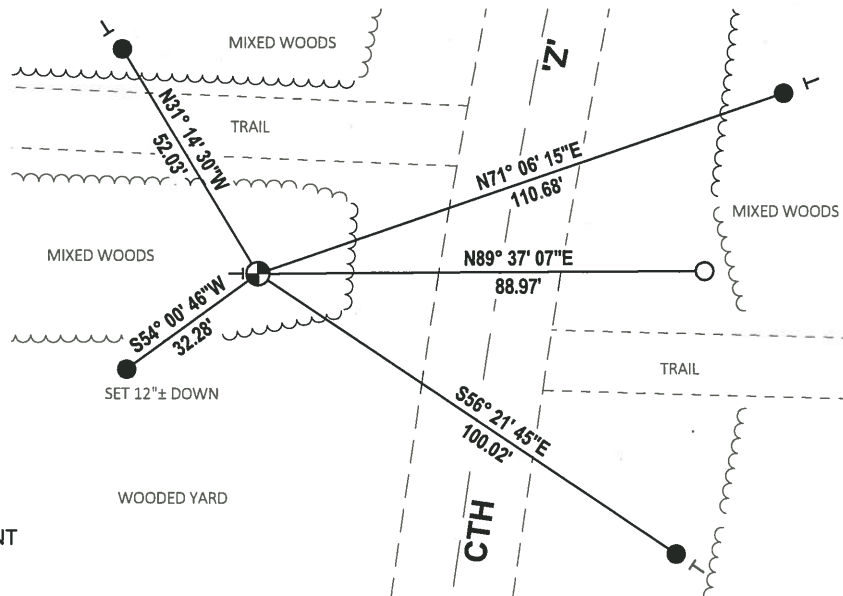
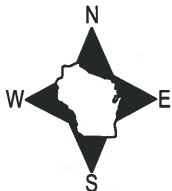
DATA SHOWN HERE ON THIS TIE SHEET IS CORRECT AND COMPLETE TO THE BEST OF MY KNOWLEDGE AND BELIEF.

PROFESSIONAL LAND SURVEYOR

DATE 1/9/2020

TIE SKETCH

NOTE: THE CORNER FALLS 49.6'± WEST OF CTH 'Z' CENTERLINE.

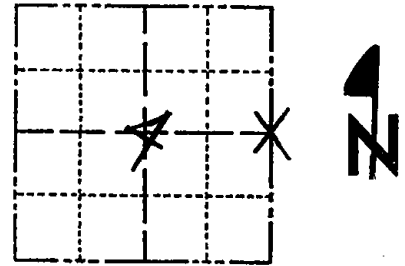


- SET 3/4" x 18" IRON REBAR, 1.50#/FT
- FOUND 3/4" IRON ROD
- ⊙ FOUND HARRISON (BROKEN-TOP) MONUMENT
- VINYL "T" POST

Government Land Corner Certificate

ADAMS County
 TYPE OF MONUMENT: 30" STANDARD HARRISON
 STATE PLANE COORDINATES: N _____
 E _____
 ELEVATION — M.S.L. DATUM: _____
 THETA ANGLE: _____
 FIELD BOOK: _____ PAGE _____
 DRAWN BY: _____

CORNER NO. 17
 SECTION 4
 TOWN 19
 RANGE 5



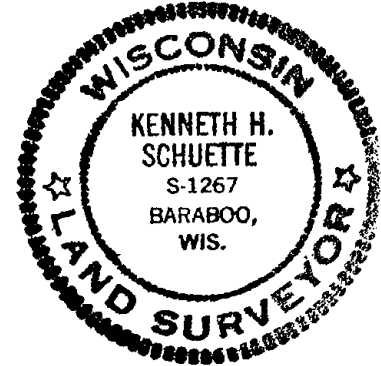
LOCATION
(Indicated by 'X')

BASIS FOR MONUMENT LOCATION

Show info such as: History of corner, with reference to Vol. and pg., dates, surveyor; exact description of monument replaced; if location computed, by taped or EDM traverse; landowner remarks, etc. (Use reverse side if necessary)

Note: Harrison was set in error from computations from Section protraction by Edm & T-2 in 1977; reset Harrison on a straight line and proration from M.C. Smith's distances. In resetting Harrison, we found evidence of charcoal peices and discoloration of the soil at corner location. Jim Lowrey in recent survey verifies proper location of Harrison as reset.

SEAL:



DATA SHOWN HERE ON
CERTIFIED CORRECT:

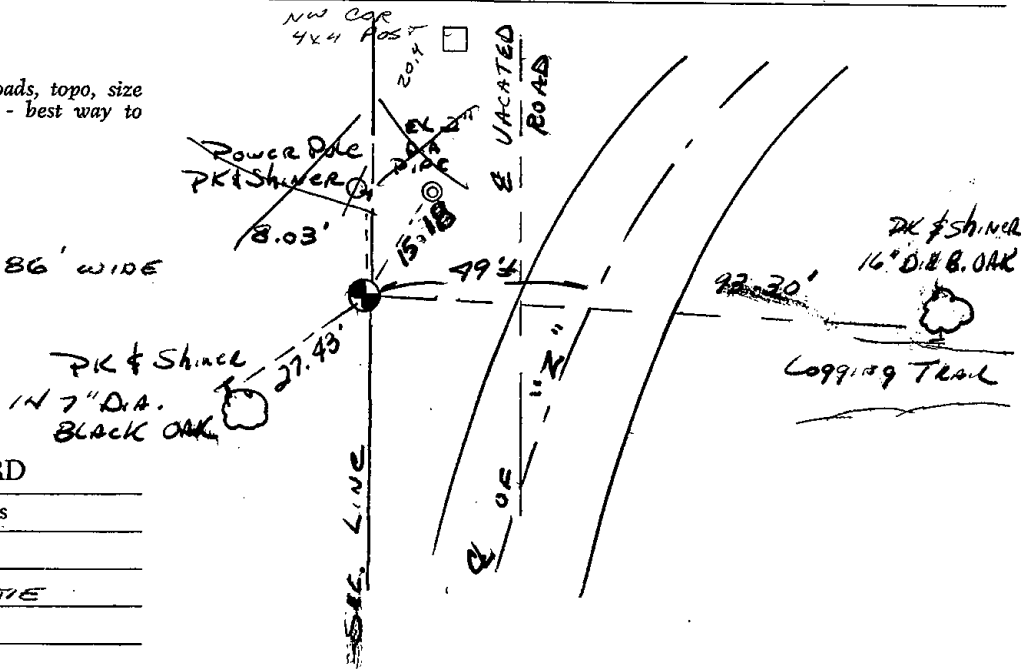
Ken Schuette
Registered Land Surveyor

DATE: 3 March 1981

TIE SKETCH

Show at least four ties, also fence lines, roads, topo, size and type of witness trees' and if off road - best way to arrive at corner.

SEE CSM 4447
 1 1/4" Rod 15.16' EAST
 CSM 3437
 1 1/4" Rods @ ROW 66.86' WIDE



MAINTENANCE RECORD

Date	Init.	Remarks
4-12-84	DK-SS	Ok
2-12-09	SS	CSM BEST TIE

CORRECTION MAP
 REC'D 4-27-81

ADAMS COUNTY

Survey Monument Record

TYPE OF MONUMENT: 30" HARRISON

STATE PLANE COORDINATES: N _____
 E _____

ELEVATION — M.S.L. DATUM: _____

THETA ANGLE: _____

FIELD BOOK: _____ PAGE _____

BASIS FOR MONUMENT LOCATION

(Use reverse side if necessary)

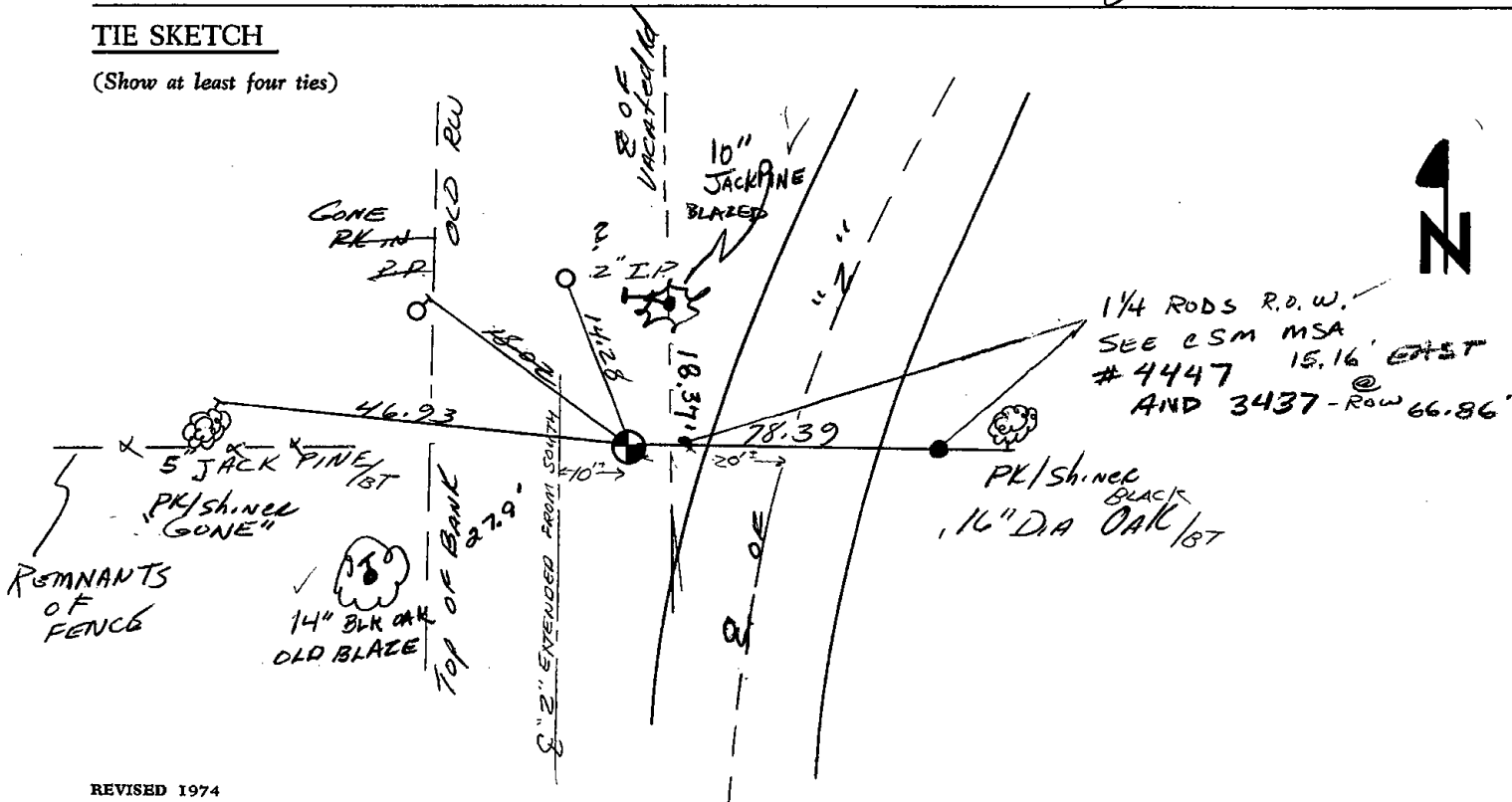
Show info such as: History of corner, with reference to Vol. and pg, dates, surveyor; exact description of monument replaced; if location computed, by taped or EDM traverse; landowner remarks, etc.

TRAVERSE SECTION BY EDM AND T-2. SET CORNER ON LINE AND PRORATED AS PER M.C. SMITH'S NOTES. FOUND NO EVIDENCE OF M.C. SMITH'S BEARING TREES AS PER HIS SURVEY 28 MARCH 1918.

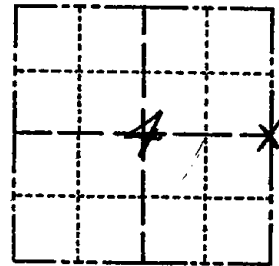
OK 3-14-79 RN-55
 OK 1 MARCH 79 CR-JG
 2-GONE, 1-NEW, 1-15-04 JG-JS

TIE SKETCH

(Show at least four ties)



CORNER NO. 17
 SECTION 7
 TOWN 19N
 RANGE 5E



LOCATION
 (Indicated by 'X')

SEAL:



CERTIFIED CORRECT:

Ken Schuette
 Registered Land Surveyor

DATE: 17 June 1977



1/4 RODS R.O.W.
 SEE CSM MSA
 # 4447 15.16' EAST
 AND 3437 - Row 66.86'