

## PUBLIC LAND SURVEY MONUMENT RECORD

TYPE OF MONUMENT: HARRISON (BROKEN-TOP)  
 ADAMS COUNTY COORDINATES, NAD 83 (1905)

N. 284861.988

E. 514944.211

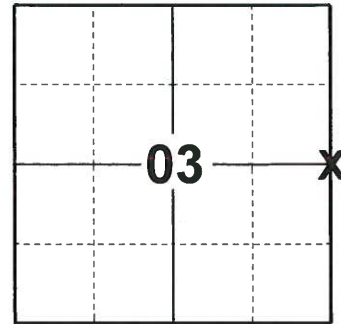
ELEVATION- - - - DATUM - - - -

FIELD WORK DATE: 09/30/2019

### BASIS FOR MONUMENT LOCATION

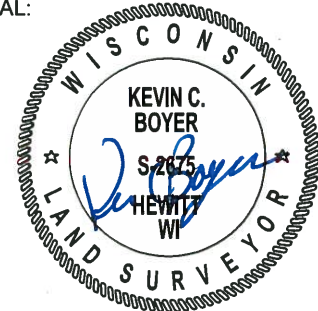
1979 - PLS EXCAVATED WITH BACKHOE, FOUND DEFINITE REMAINS OF CHARRED WOOD POST. REPLACED SAME WITH HARRISON AND VERIFIED LOCATION WITH EDM TRAVERSE. NO RECORD OF RESURVEYS.

2019 - PLS 2675 FOUND HARRISON (BROKEN-TOP) 8"± BELOW THE ROAD SURFACE, 1 TIE AND 3 WITNESSES. THE MONUMENT AGREES WITH 1 OF THE WITNESSES, THE ORIGIN OF THE TIE AND THE 2 WITNESS TREES ARE UNKNOWN. ACCEPTED THE HARRISON (BROKEN-TOP) AS THE CORNER LOCATION. SET 3 NEW TIES AND MEASURED TO THE EXISTING TIE AND WITNESSES.



**LOCATION**  
 (INDICATE CORNER BY "X")

SEAL:



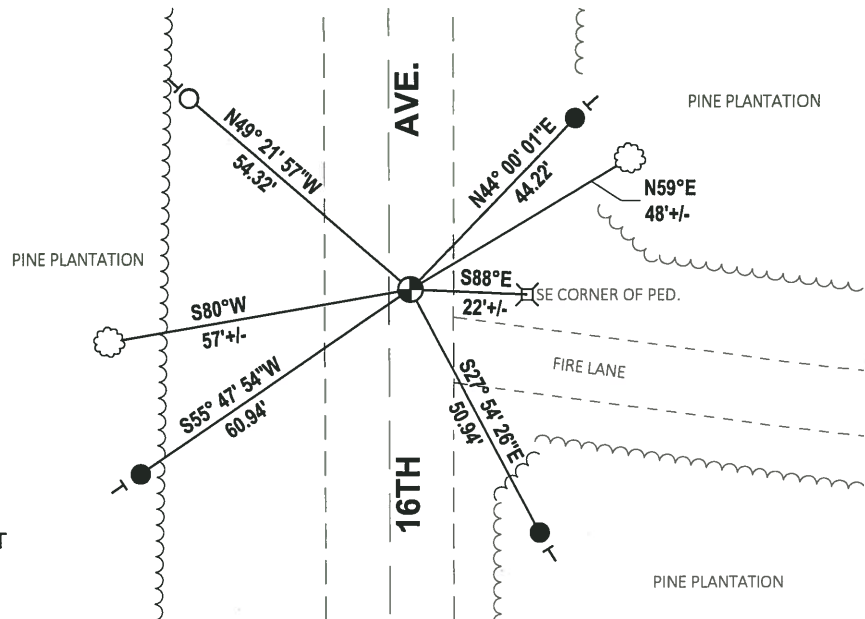
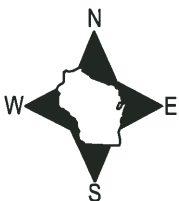
DATA SHOWN HERE ON THIS TIE SHEET IS CORRECT AND COMPLETE TO THE BEST OF MY KNOWLEDGE AND BELIEF.

PROFESSIONAL LAND SURVEYOR

DATE 11/25/19

### TIE SKETCH

NOTE: THE CORNER FALLS 4'± EAST OF 16TH AVE. CENTERLINE.

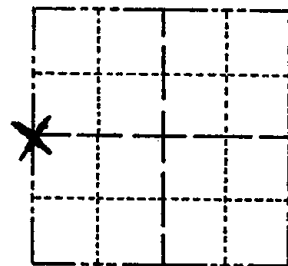


- SET 3/4" x 18" IRON REBAR, 1.50#/FT
- FOUND 3/4" IRON ROD
- ⊕ FOUND HARRISON (BROKEN-TOP) MONUMENT
- ┊ VINYL "T" POST
- ⊗ WITNESS TREE

# Government Land Corner Certificate

Adams County  
 TYPE OF MONUMENT: Harrison  
 STATE PLANE COORDINATES: N \_\_\_\_\_  
 E \_\_\_\_\_  
 ELEVATION — M.S.L. DATUM: \_\_\_\_\_  
 THETA ANGLE: \_\_\_\_\_  
 FIELD BOOK: 74 (102) PAGE 113 (53)  
 DRAWN BY: N.J.

CORNER NO. 18  
 SECTION 2  
 TOWN 19  
 RANGE 5



LOCATION  
(Indicated by 'X')

## BASIS FOR MONUMENT LOCATION

Show info such as: History of corner, with reference to Vol. and pg., dates, surveyor; exact description of monument replaced; if location computed, by taped or EDM traverse; landowner remarks, etc. (Use reverse side if necessary)

Excavated with backhoe, Found definite remains of charred wood post. Replaced same with Harrison and verified location with EDM traverse. No record of resurveys.

SEAL:



DATA SHOWN HERE ON  
CERTIFIED CORRECT:

*Anthony B. Kiedrowski*  
Registered Land Surveyor

DATE: 10/25/79

Ok 4-17-84 DK-SS

1 710 MISSING - 4 REMAIN 12-28-88

Z NEW TIES 1 MARCH 99 CR-JL

OK, 2-12-98 - JG

OK, 12-31-02 - JG

" 2-11-09 SS

## TIE SKETCH

Show at least four ties, also fence lines, roads, topo, size and type of witness trees and if off road - best way to arrive at corner.

