

PUBLIC LAND SURVEY MONUMENT RECORD

TYPE OF MONUMENT: 1-1/4" O.D. IRON PIPE
 ADAMS COUNTY COORDINATES, NAD 83 (1905)

N. 282262.286

E. 500444.208

ELEVATION- - - - DATUM - - - -

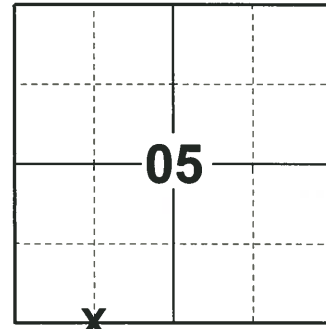
FIELD WORK DATE: 10/07/2019

BASIS FOR MONUMENT LOCATION

1983 - PLS 1444 THIS CORNER IS AN IRON PIPE SET IN C.S.M. NO 767 AND IS ON THE SOUTH LINE OF SECTION 5. THIS PIPE WAS USED FOR MEANDER CORNER AS IT CAN BE EASILY FOUND. LOCATED 100± FEET NORTH OF WHITE HOUSE #809.

2002 - PLS 2528 FOUND 1-1/4" O.D. PIPE OF UNKNOWN ORIGIN. K. CARLSON USED AS "40" CORNER ON APRIL 28, 1981 SECTION SUMMARY. I DECIDED TO ESTABLISH THIS AS MEANDER CORNER SO THAT IT COULD BE USED AS A TIE IN THE NW1/4.

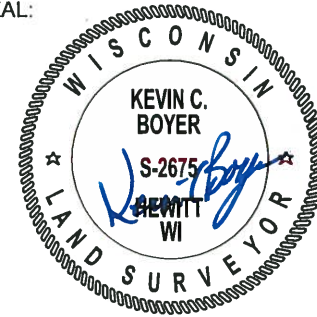
2019 - PLS 2675 FOUND 1-1/4" O.D. IRON PIPE MONUMENT 2"± ABOVE THE GROUND, 2 TIES AND 2 WITNESSES. THE MONUMENT AGREES WITH ONE OF THE TIES AND BOTH WITNESSES. ACCEPTED THE 1-1/4" IRON PIPE AS THE 40 CORNER/ MEANDER CORNER LOCATION. SET 2 NEW TIES, MEASURED TO A FOUND PROPERTY IRON AND THE EXISTING TIES AND WITNESS.



LOCATION

(INDICATE CORNER BY "X")

SEAL:



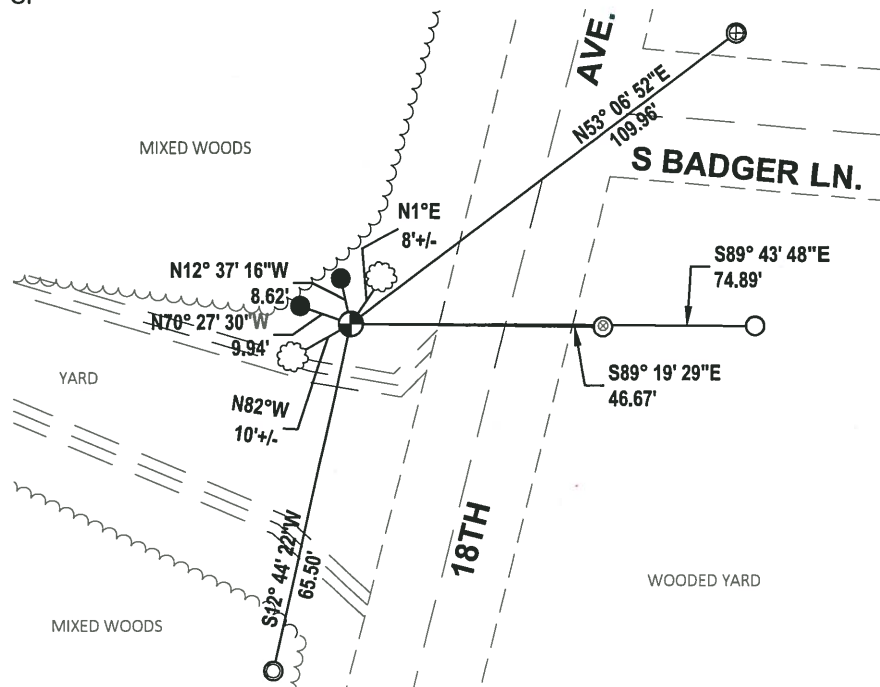
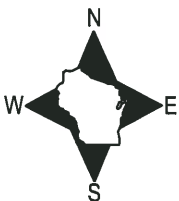
DATA SHOWN HERE ON THIS TIE SHEET IS CORRECT AND COMPLETE TO THE BEST OF MY KNOWLEDGE AND BELIEF.

PROFESSIONAL LAND SURVEYOR

DATE 11/25/19

TIE SKETCH

NOTE: THE MONUMENT FALLS 27.8± WEST OF 18TH AVE. CENTERLINE.



- SET 3/4" x 18" IRON REBAR, 1.50#/FT
- FOUND 3/4" IRON ROD
- ⊕ FOUND 1.0" O.D. IRON PIPE
- ⊙ FOUND 1-1/4" O.D. IRON PIPE
- ⊗ FOUND 1-1/2" O.D. IRON PIPE
- ⊕ FOUND 1-1/4" O.D. IRON PIPE MONUMENT
- VINYL "T" POST
- ⊗ WITNESS TREE