

PUBLIC LAND SURVEY MONUMENT RECORD

TYPE OF MONUMENT: HARRISON (BROKEN-TOP)
 ADAMS COUNTY COORDINATES, NAD 83 (1905)

N. 282240.999

E. 504404.249

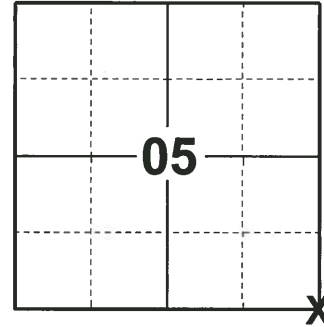
ELEVATION- - - - - DATUM - - - - -

FIELD WORK DATE: 11/21/2019

BASIS FOR MONUMENT LOCATION

1974 - PLS 1103 RAN EDM/TRANSIT TRAVERSE AROUND SECTION 8, BUT COULD FIND NO EVIDENCE OF THE ORIGINAL CORNER OR ANY REMONUMENTATION. RE-ESTABLISHED CORNER BY INTERSECTION THE DISTANCES AS GIVEN ON THE TWO CONCRETE WITNESS MONUMENTS, IN THE NORTHEAST AND NORTHWEST QUADRANTS OF THE INTERSECTION OF COUNTY TRUCK Z AND 18TH AVENUE.

2019 - PLS 2675 FOUND HARRISON (BROKEN-TOP) MONUMENT 24"± BELOW THE ROAD SURFACE, DID NOT RECOVER ANY EXISTING TIES OR WITNESSES DUE TO RECENT ROAD CONSTRUCTION AND UTILITY WORK. ACCEPTED THE HARRISON (BROKEN-TOP) MONUMENT AS THE CORNER LOCATION AND MEASURED TO 7 R/W MONUMENTS FOR TIES.



LOCATION
 (INDICATE CORNER BY "X")

SEAL:



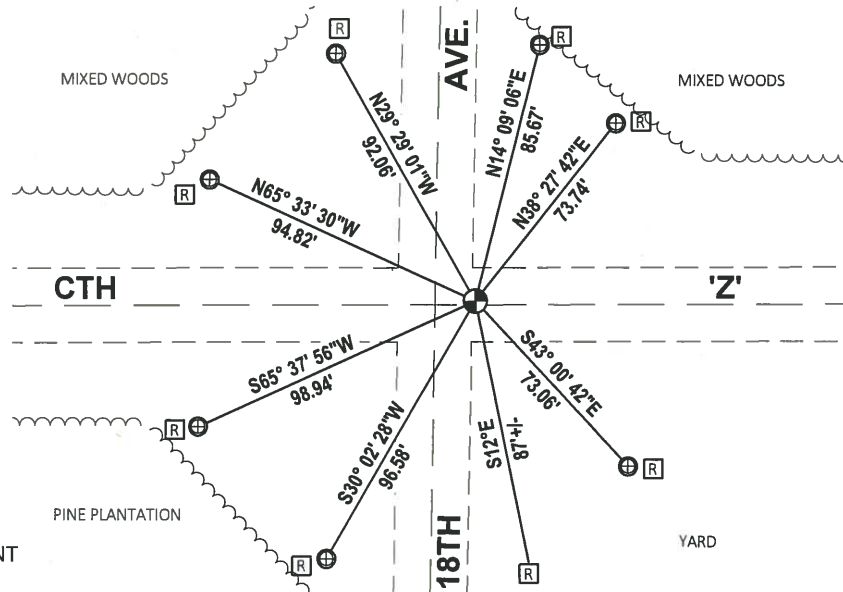
DATA SHOWN HERE ON THIS TIE SHEET IS CORRECT AND COMPLETE TO THE BEST OF MY KNOWLEDGE AND BELIEF.

PROFESSIONAL LAND SURVEYOR

DATE 1/9/2020

- TIE SKETCH

NOTE: THE CORNER FALLS 1'± NORTH OF CTH 'Z' CENTERLINE AND 12.7'± EAST OF 18TH AVE. CENTERLINE.



- ⊕ FOUND 1" O.D. IRON PIPE
- ⊕ FOUND HARRISON (BROKEN-TOP) MONUMENT
- Ⓜ RIGHT OF WAY GUARD POST

ADAMS COUNTY

Survey Monument Record

TYPE OF MONUMENT: 30" Harrison Standard

STATE PLANE COORDINATES: N _____
E _____

ELEVATION — M.S.L. DATUM: _____

THETA ANGLE: _____

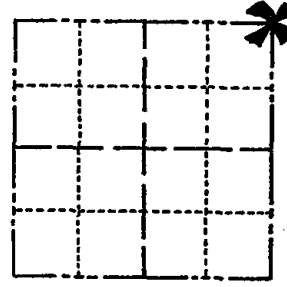
FIELD BOOK: _____ PAGE _____

CORNER NO. 637 ⁽²⁵⁾

SECTION 8

TOWN 19

RANGE 5



LOCATION
(Indicated by 'X')

SEAL:



BASIS FOR MONUMENT LOCATION

(Use reverse side if necessary)

Show info such as: History of corner, with reference to Vol. and pg, dates, surveyor; exact description of monument replaced; if location computed, by taped or EDM traverse; landowner remarks, etc.

Ran EDM/transit traverse around Section 8, but could find no evidence of the original corner or any remonumentation.

Re-established corner by intersection the distances as given on the two concrete witness monuments, in the Northeast and Northwest quadrants of the intersection of County Trunk Z and 18th Avenue.

Ok 4-12-84 DK-SS

OK 3-14-79 RN-SS
" 12-28-88 SS

L. GONE, 2-NEW TIES 2-11-94 - GR JG
OK 1-25-99 - JG

CERTIFIED CORRECT:

Dale C. Hagen
Registered Land Surveyor

DATE: December 24, 1974

TIE SKETCH OK 1-15-04 JG-JS

(Show at least four ties) OK 1-26-09 MS-SS

NOTE

Tie in tree to nail in disc.

