

PUBLIC LAND SURVEY MONUMENT RECORD

TYPE OF MONUMENT: HARRISON (BROKEN-TOP)
 ADAMS COUNTY COORDINATES, NAD 83 (1905)

N. 282230.243

E. 509673.237

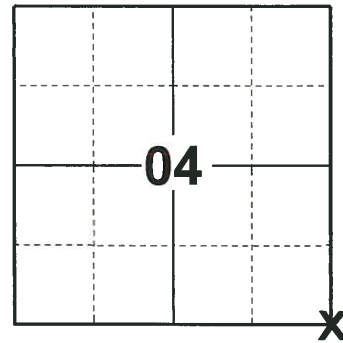
ELEVATION- - - - DATUM - - - -

FIELD WORK DATE: 10/01/2019

BASIS FOR MONUMENT LOCATION

1976 - PLS 1267 CHECKED ADAMS COUNTY SURVEY RECORDS AND NO RESURVEYS WERE ON FILE WHICH WERE PERTINENT TO THIS CORNER. FOUND AN OLD RAILROAD BRIDGE SPIKE 18" LONG DOWN 10" BELOW SURFACE. ACCEPTED AS CORNER AND MONUMENTED SAME. EDM TRAVERSE.

2019 - PLS 2675 FOUND HARRISON (BROKEN-TOP) MONUMENT 12"± BELOW THE ROAD SURFACE AND 2 TIES. THE MONUMENT AGREES WITH BOTH TIES. ACCEPTED THE HARRISON (BROKEN-TOP) MONUMENT AS THE CORNER LOCATION. SET 2 NEW TIES AND MEASURED TO THE EXISTING R/W MONUMENTS AND EXISTING TIES.



LOCATION

(INDICATE CORNER BY "X")

SEAL:



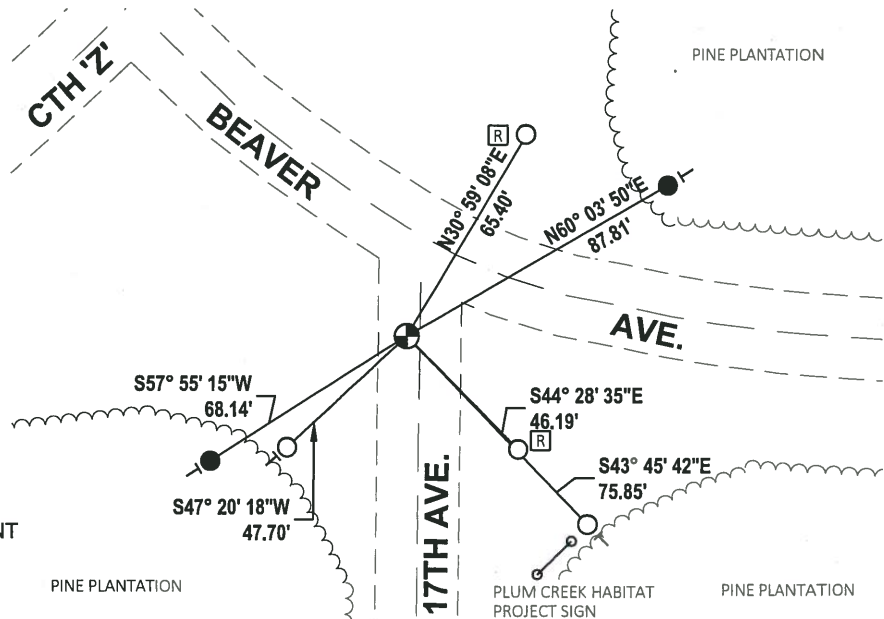
DATA SHOWN HERE ON THIS TIE SHEET IS CORRECT AND COMPLETE TO THE BEST OF MY KNOWLEDGE AND BELIEF.

PROFESSIONAL LAND SURVEYOR

DATE 11/25/19

TIE SKETCH

NOTE: THE CORNER FALLS 3.8'± WEST OF 17TH AVE. CENTERLINE AND 31.8'± SOUTH OF BEAVER AVE. CENTERLINE.

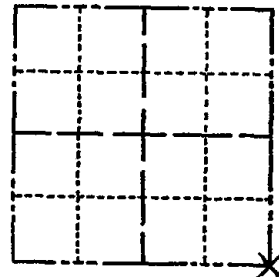


- SET 3/4" x 18" IRON REBAR, 1.50#/FT
- FOUND 3/4" IRON ROD
- ⊕ FOUND HARRISON (BROKEN-TOP) MONUMENT
- VINYL "T" POST
- Ⓜ RIGHT OF WAY GUARD POST

ADAMS COUNTY
Survey Monument Record

CORNER NO. 27
 SECTION 4
 TOWN 19N
 RANGE 5E

TYPE OF MONUMENT: STANDARD 30" HARRISON
 STATE PLANE COORDINATES: N _____
 E _____
 ELEVATION — M.S.L. DATUM: _____
 THETA ANGLE: _____
 FIELD BOOK: _____ PAGE _____



LOCATION
 (Indicated by 'X')

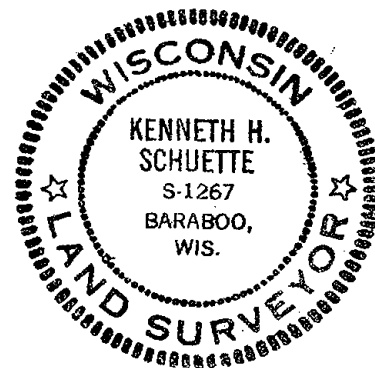
BASIS FOR MONUMENT LOCATION

(Use reverse side if necessary)

Show info such as: History of corner, with reference to Vol. and pg, dates, surveyor; exact description of monument replaced; if location computed, by taped or EDM traverse; landowner remarks, etc.

CHECKED ADAMS COUNTY SURVEY RECORDS AND NO RESURVEYS WERE ON FILE WHICH WERE PERTINENT TO THIS CORNER. FOUND AN OLD RAILROAD BRIDGE SPIKE 18" LONG DOWN 10" BELOW SURFACE. ACCEPTED AS CORNER AND MONUMENTED SAME. EDM TRAVERSE

SEAL:



OK 4-12-84 DK-SS
 " 12-28-88 SS
 OK 2-25-94 CR-JG
 2-GONE, 2-NEW 2-8-99 - JG-SS
 1-GONE, 3-NEW, 1-13-04 - JG

CERTIFIED CORRECT:

Ken Schuette
 Registered Land Surveyor

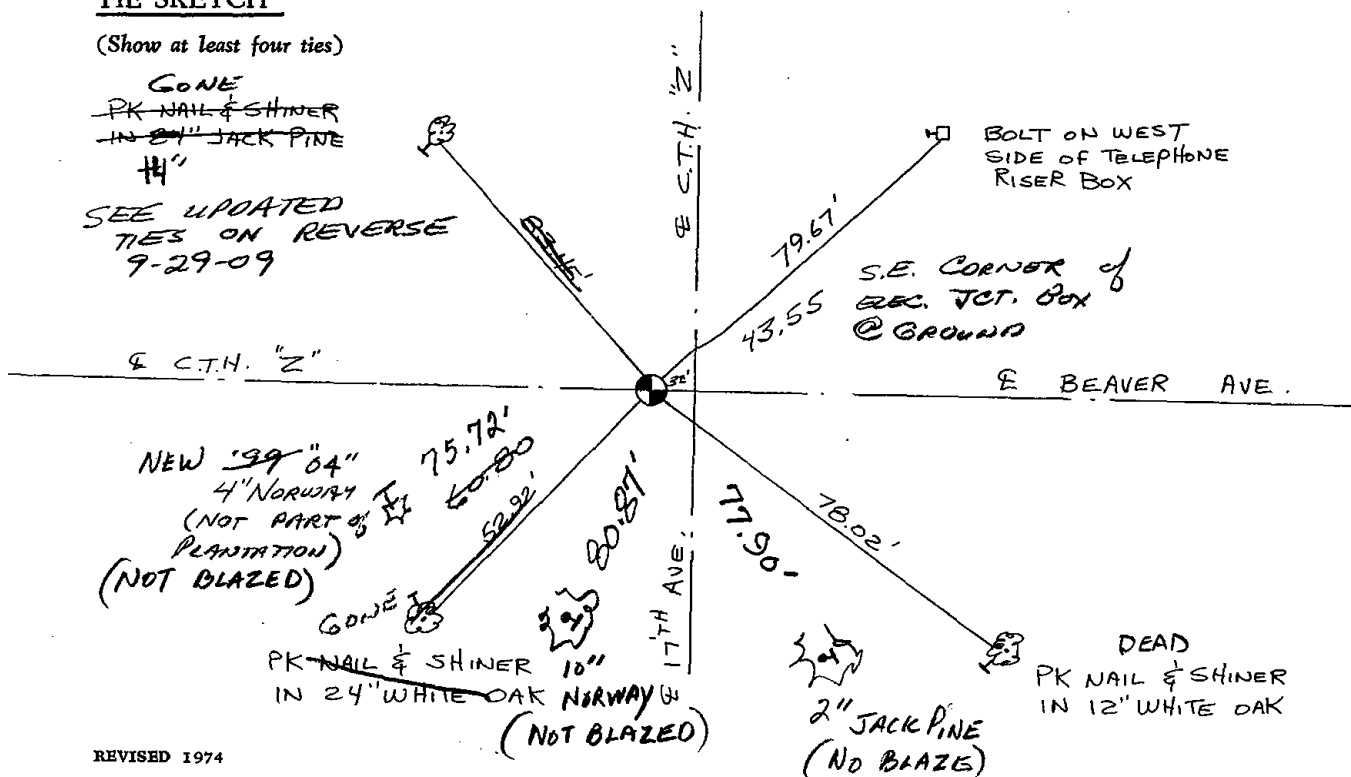
DATE: 30 DEC 1976

TIE SKETCH

(Show at least four ties)

~~GONE~~
~~PK NAIL & SHINER~~
~~IN 24" JACK PINE~~
~~#4"~~

SEE UPDATED TIES ON REVERSE 9-29-09



R

D.O.T. CONTROL
POINT - BRASS
CAP IN CONCRETE

151.7

N.E. CORNER
ELECTRIC BOX
"SP 185"

$\pm N 49^{\circ} W$
141.41'

$\pm N 45^{\circ} E$
46.93'

TIES MEASURED
TO PCON

145.7'

$\pm S 46^{\circ} W$
47.76'

68.7'
 $\pm S 45^{\circ} E$
75.82'

$\frac{3}{4}$ " ROD SET '09

90.4

$\frac{3}{4}$ " ROD SET '09

