

## PUBLIC LAND SURVEY MONUMENT RECORD

TYPE OF MONUMENT: HARRISON  
 ADAMS COUNTY COORDINATES, NAD 83 (1905)

N. 282220.397

E. 512324.540

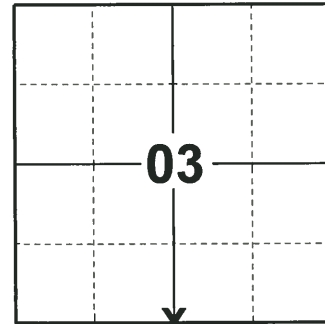
ELEVATION- - - - - DATUM - - - - -

FIELD WORK DATE: 10/01/2019

### BASIS FOR MONUMENT LOCATION

1980 - PLS 1478 SET MONUMENT EQUIDISTANT AND ON LINE BETWEEN ADJACENT SECTION CORNERS. NO EXCAVATION WAS MADE DUE TO CUT IN ROADWAY.

2019 - PLS 2675 FOUND HARRISON MONUMENT 8"± BELOW THE ROAD SURFACE AND DID NOT RECOVER ANY TIES OR WITNESSES. THE MONUMENT IS ONLINE AND EQUIDISTANT BETWEEN ADJACENT CORNERS. ACCEPTED THE HARRISON MONUMENT AS THE CORNER LOCATION AND SET 4 NEW TIES.



**LOCATION**

(INDICATE CORNER BY "X")

SEAL:



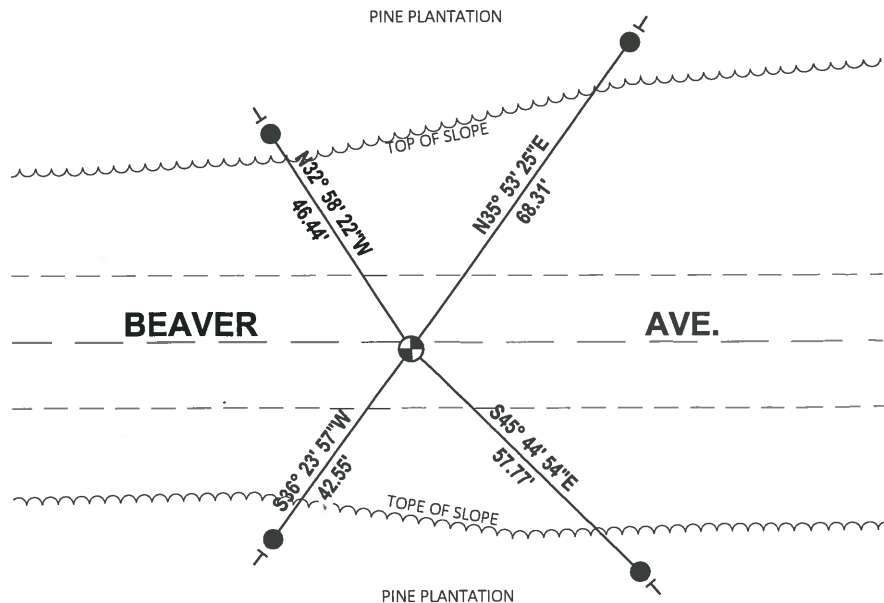
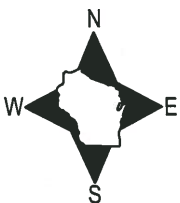
DATA SHOWN HERE ON THIS TIE SHEET IS CORRECT AND COMPLETE TO THE BEST OF MY KNOWLEDGE AND BELIEF.

PROFESSIONAL LAND SURVEYOR

DATE 11/25/19

### - TIE SKETCH

NOTE: THE CORNER FALLS 1.4"± SOUTH OF BEAVER AVE. CENTERLINE.



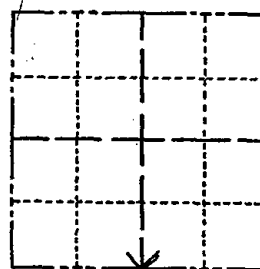
- SET 3/4" x 18" IRON REBAR, 1.50#/FT
- ⊙ FOUND HARRISON MONUMENT
- VINYL "T" POST

# Government Land Corner Certificate

Adams County  
 TYPE OF MONUMENT: Harrison Monument  
 STATE PLANE COORDINATES: N \_\_\_\_\_  
 E \_\_\_\_\_  
 ELEVATION — M.S.L. DATUM: \_\_\_\_\_  
 THETA ANGLE: \_\_\_\_\_  
 FIELD BOOK: 83 PAGE 68  
 DRAWN BY: Greg Rhinehart

CORNER NO. 28  
 SECTION 3  
 TOWN 19  
 RANGE 5

RRS to  
 be replaced  
 in Spring '80



LOCATION  
 (Indicated by 'X')

## BASIS FOR MONUMENT LOCATION

Show info such as: History of corner, with reference to Vol. and pg., dates, surveyor; exact description of monument replaced; if location computed, by taped or EDM traverse; landowner remarks, etc. (Use reverse side if necessary)

Set monument equidistant  $\frac{1}{2}$  on line between adjacent section corners.

No excavation was made due to cut in roadway.

OK - 7-17-84 MK-DK  
 " 12-28-88 SS  
 OK 1 MARCH 74 CR-JG  
 OK 2-8-99 -JG-SS  
 1-NEW 1-13-04 -JG  
 OK 2-12-09 SS

SEAL:



DATA SHOWN HERE ON  
 CERTIFIED CORRECT:

Gregory P Rhinehart  
 Registered Land Surveyor

DATE: 2-20-80

## TIE SKETCH

Show at least four ties, also fence lines, roads, topo, size and type of witness trees and if off road - best way to arrive at corner.

