

PUBLIC LAND SURVEY MONUMENT RECORD

TYPE OF MONUMENT: HARRISON (BROKEN-TOP)
ADAMS COUNTY COORDINATES, NAD 83 (1905)

N. 282210.733

E. 514975.808

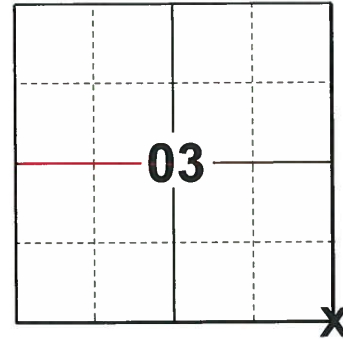
ELEVATION- - - - - DATUM - - - - -

FIELD WORK DATE: 10/01/2019

BASIS FOR MONUMENT LOCATION

1979 - PLS 878 EXCAVATED WITH BACKHOE, FOUND DEFINITE REMAINS OF BURNED POST. REPLACED SAME WITH HARRISON AND VERIFIED LOCATION WITH EDM TRAVERSE. POST SET PER VOLUME 3 OF OLD FIELD NOTES, PAGE 37.

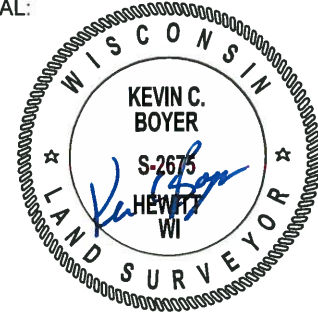
2019 - PLS 2675 FOUND HARRISON (BROKEN-TOP) MONUMENT 8"± BELOW THE ROAD SURFACE AND 3 WITNESSES. THE MONUMENT AGREES WITH ALL 3 WITNESSES. ACCEPTED THE HARRISON (BROKEN-TOP) AS THE CORNER LOCATION. SET 4 NEW TIES AND MEASURED TO THE EXISTING WITNESSES.



LOCATION

(INDICATE CORNER BY "X")

SEAL:



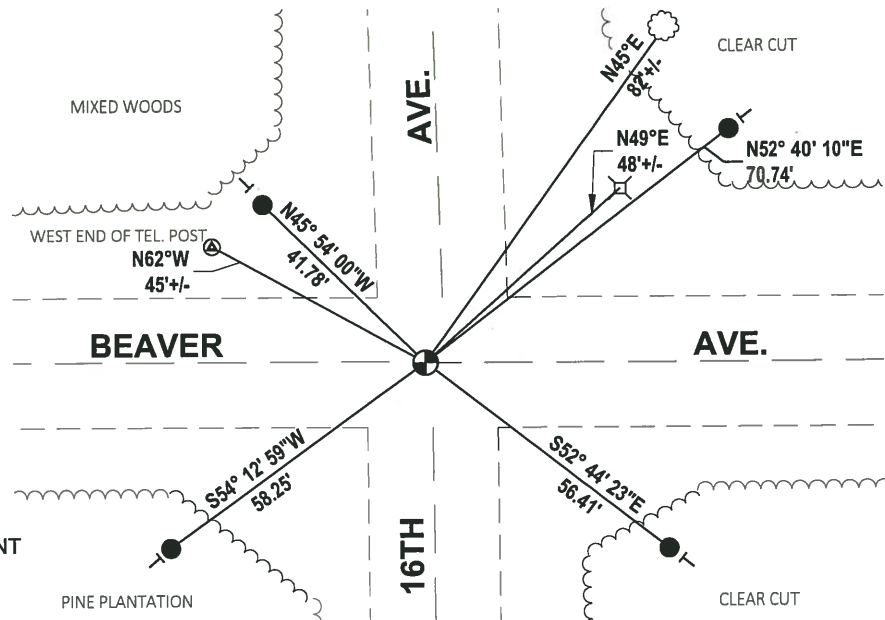
DATA SHOWN HERE ON THIS TIE SHEET IS CORRECT AND COMPLETE TO THE BEST OF MY KNOWLEDGE AND BELIEF.

PROFESSIONAL LAND SURVEYOR

DATE 11/25/19

TIE SKETCH

NOTE: THE CORNER FALLS ON THE CENTERLINE OF BEAVER AVE. AND 3.6"± WEST OF 16TH AVE. CENTERLINE.



- SET 3/4" x 18" IRON REBAR, 1.50#/FT
- ⊕ FOUND HARRISON (BROKEN-TOP) MONUMENT
- | VINYL "T" POST
- ☁ WITNESS TREE

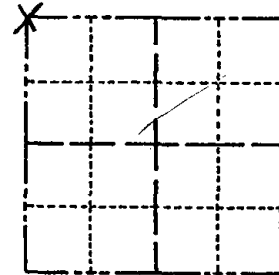
Government Land Corner Certificate

Adams County

TYPE OF MONUMENT: Harrison
 STATE PLANE COORDINATES: N _____
 E _____

ELEVATION — M.S.L. DATUM: _____
 THETA ANGLE: _____
 FIELD BOOK: 74 (102) PAGE 112 (53)
 DRAWN BY: N.J.

CORNER NO. 29
 SECTION 11
 TOWN 19
 RANGE 5



LOCATION
(Indicated by 'X')

BASIS FOR MONUMENT LOCATION

Show info such as: History of corner, with reference to Vol. and pg., dates, surveyor; exact description of monument replaced; if location computed, by taped or EDM traverse; landowner remarks, etc. (Use reverse side if necessary)

Excavated with backhoe, found definite remains of burned post. Replaced same with Harrison and verified location with EDM traverse. Post set per Vol 3 of old field notes, page 37.

Ok 4-12-84 SS-DK
 12-28-89 SS
 OK 2-25-94 CR-JG
 2-GONE, 2-NEW, TOP BROKEN OFF, 2-12-98-JG
 OK 12-31-02-JG
 2 NEW TIES 2-12-09 SS

SEAL:



DATA SHOWN HERE ON
 CERTIFIED CORRECT:

Anthony B. Kiedrowski
 Registered Land Surveyor

DATE: 10/25/79

TIE SKETCH

Show at least four ties, also fence lines, roads, topo, size and type of witness trees' and if off road - best way to arrive at corner.

