

PUBLIC LAND SURVEY MONUMENT RECORD

TYPE OF MONUMENT: HARRISON
 ADAMS COUNTY COORDINATES, NAD 83 (1905)

N. 282228.275

E. 520292.004

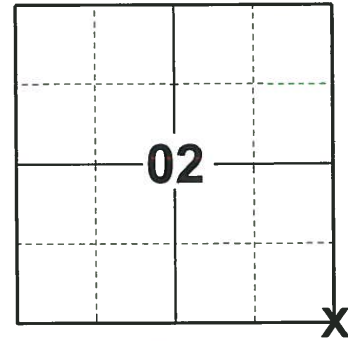
ELEVATION- - - - DATUM - - - -

FIELD WORK DATE: 09/30/2019

BASIS FOR MONUMENT LOCATION

1980 - PLS 1478 SET BY DOUBLE PROPORTIONATE MEASUREMENT METHOD BETWEEN THE W $\frac{1}{2}$ CORNER 1, SE CORNER 11, SE CORNER 1, AND THE NW CORNER 11 ALL IN 19-5. ABK EXCAVATED AT THE CENTERLINES INTERSECTION AND FOUND NOTHING. SO RECORD OF ANY MONUMENTATION SUBSEQUENT TO THE ORIGINAL WAS FOUND.

2019 - PLS 2675 FOUND HARRISON MONUMENT 2'± BELOW THE ROAD SURFACE, 2 TIES AND 2 WITNESSES. THE MONUMENT AGREES WITH ALL THE EXISTING TIES AND WITNESSES. ACCEPTED THE HARRISON AS THE CORNER LOCATION. SET 2 NEW TIES AND MEASURED TO THE EXISTING TIES AND WITNESSES.



LOCATION
 (INDICATE CORNER BY "X")

SEAL:



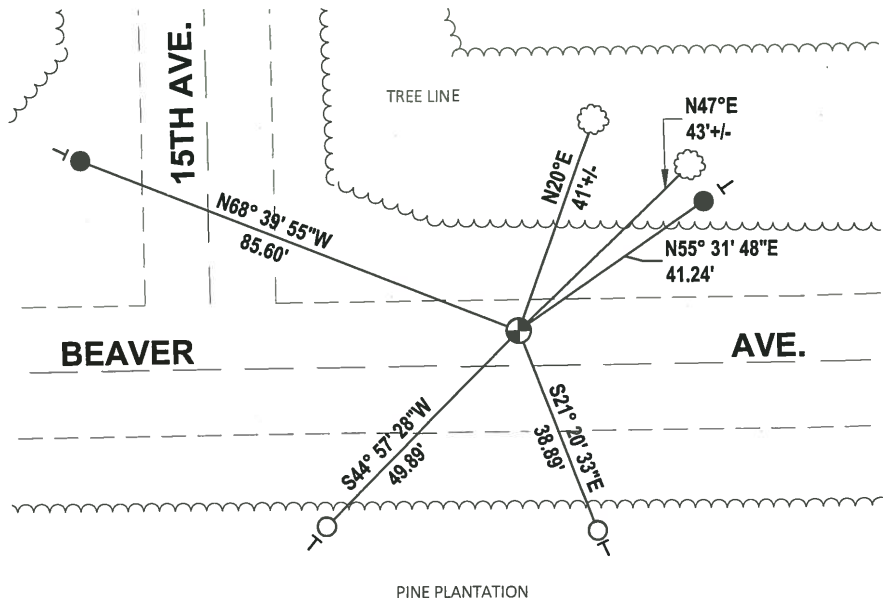
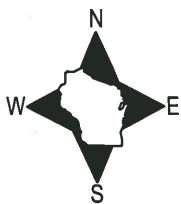
DATA SHOWN HERE ON THIS TIE SHEET IS CORRECT AND COMPLETE TO THE BEST OF MY KNOWLEDGE AND BELIEF.

PROFESSIONAL LAND SURVEYOR

DATE 11/25/19

TIE SKETCH

NOTE: THE MONUMENT FALLS 6.3'± NORTH OF BEAVER AVE. CENTERLINE.



- SET 3/4" x 18" IRON REBAR, 1.50#/FT
- FOUND 3/4" IRON ROD
- ⊕ FOUND HARRISON MONUMENT
- ┆ VINYL "T" POST
- ☼ WITNESS TREE

Government Land Corner Certificate

SET BY: 9/21/80

RN-SS

CORNER NO. 31
 SECTION 1
 TOWN 19
 RANGE 5

ADAMS County

TYPE OF MONUMENT: HARRISON STANDARD *Present RR Spike*

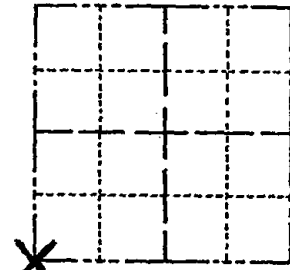
STATE PLANE COORDINATES: N _____ *to be replaced*
 E _____ *Spring '80*

ELEVATION — M.S.L. DATUM: _____

THETA ANGLE: _____

FIELD BOOK: 83 PAGE 36

DRAWN BY: R. NUBER



LOCATION
(Indicated by 'X')

SEAL:



BASIS FOR MONUMENT LOCATION

Show info such as: History of corner, with reference to Vol. and pg., dates, surveyor; exact description of monument replaced; if location computed, by taped or EDM traverse; landowner remarks, etc. (Use reverse side if necessary)

Set by double proportionate measurement method between the $\frac{1}{4}$ Corner 1, SE Corner 11, SE Corner 1, and the NW corner 11 all in 19-5. ABK excavated at the centerlines intersection and found nothing.

No record of any monumentation subsequent to the original was found.

- Ok 4-17-84 DK-SS
- OK 1 MARCH 94 CR JA
- OK, 2-12-98 - JG
- OK, 12-31-02 - JG
- 3 NEW TIES 9-29-09 SS

DATA SHOWN HERE ON CERTIFIED CORRECT:

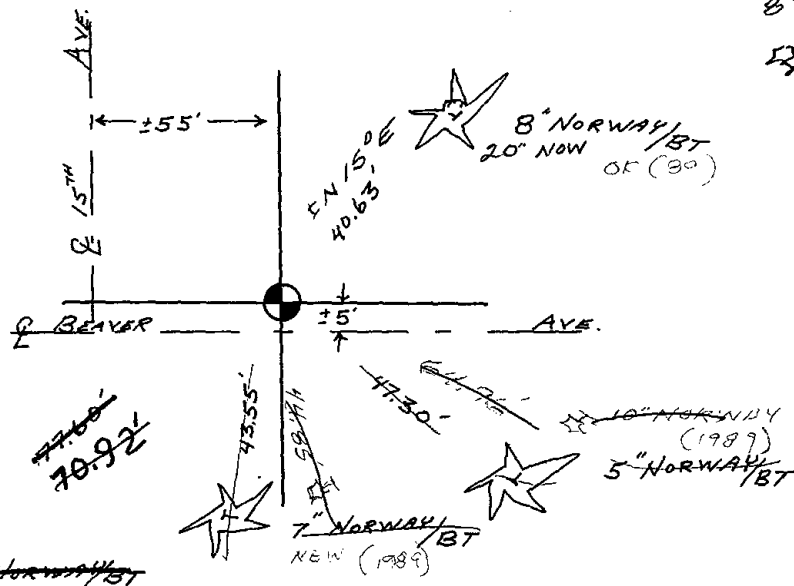
Gregory P Rhinehart
 Registered Land Surveyor

DATE: 1/8/1980

TIE SKETCH

Show at least four ties, also fence lines, roads, topo, size and type of witness trees and if off road - best way to arrive at corner.

$\frac{3}{4}$ " Roo SET 9-29-09
 $\pm S 45^\circ W$ 50.00'
 $\pm S 20^\circ E$ 38.88'



New 84 Norway OK (81)

*8" JACK PINE '09
 IN 50° E 43.45'*

