

PUBLIC LAND SURVEY MONUMENT RECORD

TYPE OF MONUMENT: HARRISON
ADAMS COUNTY COORDINATES, NAD 83 (1905)

N. 279594.883

E. 499028.939

ELEVATION- - - - - DATUM - - - - -

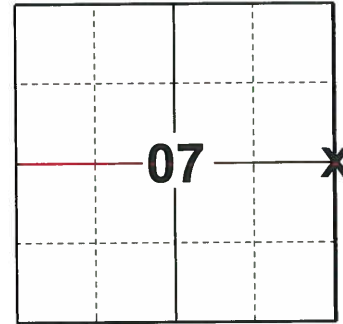
FIELD WORK DATE: 10/15/2019

BASIS FOR MONUMENT LOCATION

1974 - PLS 1103 FOUND A NAIL SET BY MIDSTATES AND ASSOCIATES AND ACCEPTED THE LOCATION BECAUSE IT FIT THE OTHER SECTION DATA. SET A HARRISON MONUMENT IN ITS PLACE.

2010 - PLS 1473 THE HARRISON MONUMENT WAS FOUND 1.0' UNDER THE ROAD SURFACE, SO I SET A 5" GALVANIZED LANDSCAPE SPIKE OVER THE TOP OF THE MONUMENT.

2019 - PLS 2675 FOUND SPIKE IN THE ROAD SURFACE, REMOVED, AND FOUND HARRISON MONUMENT 12"± BELOW THE ROAD SURFACE AND 3 TIES. THE MONUMENT AGREES WITH ALL 3 TIES. ACCEPTED THE HARRISON MONUMENT AS THE CORNER LOCATION. SET 2 NEW TIES AND MEASURED TO THE EXISTING TIES.



LOCATION
(INDICATE CORNER BY "X")

SEAL:



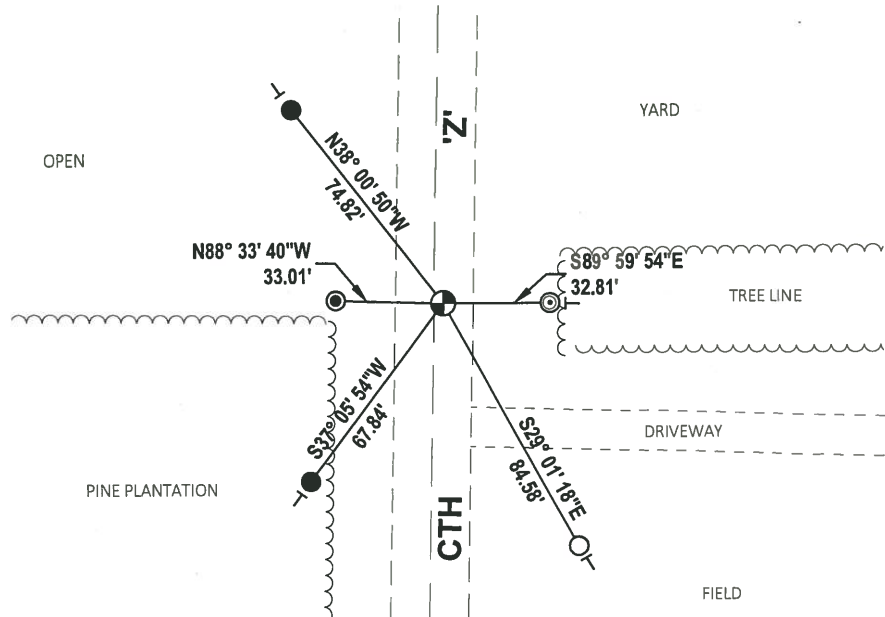
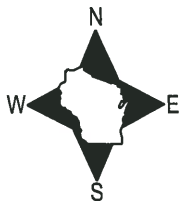
DATA SHOWN HERE ON THIS TIE SHEET IS CORRECT AND COMPLETE TO THE BEST OF MY KNOWLEDGE AND BELIEF.

PROFESSIONAL LAND SURVEYOR

DATE 11/25/19

TIE SKETCH

NOTE: THE MONUMENT FALLS 3'± EAST OF CTH 'Z' CENTERLINE.

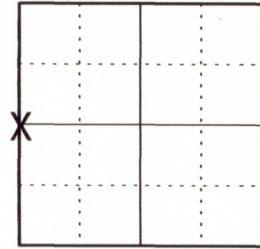


- SET 3/4" x 18" IRON REBAR, 1.50#/FT
- FOUND 3/4" IRON ROD
- ⊙ FOUND 1-1/4" O.D. IRON ROD
- ⊙ FOUND 2-3/8" O.D. IRON PIPE
- ⊕ FOUND HARRISON MONUMENT
- ┆ VINYL "T" POST

U.S PUBLIC LAND SURVEY MONUMENT RECORD ADAMS COUNTY, WISCONSIN

CORNER NO. 635
SECTION 8
TOWN 19 N
RANGE 5 E

TYPE OF MONUMENT: 5" GALVANIZED LANDSCAPING SPIKE OVER HARRISON MON.
ADAMS COUNTY COORDINATES:
NORTH: 279594.91'
EAST: 499028.92'



LOCATION

ELEVATION _ MSL DATUM: NOT APPLICABLE
THETA ANGLE: NOT APPLICABLE
FIELD BOOK:
DRAWN BY: DANIEL MARKS

BASIS FOR MONUMENT LOCATION

On December 24, 1974 Dale C. Hagen found a nail set by Midstates and Associates and accepted the location because it fit the other section data. Hagen set a Harrison monument in its place. The Harrison monument was set 1.0' under the surface so I set a 5" galvanized landscape spike over the top of the monument.



SEAL

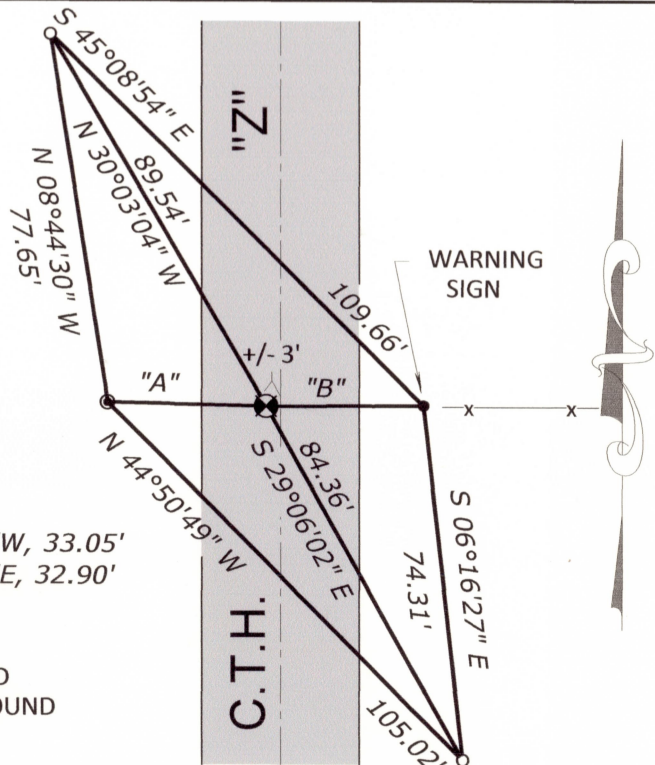


DATA SHOWN HEREON CERTIFIED CORRECT:

Daniel Marks

REGISTERED LAND SURVEYOR
DATE: 7-28-2010

TIE SKETCH: No Scale



MAINTENANCE RECORD

DATE	INIT.	REMARKS

"A" = N88°41'33"W, 33.05'
"B" = N89°43'01"E, 32.90'

- 3/4" IRON ROD SET
- 2" IRON PIPE FOUND
- ◎ 1 1/4" IRON ROD FOUND