

## PUBLIC LAND SURVEY MONUMENT RECORD

TYPE OF MONUMENT: 2-3/8" O.D. IRON PIPE W/ALUMINUM CAP  
 ADAMS COUNTY COORDINATES, NAD 83 (1905)

N. 280500.168

E. 499051.582

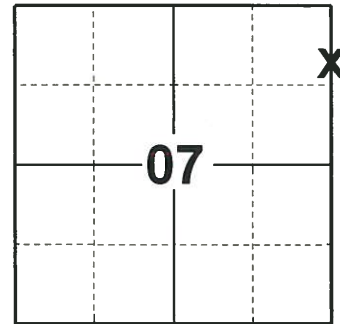
ELEVATION- - - - - DATUM - - - - -

FIELD WORK DATE: 10/15/2019

### BASIS FOR MONUMENT LOCATION

1983 - PLS 1444 THIS MEANDER CORNER WAS SET BY EXTENDING THE WEST LINE OF SECTION 8 NORTHWARD TO THE WATERS EDGE.

2019 - PLS 2675 FOUND 2-3/8" O.D. IRON PIPE WITH ALUMINUM CAP MONUMENT 2" BELOW THE GROUND AND 1 WITNESS TREE. THE MONUMENT AGREES WITH THE WITNESS. ACCEPTED THE 2-3/8" O.D. IRON PIPE WITH ALUMINUM CAP AS THE MEANDER CORNER LOCATION. SET 4 NEW TIES AND MEASURED TO THE EXISTING WITNESSES.



### LOCATION

(INDICATE CORNER BY "X")

SEAL:

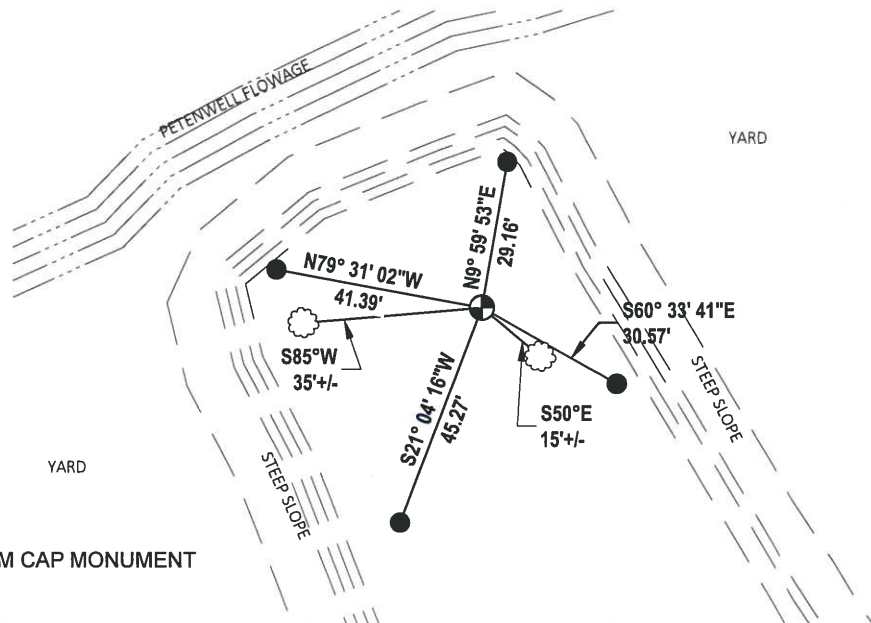
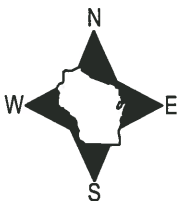


DATA SHOWN HERE ON THIS TIE SHEET IS CORRECT AND COMPLETE TO THE BEST OF MY KNOWLEDGE AND BELIEF.

PROFESSIONAL LAND SURVEYOR

DATE 11/25/19

### - TIE SKETCH



- SET 3/4" x 18" IRON REBAR, 1.50#/FT
- ⊕ FOUND 2-3/8" O.D. IRON PIPE WITH ALUMINUM CAP MONUMENT
- ☁ WITNESS TREE