

PUBLIC LAND SURVEY MONUMENT RECORD

TYPE OF MONUMENT: 1-1/4" IRON ROD
 ADAMS COUNTY COORDINATES, NAD 83 (1905)

N. 279580.351

E. 509629.443

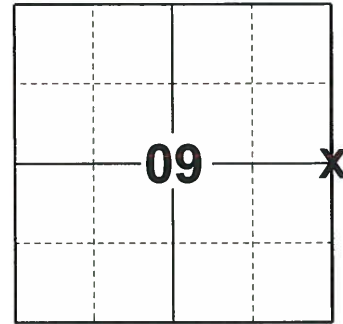
ELEVATION- - - - DATUM - - - -

FIELD WORK DATE: 10/09/2019

BASIS FOR MONUMENT LOCATION

1977 - PLS 1103 RAN EDM/T2 TRAVERSE AROUND SECTION 9 TO DETERMINE SEARCH AREA FOR INVESTIGATION. EXCAVATION WITH BACKHOE BY A.B. KIEDROWSKI, ADAMS COUNTY SURVEYOR, YIELDED NO EVIDENCE OF THE ORIGINAL CORNER OR ANY REMONUMENTATION. COULD FIND NO EVIDENCE OF WITNESS TREES. RELOCATED CORNER BY SINGLE PROPORTIONATE MEASURE BETWEEN ADJACENT SECTION CORNERS. SET HARRISON MONUMENT JUNE 15, 1977.

2019 - PLS 2675 FOUND 1-1/4" IRON ROD MONUMENT FLUSH WITH THE ROAD SURFACE, 3 TIES, AND 1 WITNESS. ALL TIES AND WITNESS AGREE WITH THE MONUMENT. ACCEPTED THE 1-1/4" IRON ROD MONUMENT AS THE CORNER LOCATION. SET 1 NEW TIE AND MEASURED TO THE EXISTING TIES AND WITNESS.



LOCATION
 (INDICATE CORNER BY "X")

SEAL:



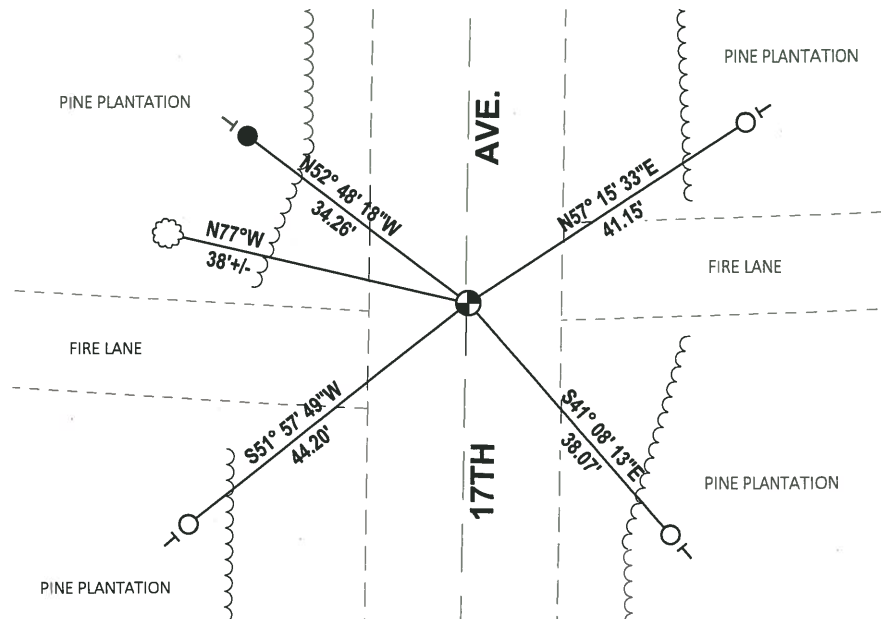
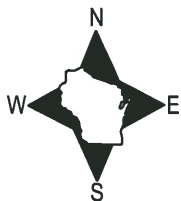
DATA SHOWN HERE ON THIS TIE SHEET IS CORRECT AND COMPLETE TO THE BEST OF MY KNOWLEDGE AND BELIEF.

PROFESSIONAL LAND SURVEYOR

DATE 11/25/19

TIE SKETCH

NOTE: THE CORNER FALLS ON THE CENTERLINE OF 17TH AVE.



- SET 3/4" x 18" IRON REBAR, 1.50#/FT
- FOUND 3/4" IRON ROD
- ⊙ FOUND 1-1/4" IRON ROD MONUMENT
- | VINYL "T" POST
- ☼ WITNESS TREE

ADAMS COUNTY

Survey Monument Record

TYPE OF MONUMENT: HARRISON STANDARD

STATE PLANE COORDINATES: N _____

E _____

ELEVATION — M.S.L. DATUM: _____

THETA ANGLE: _____

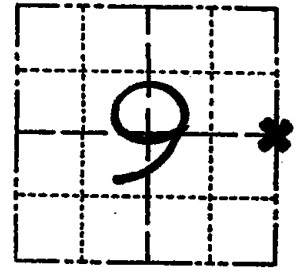
FIELD BOOK: 54 PAGE 11

CORNER NO. 37

SECTION 9

TOWN 19

RANGE 5



LOCATION
(Indicated by 'X')

SEAL:



BASIS FOR MONUMENT LOCATION

(Use reverse side if necessary)

Show info such as: History of corner, with reference to Vol. and pg, dates, surveyor; exact description of monument replaced; if location computed, by taped or EDM traverse; landowner remarks, etc.

Ran EDM/T2 traverse around Section 9 to determine search area for investigation.

Excavation with back-hoe by Anthony B. Kiedrowski, Adams County Surveyor, yielded no evidence of the original corner or any remonumentation. Could find no evidence of witness trees.

Relocated corner by single proportionate measure between adjacent section corners.

Set Harrison monument June 15, 1977.

- OK 3-20-79 PN-SS
- OK 4-17-84 DK-SS
- " 12-28-88 SS
- 3 NEW TIES 2-25-94 CR-JG
- OK 1-25-99-JG

CERTIFIED CORRECT:

Dale C Hagen
Registered Land Surveyor

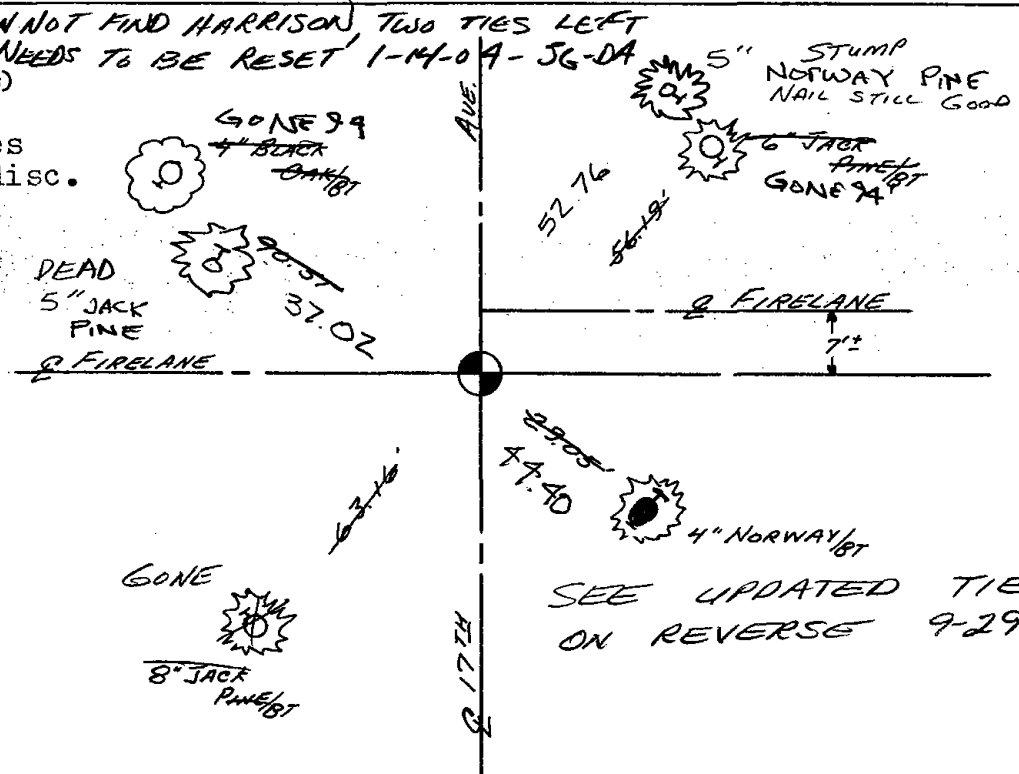
DATE: August 12, 1977

TIE SKETCH CAN NOT FIND HARRISON, TWO TIES LEFT
NEEDS TO BE RESET 1-M-O-A-56-DA

(Show at least four ties)

NOTE

Ties in trees
to nail in disc.



SEE UPDATED TIES
ON REVERSE 9-29-09



SET 1 1/4" ROD BASED ON
KIEDROWSKI ENG. SECTION
SUMMARY IN SECTION 10
DATED SEPT '81

10" BLACK
OAK

± N 77° W
38.12

± 36'

3/4" ROD
SET

± S 51° W
44.26

68.9'

± N 56° E
41.12

3/4" ROD SET

± 51'

6" NORWAY

± S 50° E
44.50

