

## PUBLIC LAND SURVEY MONUMENT RECORD

TYPE OF MONUMENT: HARRISON  
 ADAMS COUNTY COORDINATES, NAD 83 (1905)

N. 279565.279

E. 514951.899

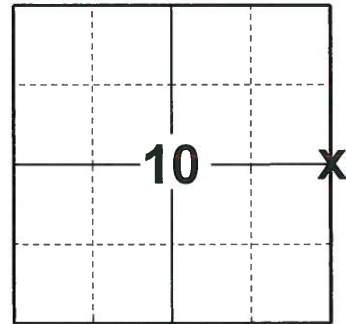
ELEVATION- - - - - DATUM - - - - -

FIELD WORK DATE: 10/08/2019

### BASIS FOR MONUMENT LOCATION

1979 - PLS 878 SCRAPPED OFF ENTIRE INTERSECTION OF 16TH AVE AND FIRE LANE. FOUND BOTTOM 4" OF BURNED 3" DIA. POST. REPLACED SAME WITH HARRISON AND VERIFIED LOCATION BY EDM TRAVERSE. NO RECORD OF ANY RESURVEYS.

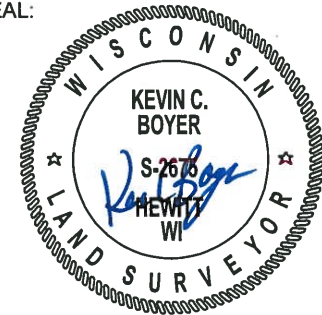
2019 - PLS 2675 FOUND HARRISON MONUMENT 6"± UNDER THE ROAD SURFACE AND 2 WITNESSES. WITNESS TREE LOCATIONS ARE UNKNOWN. ACCEPTED THE HARRISON MONUMENT AS THE CORNER LOCATION. SET 4 NEW TIES AND MEASURED TO THE WITNESS TREES.



### LOCATION

(INDICATE CORNER BY "X")

SEAL:



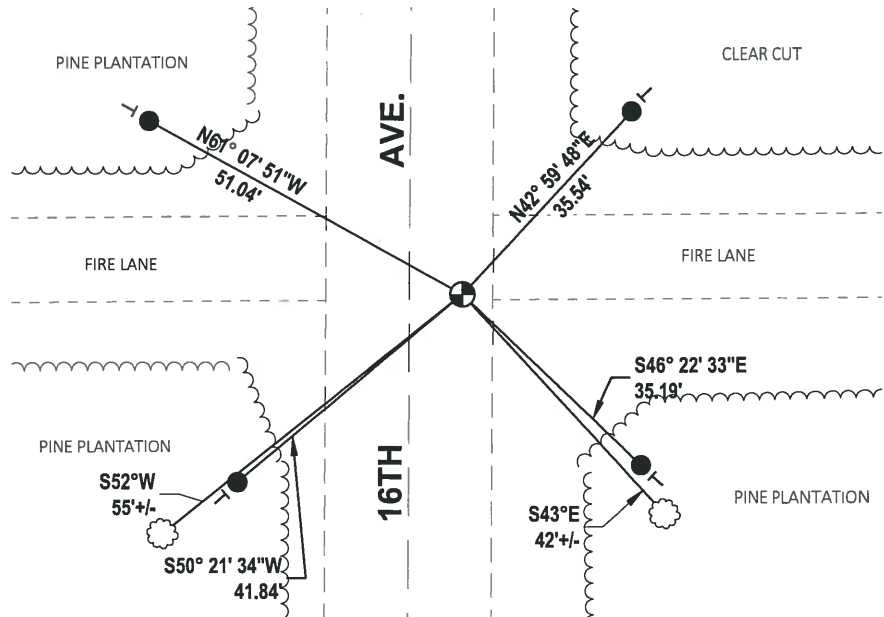
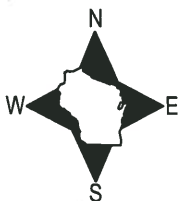
DATA SHOWN HERE ON THIS TIE SHEET IS CORRECT AND COMPLETE TO THE BEST OF MY KNOWLEDGE AND BELIEF.

PROFESSIONAL LAND SURVEYOR

DATE 11/25/19

### TIE SKETCH

NOTE: THE CORNER FALLS 7.6"± EAST OF 16TH AVE. CENTERLINE.



- SET 3/4" x 18" IRON REBAR, 1.50#/FT
- ⊕ FOUND HARRISON MONUMENT
- | VINYL "T" POST
- ☼ WITNESS TREE

# Government Land Corner Certificate

Adams County

TYPE OF MONUMENT: Harrison

STATE PLANE COORDINATES: N \_\_\_\_\_  
E \_\_\_\_\_

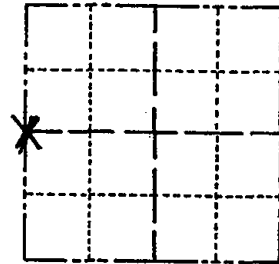
ELEVATION — M.S.L. DATUM: \_\_\_\_\_

THETA ANGLE: \_\_\_\_\_

FIELD BOOK: 74 (102) PAGE III (54)

DRAWN BY: N.J.

CORNER NO. 38  
SECTION 11  
TOWN 19  
RANGE 5



LOCATION  
(Indicated by 'X')

## BASIS FOR MONUMENT LOCATION

Show info such as: History of corner, with reference to Vol. and pg., dates, surveyor; exact description of monument replaced; if location computed, by taped or EDM traverse; landowner remarks, etc. (Use reverse side if necessary)

Scraped off entire intersection of 16th Ave and fire lane. Found bottom 4" of burned 3" dia post. Replaced same with Harrison and verified location by EDM traverse. No record of any resurveys.

SEAL:

Ok 4-17-84 DK-SS  
OK 1 MARCH 94 CR-JG  
1-GONE, 2-NEW, 2-12-98-JG  
OK, 1-02-03-JG



DATA SHOWN HERE ON  
CERTIFIED CORRECT:

*Anthony B. Kiedrowski*  
Registered Land Surveyor

DATE: 10/25/79

## TIE SKETCH

Show at least four ties, also fence lines, roads, topo, size and type of witness trees and if off road - best way to arrive at corner.

