

## PUBLIC LAND SURVEY MONUMENT RECORD

TYPE OF MONUMENT: HARRISON  
 ADAMS COUNTY COORDINATES, NAD 83 (1905)

N. 276944.232

E. 498962.598

ELEVATION- - - - - DATUM - - - - -

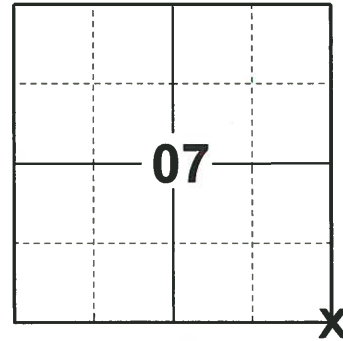
FIELD WORK DATE: 10/15/2019

### BASIS FOR MONUMENT LOCATION

1975 - PLS 1103 SET A HARRISON MONUMENT BY RETRACING A SURVEY DONE BY FRED ZIETLOW OF MIDSTATES AND ASSOCIATES.

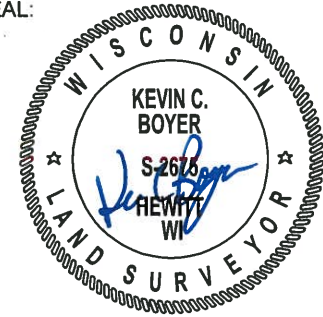
2010 - PLS 1473 FOUND HARRISON MONUMENT 2.3' UNDER THE SURFACE SO I SET A 5" GALVANIZED LANDSCAPING SPIKE ON TOP OF THE MONUMENT.

2019 - PLS 2675 FOUND SPIKE IN ROAD SURFACE, REMOVED, AND FOUND HARRISON 24"± BELOW THE ROAD SURFACE, 2 TIES, AND 1 WITNESS. THE MONUMENT AGREES WITH ALL TIES AND WITNESS. ACCEPTED THE HARRISON MONUMENT AS THE CORNER LOCATION. SET 2 NEW TIES AND MEASURED TO THE EXISTING TIES AND WITNESS.



**LOCATION**  
 (INDICATE CORNER BY "X")

SEAL:



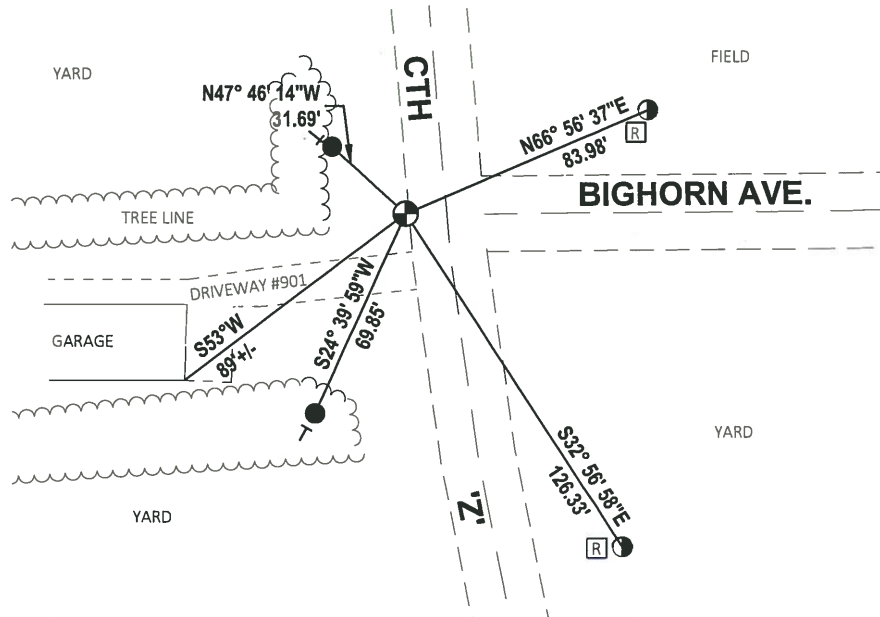
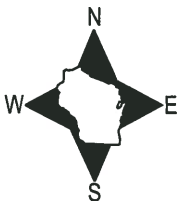
DATA SHOWN HERE ON THIS TIE SHEET IS CORRECT AND COMPLETE TO THE BEST OF MY KNOWLEDGE AND BELIEF.

PROFESSIONAL LAND SURVEYOR

DATE 11/25/19

### TIE SKETCH

NOTE: THE MONUMENT FALLS 13.5'± WEST OF CTH 'Z' CENTERLINE.



- SET 3/4" x 18" IRON REBAR, 1.50#/FT
- FOUND 5/8" IRON ROD
- ⊕ FOUND HARRISON MONUMENT
- | VINYL "T" POST
- Ⓜ RIGHT OF WAY GUARD POST

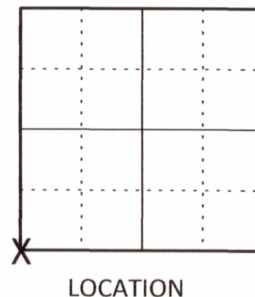
# U.S PUBLIC LAND SURVEY MONUMENT RECORD ADAMS COUNTY, WISCONSIN

CORNER NO. 16  
SECTION 8  
TOWN 19 N  
RANGE 5 E

43

TYPE OF MONUMENT: 5" GALVANIZED LANDSCAPING SPIKE OVER HARRISON MON.  
ADAMS COUNTY COORDINATES:  
NORTH: 276944.34'  
EAST: 498962.58'

ELEVATION \_ MSL DATUM: NOT APPLICABLE  
THETA ANGLE: NOT APPLICABLE  
FIELD BOOK:  
DRAWN BY: DANIEL MARKS



**BASIS FOR MONUMENT LOCATION**  
On May 5, 1975 Dale C. Hagen set a Harrison monument by retracing a survey done by Fred Zietlow of Midstates and Associates. Corner was buried 2.3' under the surface so I set a 5" galvanized landscaping spike on top of the monument.



SEAL



DATA SHOWN HEREON CERTIFIED CORRECT:

*Daniel Marks*

REGISTERED LAND SURVEYOR  
DATE: 7-28-2010

TIE SKETCH: No Scale

○ 5/8" IRON ROD FOUND AT RIGHT OF WAY POST

SE CORNER GARAGE

NE CORNER GARAGE

MAINTENANCE RECORD

DATE	INIT.	REMARKS

