

PUBLIC LAND SURVEY MONUMENT RECORD

TYPE OF MONUMENT: HARRISON
 ADAMS COUNTY COORDINATES, NAD 83 (1905)

N. 276943.730

E. 504290.709

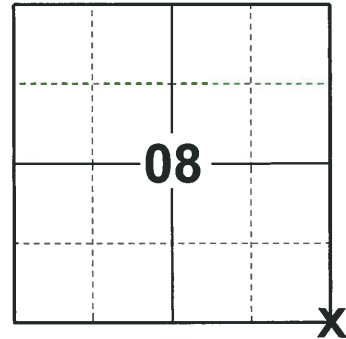
ELEVATION- - - - DATUM - - - -

FIELD WORK DATE: 10/14/2019

BASIS FOR MONUMENT LOCATION

1977 - PLS 1103 AFTER A FIELD INVESTIGATION OF THIS CORNER, WAS ABLE TO FIND A BEARING TREE FROM M.C. SMITH IN 1909, (8" PINE, S41E, 71 LINKS) WHICH THE COUNTY HAD NO NOTES FOR WHEN THE EXISTING HARRISON MONUMENT IN THIS INTERSECTION WAS SET. EXCAVATION WITH BACKHOE BY A.B. KIEDROWSKI, ADAMS COUNTY SURVEYOR, YIELDED A 7"X7"X10" POINTED SANDSTONE. SET HARRISON MONUMENT ON 5-4-1977 AT LOCATION OF STONE. DID NOT RELOCATE QUARTER CORNERS TO THE NORTH AND WEST, AS PREVIOUSLY SET PROPORTIONATE AND ON LINE.

2019 - PLS 2675 FOUND HARRISON MONUMENT 10"± BELOW THE ROAD SURFACE AND 1 WITNESS. THE MONUMENT AGREES WITH THE EXISTING WITNESS. ACCEPTED THE HARRISON MONUMENT AS THE CORNER LOCATION. SET 4 NEW TIES AND MEASURED TO THE EXISTING WITNESS.



LOCATION
 (INDICATE CORNER BY "X")

SEAL:



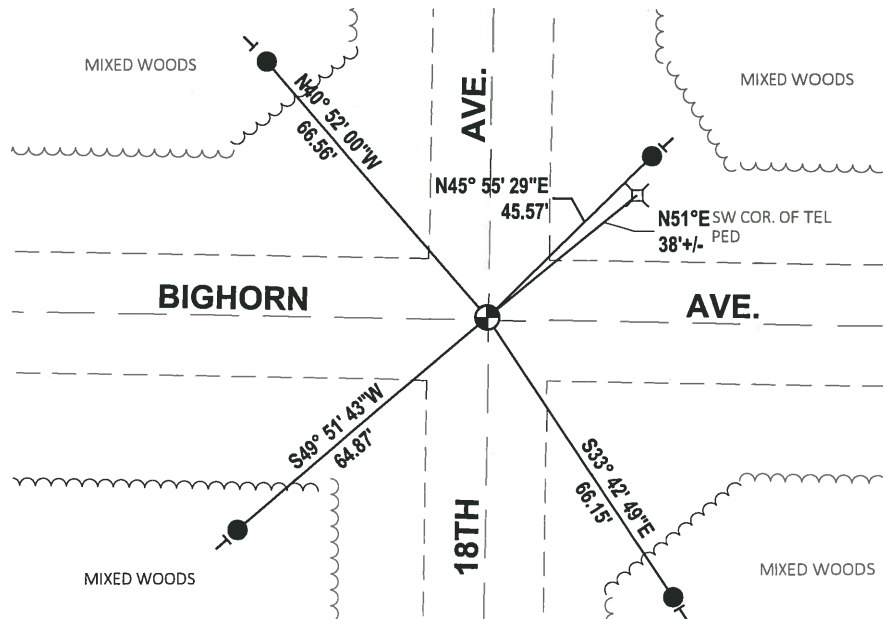
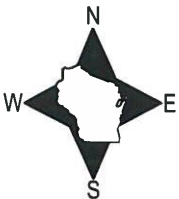
DATA SHOWN HERE ON THIS TIE SHEET IS CORRECT AND COMPLETE TO THE BEST OF MY KNOWLEDGE AND BELIEF.

PROFESSIONAL LAND SURVEYOR

DATE 11/25/19

TIE SKETCH

NOTE: THE CORNER FALLS ON THE INTERSECTION OF BIGHORN AVE. AND 18TH AVE. CENTERLINES.



- SET 3/4" x 18" IRON REBAR, 1.50#/FT
- ⊕ FOUND HARRISON MONUMENT
- ┆ VINYL "T" POST

