

## PUBLIC LAND SURVEY MONUMENT RECORD

TYPE OF MONUMENT: HARRISON  
 ADAMS COUNTY COORDINATES, NAD 83 (1905)

N. 276930.552

E. 509585.574

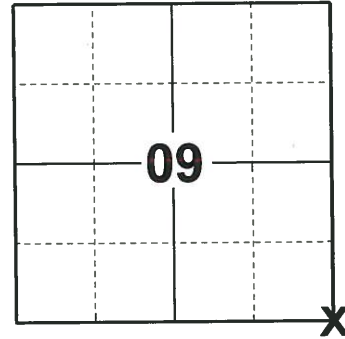
ELEVATION- - - - - DATUM - - - - -

FIELD WORK DATE: 10/09/2019

### BASIS FOR MONUMENT LOCATION

1973 - PLS 878 LOCATION OF THIS CORNER WAS DETERMINED BY TRAVERSING. INTERSECTION WAS EXCAVATED WITH A BACKHOE. NOTHING WAS FOUND. ROADS ARE DIRT.

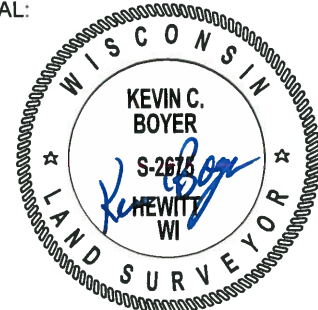
2019 - PLS 2675 FOUND HARRISON MONUMENT 8"± BELOW THE ROAD SURFACE AND 2 WITNESSES. TIE ORIGIN UNKNOWN. THE MONUMENT AGREES WITH BOTH WITNESSES. ACCEPTED THE HARRISON MONUMENT AS THE CORNER LOCATION. SET 2 NEW TIES AND MEASURED TO THE TIES AND EXISTING WITNESSES.



**LOCATION**

(INDICATE CORNER BY "X")

SEAL:



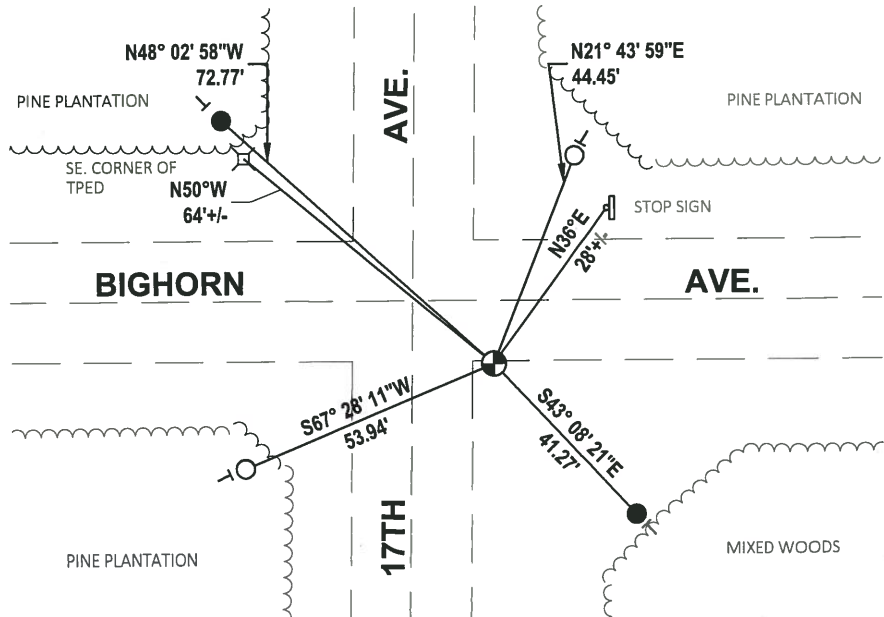
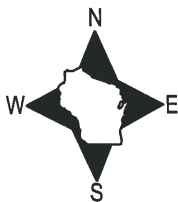
DATA SHOWN HERE ON THIS TIE SHEET IS CORRECT AND COMPLETE TO THE BEST OF MY KNOWLEDGE AND BELIEF.

PROFESSIONAL LAND SURVEYOR

DATE 11/25/19

### - TIE SKETCH -

NOTE: THE CORNER FALLS 16'± EAST OF 17TH AVE. CENTERLINE AND 12'± SOUTH OF BIGHORN AVE. CENTERLINE.



- SET 3/4" x 18" IRON REBAR, 1.50#/FT
- FOUND 3/4" IRON ROD
- ⊕ FOUND HARRISON MONUMENT
- ├ VINYL "T" POST

# ADAMS COUNTY

## Survey Monument Record

CORNER NO. 193  
 SECTION 16  
 TOWN 19  
 RANGE 5

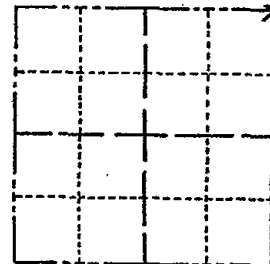
TYPE OF MONUMENT: HARRISON MONUMENT

STATE PLANE COORDINATES: N \_\_\_\_\_  
E \_\_\_\_\_

ELEVATION — M.S.L. DATUM: \_\_\_\_\_

THETA ANGLE: \_\_\_\_\_

FIELD BOOK: 105 PAGE 74



LOCATION  
(Indicated by 'X')

SEAL:



### BASIS FOR MONUMENT LOCATION

(Use reverse side if necessary)

Show info such as: History of corner, with reference to Vol. and pg, dates, surveyor; exact description of monument replaced; if location computed, by taped or EDM traverse; landowner remarks, etc.

Location of this corner was determined by traverseing.

September 8, 1972

Anthony B. Kiedrowski R.L.S. 878

Entire intersection was excavated with a backhoe. Nothing was found. Roads are dirt.

Ok 3-21-84 SS - 2 New 7-17-84

- OK 3-20-79 RN-SS
- OK 2-25-74 W-JG
- OK 1-25-99-JG
- 3-NEW, 1-GONE, 1-6-04-JG
- OK 1-14-09 SS

CERTIFIED CORRECT:

*Anthony B. Kiedrowski*  
Registered Land Surveyor

DATE: 1-30-73

### TIE SKETCH

(Show at least four ties)

