

## PUBLIC LAND SURVEY MONUMENT RECORD

TYPE OF MONUMENT: HARRISON (BROKEN-TOP)  
 ADAMS COUNTY COORDINATES, NAD 83 (1905)

N. 276920.095  
 E. 514920.923

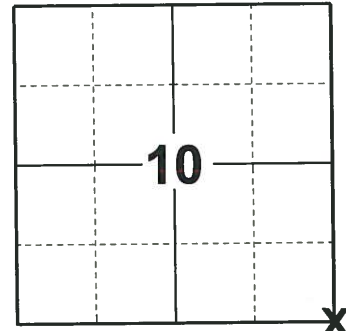
ELEVATION- \_\_\_\_\_ DATUM \_\_\_\_\_

FIELD WORK DATE: 10/09/2019

### BASIS FOR MONUMENT LOCATION

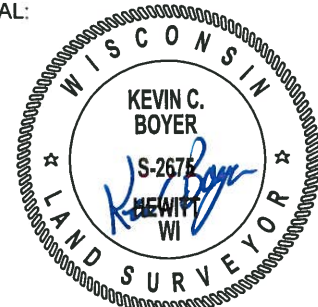
1980 - PLS 1478 INTERSECTION DISTANCE FROM THE NORTH HALF OF THE WEST LINE OF SECTION 10 AND THE DISTANCE OF THE EAST HALF OF THE SOUTH LINE OF SECTION 10 TO DETERMINE THE LOCATION OF THIS CORNER. DISTANCES TO ADJACENT SECTION CORNERS TO THE WEST AND SOUTH "FIT" QUITE WELL. EXCAVATION WITH BACKHOE YIELDED NO EVIDENCE OF PREVIOUS MONUMENTATION.

2019 - PLS 2675 FOUND HARRISON (BROKEN-TOP) MONUMENT 8"± BELOW THE ROAD SURFACE AND 2 WITNESS TREES, THE 2 FOUND WITNESS TREES ARE NOT SHOWN ON THE CURRENT TIE SHEET (UPDATED 1-14-09). ACCEPTED THE HARRISON (BROKEN-TOP) MONUMENT AS THE CORNER LOCATION. SET 4 NEW TIES AND MEASURED TO THE WITNESS TREES.



**LOCATION**  
 (INDICATE CORNER BY "X")

SEAL:



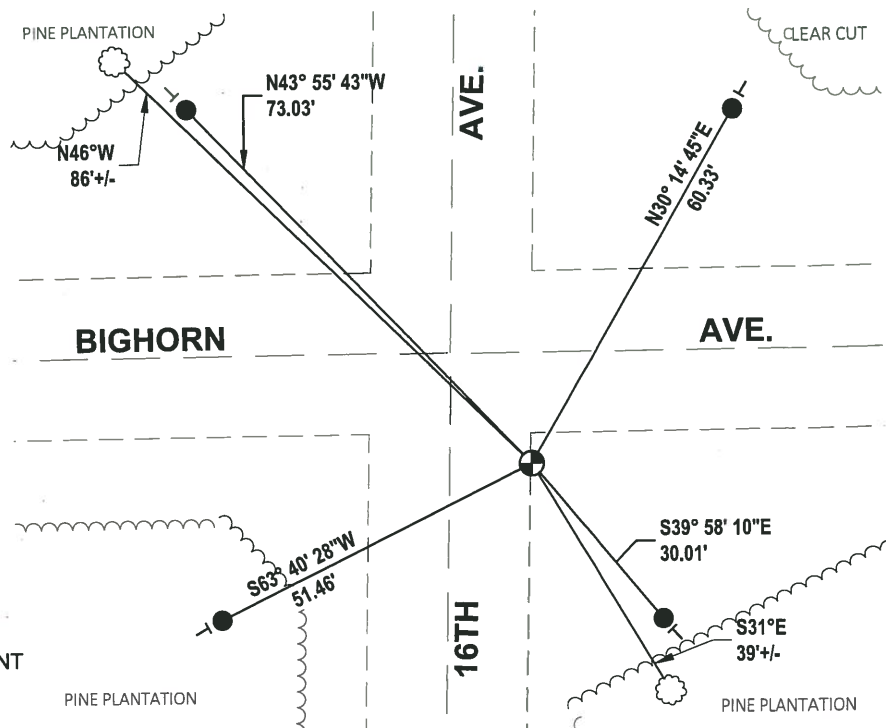
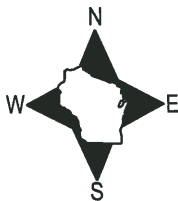
DATA SHOWN HERE ON THIS TIE SHEET IS CORRECT AND COMPLETE TO THE BEST OF MY KNOWLEDGE AND BELIEF.

PROFESSIONAL LAND SURVEYOR

DATE 11/25/19

### TIE SKETCH

NOTE: THE CORNER FALLS 12.1'± EAST OF 16TH AVE. CENTERLINE AND 16.5'± SOUTH OF BIGHORN AVE. CENTERLINE.



- SET 3/4" x 18" IRON REBAR, 1.50#/FT
- ⊕ FOUND HARRISON (BROKEN-TOP) MONUMENT
- ┆ VINYL "T" POST
- ☼ WITNESS TREE

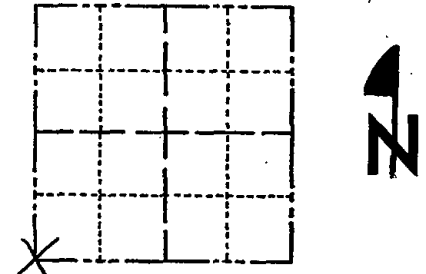
# Government Land Corner Certificate

MAR. SET  
4/21/80  
RN-SS

CORNER NO. 49  
SECTION 11  
TOWN 19  
RANGE 5

ADAMS County  
TYPE OF MONUMENT: Temporay 1"X24" Iron Pipe to be replaced with Harrison in Spring 1980  
STATE PLANE COORDINATES: N \_\_\_\_\_  
E \_\_\_\_\_

ELEVATION — M.S.L. DATUM: \_\_\_\_\_  
THETA ANGLE: \_\_\_\_\_  
FIELD BOOK: 83 PAGE 39  
DRAWN BY: R. NUBER



LOCATION  
(Indicated by 'X')

## BASIS FOR MONUMENT LOCATION

Show info such as: History of corner, with reference to Vol. and pg., dates, surveyor; exact description of monument replaced; if location computed, by taped or EDM traverse; landowner remarks, etc. (Use reverse side if necessary)

Intersected distance from the north half of the west line of Section 10 and the distance of the east half of the south line of Section 10 to determine the location of this corner. Distances to adjacent section corners to the west and south "fit" quite well.

Excavation with backhoe yielded no evidence of previous monumentation.

SEAL:



- Ok 4-17-84 SS-DK
- OK 2-25-99 CR-JG
- OK, 2-12-98-JG
- 3-NEW, TOP BROKEN OFF MON., 1-02-03-JG
- 3 REMAINS 1-14-09 SS

DATA SHOWN HERE ON  
CERTIFIED CORRECT:

*Gregory P Rhinehart*  
Registered Land Surveyor  
DATE: 1/16/80

## TIE SKETCH

Show at least four ties, also fence lines, roads, topo, size and type of witness trees' and if off road - best way to arrive at corner.

