

PUBLIC LAND SURVEY MONUMENT RECORD

TYPE OF MONUMENT: HARRISON (BROKEN-TOP)
 ADAMS COUNTY COORDINATES, NAD 83 (1905)

N. 276930.649

E. 517561.660

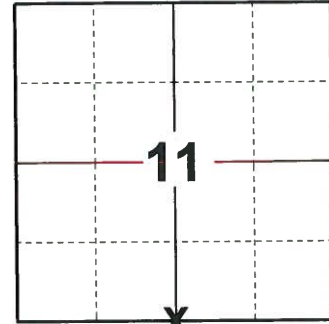
ELEVATION- - - - DATUM - - - -

FIELD WORK DATE: 10/08/2019

BASIS FOR MONUMENT LOCATION

1979 - PLS 878 SCRAPED ENTIRE INTERSECTION. FOUND BOTTOM 4" OF 3" DIA BURNED WOOD POST. REPLACED SAME WITH HARRISON. LOCATION VERIFIED BY EDM TRAVERSE. NO RECORDS OF RESURVEYS.

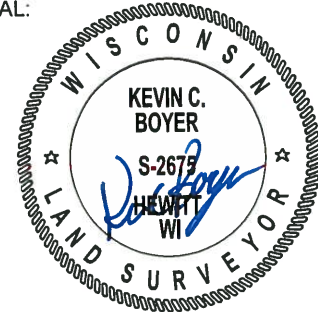
2019 - PLS 2675 FOUND HARRISON (BROKEN-TOP) MONUMENT 8'± BELOW THE ROAD SURFACE. 2 TIES AND 2 WITNESSES. THE MONUMENT AGREES WITH ALL THE TIES AND WITNESSES. ACCEPTED THE HARRISON (BROKEN-TOP) AS THE CORNER LOCATION. SET 2 NEW TIES AND MEASURED TO THE EXISTING TIES AND WITNESSES.



LOCATION

(INDICATE CORNER BY "X")

SEAL:



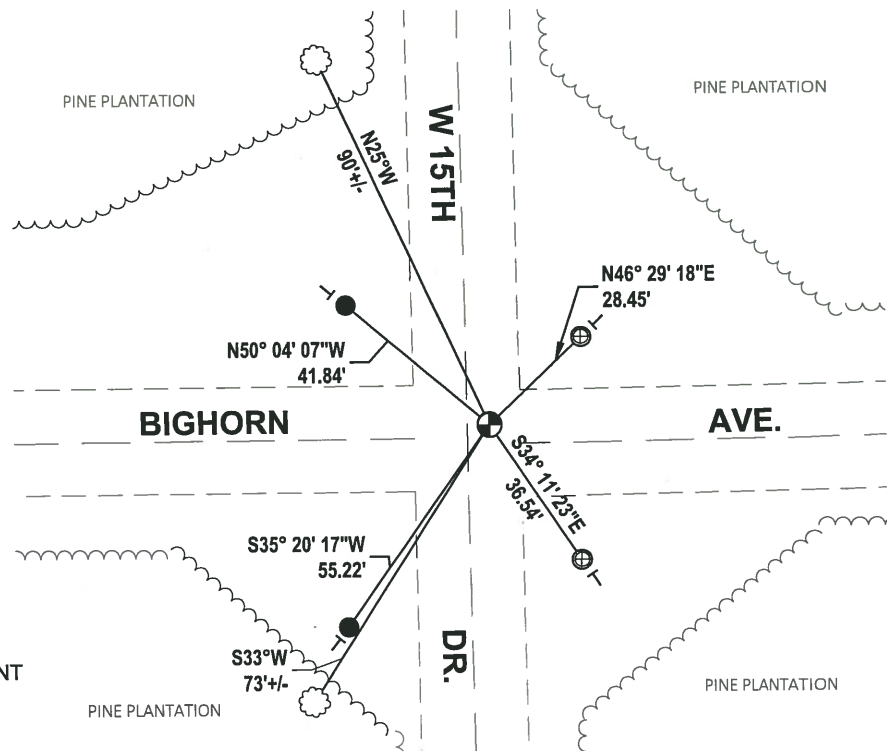
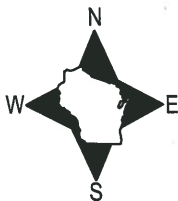
DATA SHOWN HERE ON THIS TIE SHEET IS CORRECT AND COMPLETE TO THE BEST OF MY KNOWLEDGE AND BELIEF.

PROFESSIONAL LAND SURVEYOR

DATE 11/25/19

TIE SKETCH

NOTE: THE CORNER FALLS 4.9'± EAST OF W15TH DR. AND 4.3'± NORTH OF BIGHORN AVE. CENTERLINE.

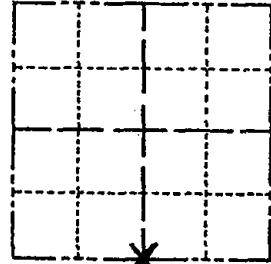


- SET 3/4" x 18" IRON REBAR, 1.50#/FT
- ⊕ FOUND 1.0" O.D. IRON PIPE
- ⊕ FOUND HARRISON (BROKEN-TOP) MONUMENT
- VINYL "T" POST
- ⊙ WITNESS TREE

Government Land Corner Certificate

Adams County
 TYPE OF MONUMENT: Harrison
 STATE PLANE COORDINATES: N _____
 E _____
 ELEVATION — M.S.L. DATUM: _____
 THETA ANGLE: _____
 FIELD BOOK: 74 (102) PAGE 110 (54)
 DRAWN BY: N.J.

CORNER NO. 50
 SECTION 11
 TOWN 19
 RANGE 5



LOCATION
(Indicated by 'X')

BASIS FOR MONUMENT LOCATION

Show info such as: History of corner, with reference to Vol. and pg., dates, surveyor; exact description of monument replaced; if location computed, by taped or EDM traverse; landowner remarks, etc. (Use reverse side if necessary)

Scraped entire intersection of ~~16th Ave and fire lane~~. Found bottom 4" of 3" dia burned wood post. Replaced same with Harrison. Location verified by EDM traverse. No records of resurveys.

SEAL:



DATA SHOWN HERE ON CERTIFIED CORRECT:

Anthony B. Kiedrowski
Registered Land Surveyor

DATE: 10/25/79

Three ties were found destroyed, so new steel posts were installed and a new sketch is located on back of this sheet. 4-17-84 DK-SS

4-NEW TIES, TOP BROKEN OFF MON., 1-02-03-JG
2 NEW TIES - 1 1/4" RODS - 4-7-09 SS

TIE SKETCH

Show at least four ties, also fence lines, roads, topo, size and type of witness trees and if off road - best way to arrive at corner.

