

## PUBLIC LAND SURVEY MONUMENT RECORD

TYPE OF MONUMENT: HARRISON (BROKEN-TOP)

ADAMS COUNTY COORDINATES, NAD 83 (1905)

N. 276958.450

E. 520198.955

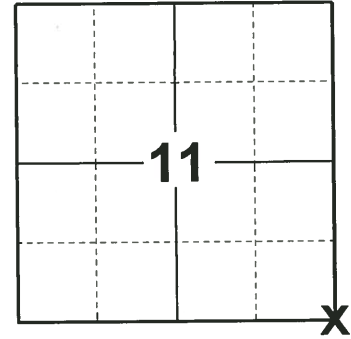
ELEVATION- \_\_\_\_\_ DATUM \_\_\_\_\_

FIELD WORK DATE: 10/08/2019

### BASIS FOR MONUMENT LOCATION

1976 - PLS 878 FOUND SIX INCH CEDAR POST WITH ALUMINUM WISCONSIN CONSERVATION DEPARTMENT PLAQUE INDICATING POST TO BE SECTION CORNER. CHECKED WITH DNR FOR INFORMATION TO SUBSTANTIATE THE LOCATION. NO RECORDS AVAILABLE. TALKED TO WOODLANDS MANAGER FOR NEPCO, BOB PETRY, AND HE SAID TO CONTACT RETIRED DNR MAN BILL BENNETT IN EAU CLAIRE. I LOOKED UP MR. BENNETT, WHO HAD AT ONE TIME BEEN SUPERVISOR FOR A CCC CAMP WHICH IN THE 1930'S DID SOME SURVEY WORK IN NORTHERN ADAMS COUNTY. HE SAID THAT THE SURVEY WORK WAS DONE UNDER THE SUPERVISION OF A LOUS PERKINS, NOW DECEASED. OUR EDM TRAVERSE OF THE SECTION INDICATED THE POST FOUND WAS IN THE PROPER LOCATION FOR THE SECTION CORNER.

2019 - PLS 2675 FOUND HARRISON (BROKEN-TOP) MONUMENT 8"± BELOW THE GROUND SURFACE AND 2 WITNESSES. THE MONUMENT AGREES WITH BOTH WITNESSES. ACCEPTED THE HARRISON (BROKEN-TOP) MONUMENT AS THE CORNER LOCATION. SET 4 NEW TIES AND MEASURED TO THE EXISTING WITNESSES.



**LOCATION**  
(INDICATE CORNER BY "X")

SEAL:



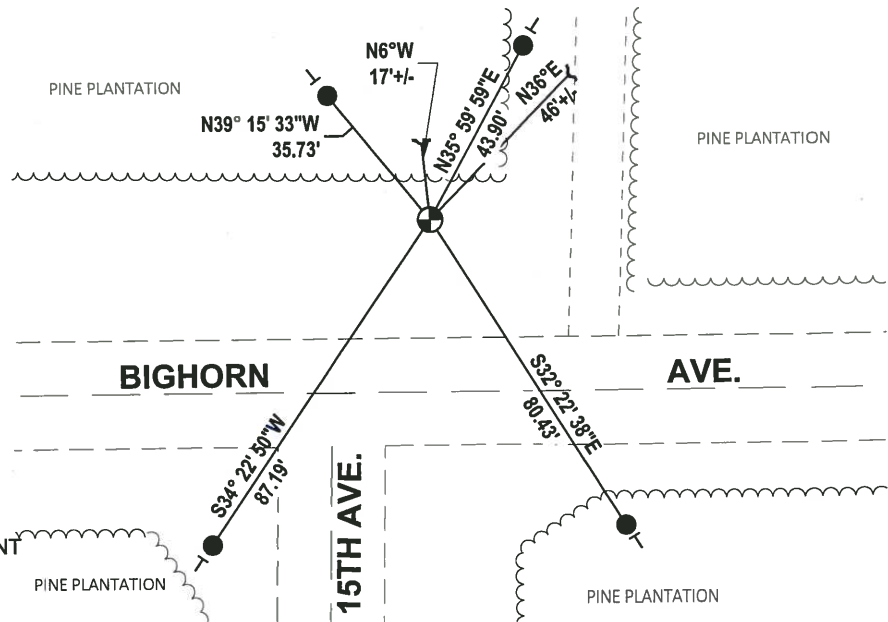
DATA SHOWN HERE ON THIS TIE SHEET IS CORRECT AND COMPLETE TO THE BEST OF MY KNOWLEDGE AND BELIEF.

PROFESSIONAL LAND SURVEYOR

DATE 11/25/19

### - TIE SKETCH

NOTE: THE CORNER FALLS 38.2'± NORTH OF BIGHORN AVE. CENTERLINE.



- SET 3/4" x 18" IRON REBAR, 1.50#/FT
- ⊕ FOUND HARRISON (BROKEN-TOP) MONUMENT
- ┌ STEEL FENCE POST
- └ VINYL "T" POST

ADAMS COUNTY

Survey Monument Record

TYPE OF MONUMENT: Harrison standard

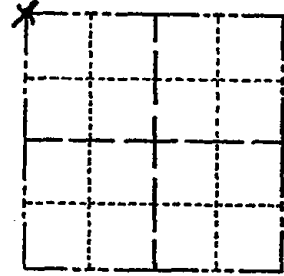
STATE PLANE COORDINATES: N \_\_\_\_\_  
E \_\_\_\_\_

ELEVATION — M.S.L. DATUM: \_\_\_\_\_

THETA ANGLE: \_\_\_\_\_

FIELD BOOK: file PAGE \_\_\_\_\_

CORNER NO. 865 <sup>(51)</sup>  
SECTION 13  
TOWN 19  
RANGE 5



LOCATION  
(Indicated by 'X')

SEAL:

BASIS FOR MONUMENT LOCATION

(Use reverse side if necessary)

Show info such as: History of corner, with reference to Vol. and pg, dates, surveyor; exact description of monument replaced; if location computed, by taped or EDM traverse; landowner remarks, etc.

Found six inch cedar post with aluminum Wisconsin Conservation Department plaque indicating post to be section corner. Checked with DNR for information to substantiate the location. No records available. Talked to woodlands manager for Nepco, Bob Petry, and he said to contact retired DNR man Bill Bennett in Eau Claire. I looked up Mr. Bennett, who had at one time been supervisor for a CCC camp which in the 30's did some survey work in northern Adams County. He said that the survey work was done under the supervision of a Louis Perkins, now deceased. Our EDM traverse of the section indicated the post found was in the proper location for the section corner.



CERTIFIED CORRECT:

Anthony B. Kiedrowski  
Registered Land Surveyor

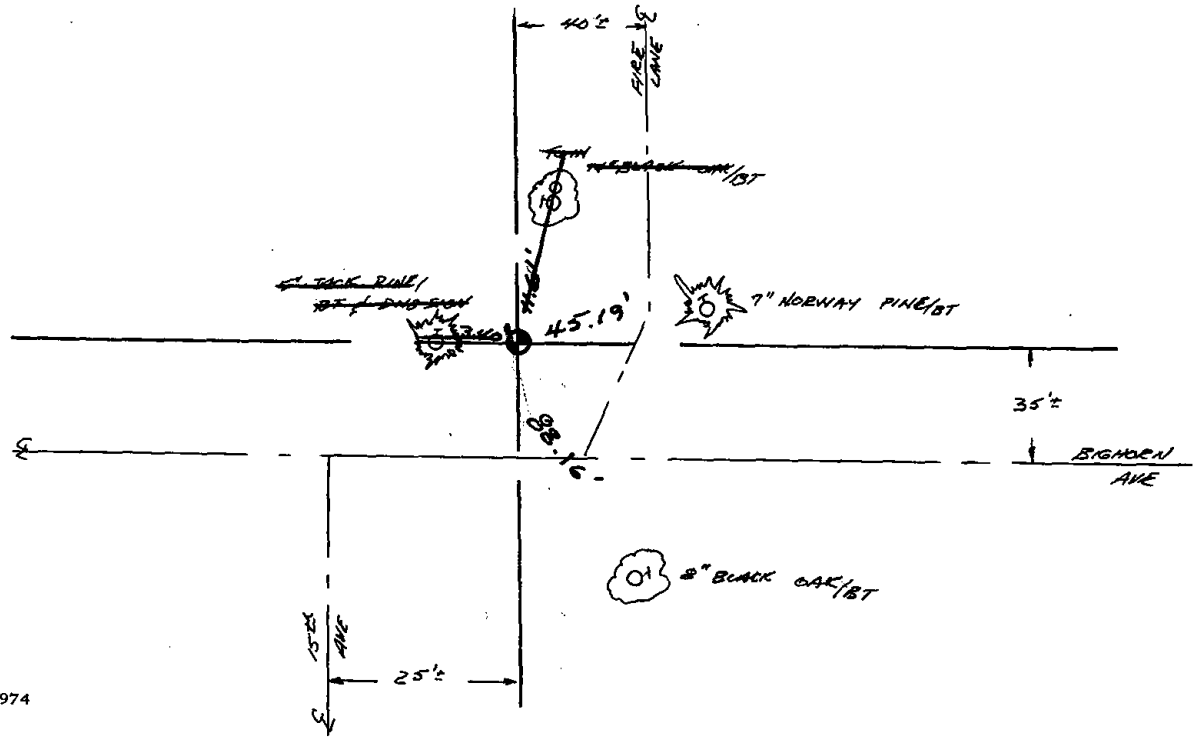
DATE: 1/23/76

See new sketch on reverse side.

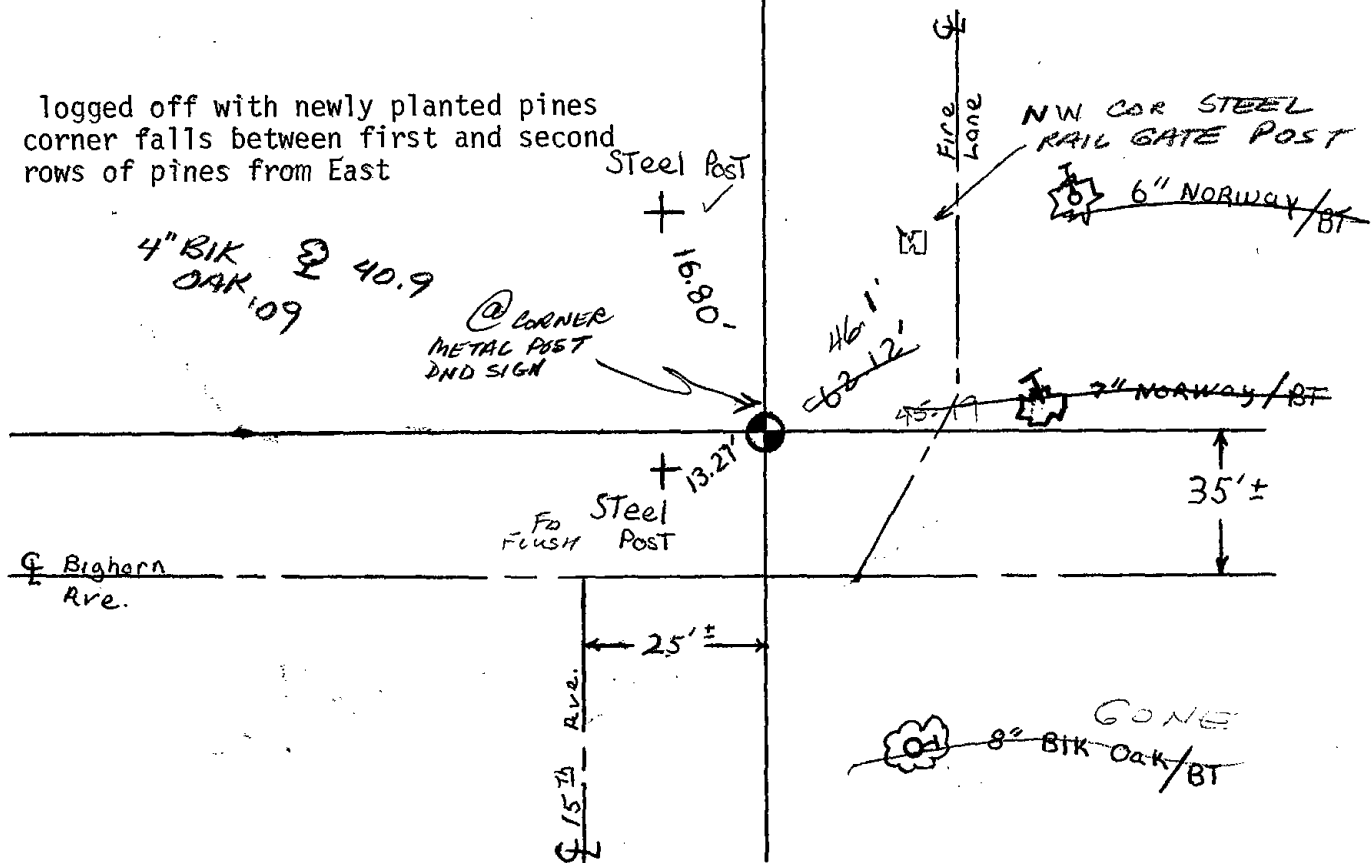
TIE SKETCH

(Show at least four ties)

COR. OK 11-29-78 RN-DA



logged off with newly planted pines  
 corner falls between first and second  
 rows of pines from East



Top of monument is broken off.  
 Steel post ties were set on 4-17-84.

DK-SS

- OK 12-28-88
- DK 1 MARCH 94 CR-JG
- OK 2-12-98 -JG
- OK 12-31-02 -JG
- 2 NEW TIES 4-7-09 SS