

PUBLIC LAND SURVEY MONUMENT RECORD

TYPE OF MONUMENT: HARRISON
 ADAMS COUNTY COORDINATES, NAD 83 (2005)

N. 274304.265

E. 498933.266

ELEVATION- _____ DATUM _____

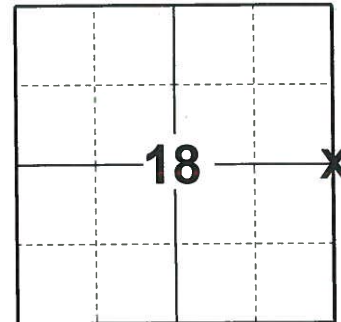
FIELD WORK DATE: 10/17/2019

BASIS FOR MONUMENT LOCATION

1977 - PLS 878 EXCAVATED WITH A BACKHOE AND FOUND A 9" LONG POINTED BIT FROM AN AIR HAMMER ABOVE STONE. HE LOWERED THE STONE AND SET A HARRISON MONUMENT ON TOP.

2010 - PLS 1473 FOUND THE HARRISON MONUMENT BURIED 1.2' UNDER THE SURFACE AND SET A 5" GALVANIZED LANDSCAPE SPIKE OVER THE TOP OF IT.

2019 - PLS 2675 FOUND SPIKE IN THE ROAD SURFACE, REMOVED AND FOUND A HARRISON MONUMENT 12"± BELOW THE ROAD SURFACE AND 3 TIES. THE MONUMENT AGREES WITH ALL 3 TIES. ACCEPTED THE HARRISON MONUMENT AS THE CORNER LOCATION SET 1 NEW TIE AND MEASURED TO THE EXISTING TIES.



LOCATION
 (INDICATE CORNER BY "X")

SEAL:



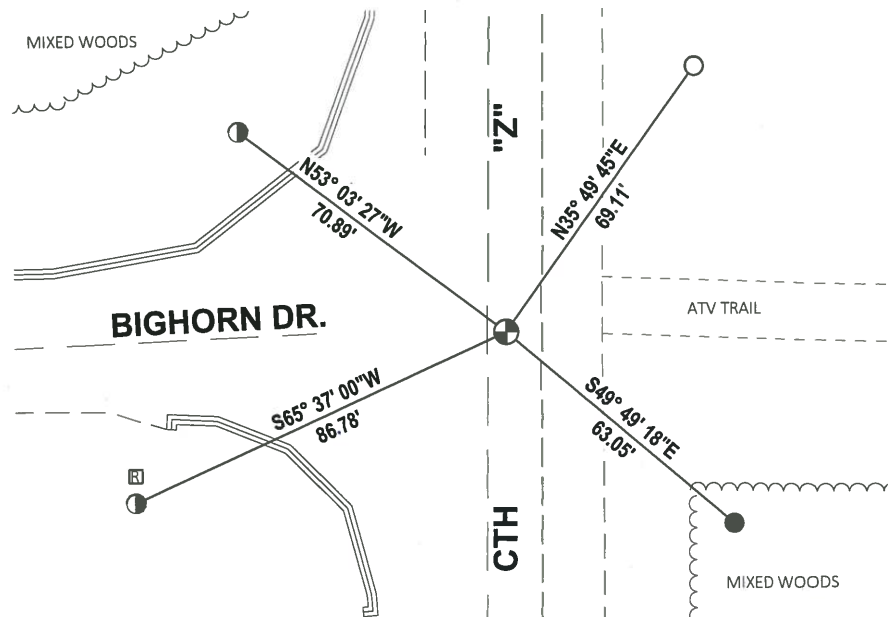
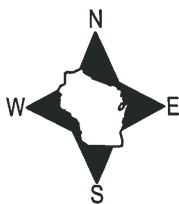
DATA SHOWN HERE ON THIS TIE SHEET IS CORRECT AND COMPLETE TO THE BEST OF MY KNOWLEDGE AND BELIEF.

PROFESSIONAL LAND SURVEYOR

DATE 11/25/19

TIE SKETCH

NOTE: THE CORNER FALLS 4'± EAST OF CTH "Z" CENTERLINE.



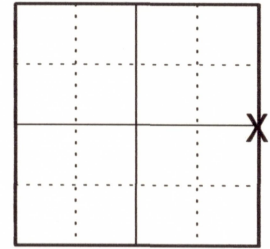
- SET 3/4" x 18" IRON REBAR, 1.50#/FT
- FOUND 3/4" IRON ROD
- FOUND 5/8" IRON ROD
- ⊕ FOUND HARRISON MONUMENT
- ┘ STEEL FENCE POST
- └ VINYL "T" POST
- ▣ RIGHT OF WAY GUARD POST

U.S PUBLIC LAND SURVEY MONUMENT RECORD ADAMS COUNTY, WISCONSIN

CORNER NO. 55
SECTION 18
TOWN 19 N
RANGE 5 E

TYPE OF MONUMENT: 5" GALVANIZED LANDSCAPING SPIKE OVER HARRISON MON.
ADAMS COUNTY COORDINATES:
NORTH: 274304.22'
EAST: 498933.25'

ELEVATION _ MSL DATUM: NOT APPLICABLE
THETA ANGLE: NOT APPLICABLE
FIELD BOOK:
DRAWN BY: DANIEL MARKS



LOCATION

BASIS FOR MONUMENT LOCATION

On May 4, 1977 Anthony B. Kiedrowski excavated with a backhoe and found a 9" long pointed bit from an air hammer above stone. He lowered the stone and set a Harrison monument on top. The Harrison monument was buried 1.2' under the surface so I set a 5" galvanized landscape spike over the top of it.



SEAL

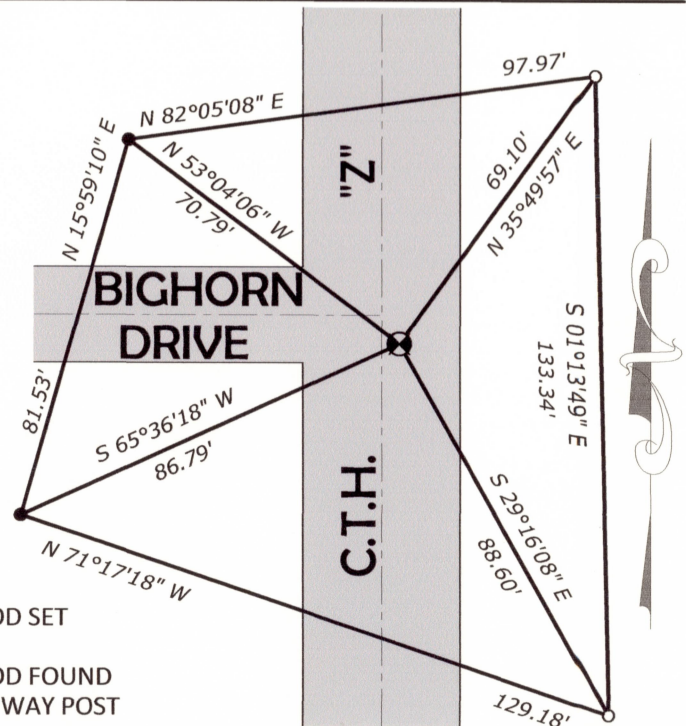


DATA SHOWN HEREON CERTIFIED CORRECT:

Daniel Marks

REGISTERED LAND SURVEYOR
DATE: 7-28-2010

TIE SKETCH: No Scale



MAINTENANCE RECORD

DATE	INIT.	REMARKS

- 3/4" IRON ROD SET
- 5/8" IRON ROD FOUND AT RIGHT OF WAY POST