

## PUBLIC LAND SURVEY MONUMENT RECORD

TYPE OF MONUMENT: HARRISON (BROKEN-TOP)  
 ADAMS COUNTY COORDINATES, NAD 83 (2005)

N. 274299.808

E. 504257.398

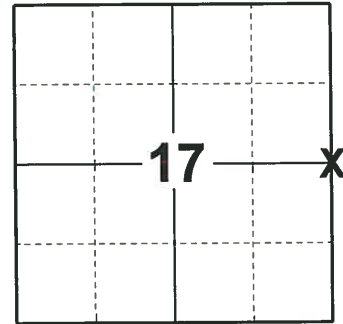
ELEVATION- - - - DATUM - - - -

FIELD WORK DATE: 10/17/2019

### BASIS FOR MONUMENT LOCATION

1972 - PLS 878 DETERMINED BY TRAVERSING, SET BY RETRACEMENT OF A SAM MULLEN SURVEY AND A TRAVERSE AROUND THE ENTIRE SECTION.

2019 - PLS 2675 FOUND HARRISON BROKEN-TOP 12" BELOW THE ROAD SURFACE, 1 TIE, AND 2 WITNESSES. ACCEPTED THE HARRISON BROKEN-TOP AS THE CORNER LOCATION. SET 1 NEW TIE, MEASURED TO 2 FOUND PROPERTY IRONS, AND THE EXISTING TIE AND WITNESSES.



### LOCATION

(INDICATE CORNER BY "X")

SEAL:



DATA SHOWN HERE ON THIS TIE SHEET IS CORRECT AND COMPLETE TO THE BEST OF MY KNOWLEDGE AND BELIEF.

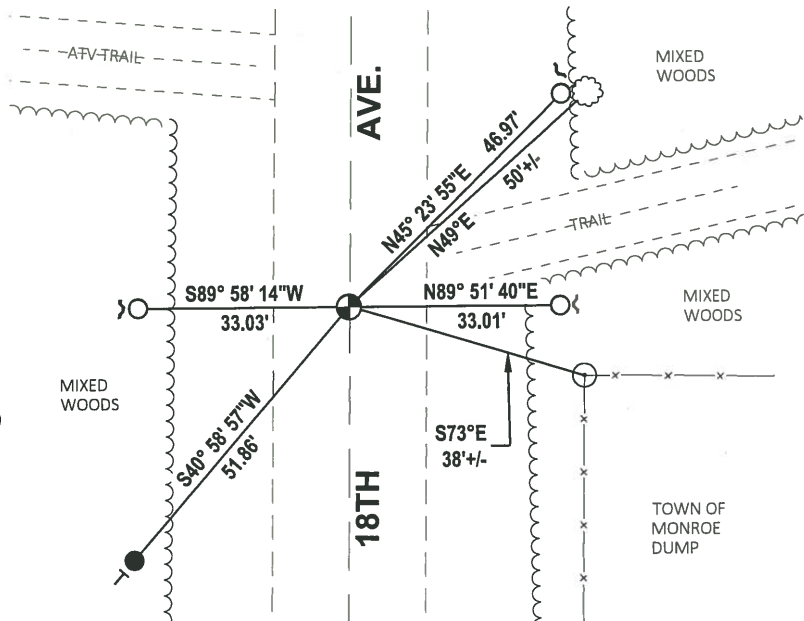
PROFESSIONAL LAND SURVEYOR

DATE 11/25/19

### - TIE SKETCH



- SET 3/4" x 18" IRON REBAR, 1.50#/FT
- FOUND 3/4" IRON ROD
- ⊕ FOUND HARRISON MONUMENT (BROKEN-TOP)
- ⌵ STEEL FENCE POST
- └ VINYL "T" POST
- ☼ WITNESS TREE



ADAMS COUNTY

Survey Monument Record

TYPE OF MONUMENT: HARRISON MONUMENT

STATE PLANE COORDINATES: N \_\_\_\_\_  
E \_\_\_\_\_

ELEVATION — M.S.L. DATUM: \_\_\_\_\_

THETA ANGLE: \_\_\_\_\_

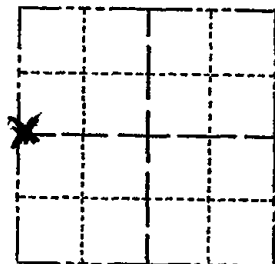
FIELD BOOK: 105 PAGE 53

CORNER NO. 180

SECTION 16

TOWN 19

RANGE 5



LOCATION  
(Indicated by 'X')

SEAL:



BASIS FOR MONUMENT LOCATION

(Use reverse side if necessary)

Show info such as: History of corner, with reference to Vol. and pg, dates, surveyor; exact description of monument replaced; if location computed, by taped or EDM traverse; landowner remarks, etc.

determined by traverseing

August 9, 1972

Anthony B. Kiedrowski R.L.S. 878  
Set by retracement of a Sam Mullen survey and a traverse around the entire section.

OK 4-21-84 DK-SS

- ZNEW TIES 2-25-94 CR-JG
- OK 3-20-79 RW-SS
- OK 7-25-94 MC

CERTIFIED CORRECT:

*Anthony B. Kiedrowski*  
Registered Land Surveyor  
DATE: 8/9/72

TIE SKETCH

OK 1-25-99-JG  
1-GONE, 2-NEW, 1-5-04-JG

(Show at least four ties)

OK 1-26-09 SS-MS "STUMP"

NAIL WASHER  
IN OAK  
14" DIA / 157  
42.80'

5" JACK PINE  
DND SIGN  
NAIL WASHER  
TO OAK  
8" DIA / 157  
LADGE 94

