

## PUBLIC LAND SURVEY MONUMENT RECORD

TYPE OF MONUMENT: HARRISON  
 ADAMS COUNTY COORDINATES, NAD 83 (2005)

N. 274290.129

E. 514865.580

ELEVATION- - - - DATUM - - - -

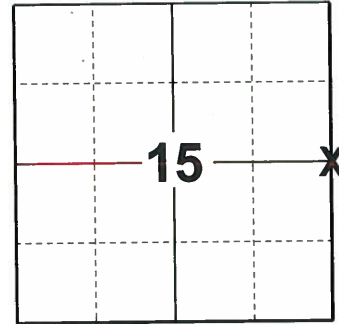
FIELD WORK DATE: 10/14/2019

### BASIS FOR MONUMENT LOCATION

1980 - PLS 1478 SET EQUIDISTANT AND ON LINE BETWEEN ADJACENT SECTION CORNERS. NO EVIDENCE OF ANY PREVIOUS MONUMENTATION WAS FOUND.

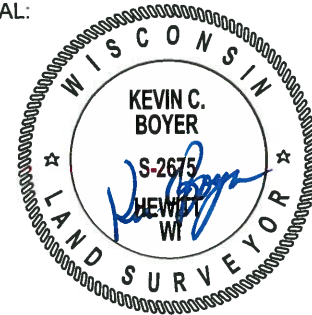
1984 - PLS 1478 UPDATED TIE SHEET

2019 - PLS 2675 FOUND HARRISON 4" BELOW THE ROAD SURFACE, 2 TIES, AND 1 WITNESS THAT HAVE UNKNOWN ORIGIN ON CURRENT TIE SHEET (UPDATED 1-14-09). THE MONUMENT IS ONLINE AND EQUIDISTANT BETWEEN ADJACENT CORNERS. ACCEPTED THE HARRISON AS THE CORNER LOCATION. SET 2 NEW TIES AND MEASURED TO THE FOUND WITNESSES AND TIES.



LOCATION  
 (INDICATE CORNER BY "X")

SEAL:



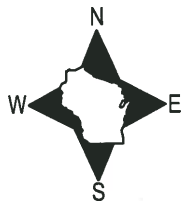
DATA SHOWN HERE ON THIS TIE SHEET IS CORRECT AND COMPLETE TO THE BEST OF MY KNOWLEDGE AND BELIEF.

PROFESSIONAL LAND SURVEYOR

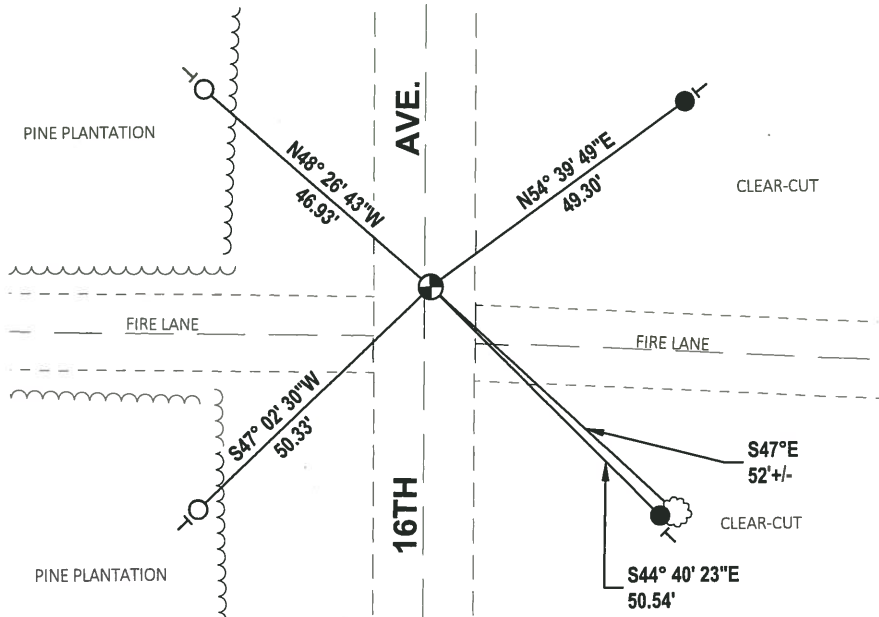
DATE 11/25/19

### - TIE SKETCH

NOTE: THE CORNER LANDS 1.0'+/- EAST OF CENTERLINE OF 16TH AVE.



- SET 3/4" x 18" IRON REBAR, 1.50#/FT
- FOUND 3/4" IRON ROD
- ⊕ FOUND HARRISON MONUMENT
- └ VINYL "T" POST
- ☼ WITNESS TREE

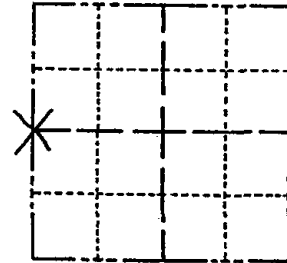


SET 149R 4/21/80  
RN-SS

# Government Land Corner Certificate

ADAMS County  
TYPE OF MONUMENT: Temporary 1" X 24" Iron Pipe to be replaced with Harrison in Spring 1980  
STATE PLANE COORDINATES: N \_\_\_\_\_  
E \_\_\_\_\_  
ELEVATION — M.S.L. DATUM: \_\_\_\_\_  
THETA ANGLE: \_\_\_\_\_  
FIELD BOOK: 83 PAGE 40  
DRAWN BY: R. NUBER

CORNER NO. 58  
SECTION 14  
TOWN 19  
RANGE 5



LOCATION  
(Indicated by 'X')

## BASIS FOR MONUMENT LOCATION

Show info such as: History of corner, with reference to Vol. and pg., dates, surveyor; exact description of monument replaced; if location computed, by taped or EDM traverse; landowner remarks, etc. (Use reverse side if necessary)

Set equidistant and on line between adjacent section corners. No evidence of any previous monumentation was found.

SEAL:



DATA SHOWN HERE ON  
CERTIFIED CORRECT:

Gregory P Rhinehart  
Registered Land Surveyor

DATE: 1/16/80

See the reverse side for the updated map 4-17-84

## TIE SKETCH

Show at least four ties, also fence lines, roads, topo, size and type of witness trees and if off road - best way to arrive at corner.

