

PUBLIC LAND SURVEY MONUMENT RECORD

TYPE OF MONUMENT: HARRISON
 ADAMS COUNTY COORDINATES, NAD 83 (2005)

N. 274316.128

E. 520180.137

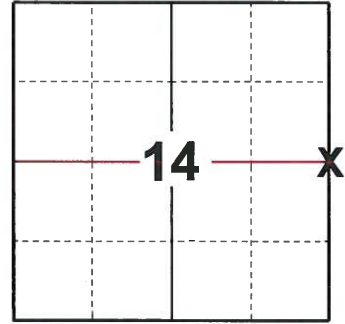
ELEVATION- _____ DATUM _____

FIELD WORK DATE: 10/14/2019

BASIS FOR MONUMENT LOCATION

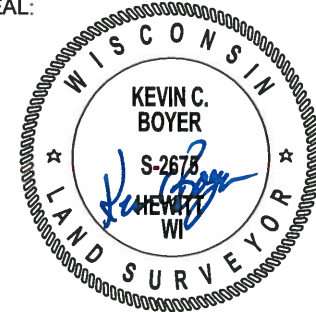
1975 - PLS 1103 RAN EDM/TRANSIT TRAVERSE AROUND SECTION 13 TO DETERMINE SEARCH AREA FOR INVESTIGATION. EXCAVATION WITH BACKHOE BY A.B. KIEDROWSKI, COUNTY SURVEYOR, YIELD NO EVIDENCE OF THE CORNER OR ANY SUBSEQUENT REMONUMENTATION. SET CORNER EQUIDISTANT AND ON LINE BETWEEN ADJACENT SECTION CORNERS.

2019 - PLS 2675 FOUND HARRISON 6" BELOW THE GROUND, 2 TIES, AND 3 WITNESSES. THE MONUMENT AGREES WITH ALL THE TIES AND WITNESSES. ACCEPTED THE HARRISON AS THE CORNER LOCATION. SET 3 NEW TIES AND MEASURED TO THE EXITING TIES AND WITNESSES.



LOCATION
 (INDICATE CORNER BY "X")

SEAL:



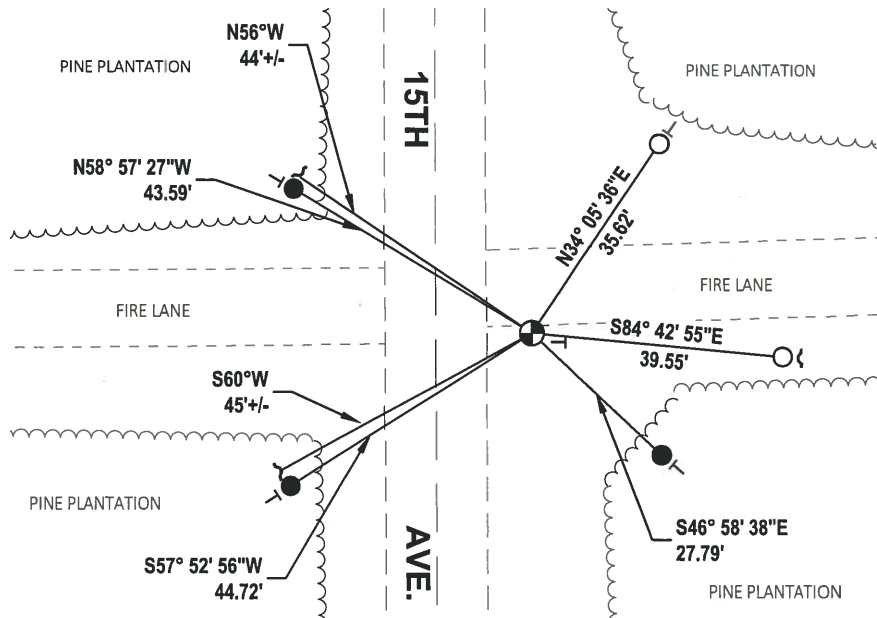
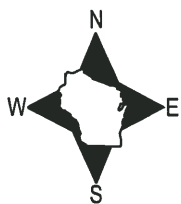
DATA SHOWN HERE ON THIS TIE SHEET IS CORRECT AND COMPLETE TO THE BEST OF MY KNOWLEDGE AND BELIEF.

PROFESSIONAL LAND SURVEYOR

DATE 11/25/19

TIE SKETCH

NOTE: THE CORNER LANDS 15'+/- EAST OF 15TH AVE. AND 1'+/- SOUTH OF FIRE LANE.



- SET 3/4" x 18" IRON REBAR, 1.50#/FT
- FOUND 3/4" IRON ROD
- ⊙ FOUND 1-1/4" O.D. IRON PIPE
- ⊕ FOUND HARRISON MONUMENT
- ↙ STEEL FENCE POST
- └ VINYL "T" POST

ADAMS COUNTY

Survey Monument Record

TYPE OF MONUMENT: Standard Harrison

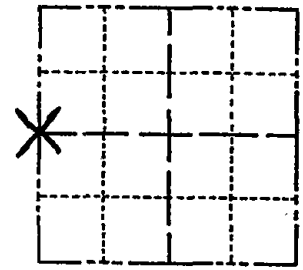
STATE PLANE COORDINATES: N _____
E _____

ELEVATION — M.S.L. DATUM: _____

THETA ANGLE: _____

FIELD BOOK: _____ PAGE _____

CORNER NO. 946 ⁽⁵⁹⁾
SECTION 13
TOWN 19
RANGE 5



LOCATION
(Indicated by 'X')

SEAL:



BASIS FOR MONUMENT LOCATION

(Use reverse side if necessary)

Show info such as: History of corner, with reference to Vol. and pg, dates, surveyor; exact description of monument replaced; if location computed, by taped or EDM traverse; landowner remarks, etc.

Ran EDM/transit traverse around Section 13 to determine search area for investigation.

Excavation with backhoe by A. B. Kiedrowski, County Surveyor, yielded no evidence of the corner or any subsequent remonumentation.

Set corner equidistant and on line between adjacent section corners.

Cor. OK 11-29-78 RN-DA

see the reverse side for the updated map 4-17-84

CERTIFIED CORRECT:

Dale C. Hagen

Registered Land Surveyor

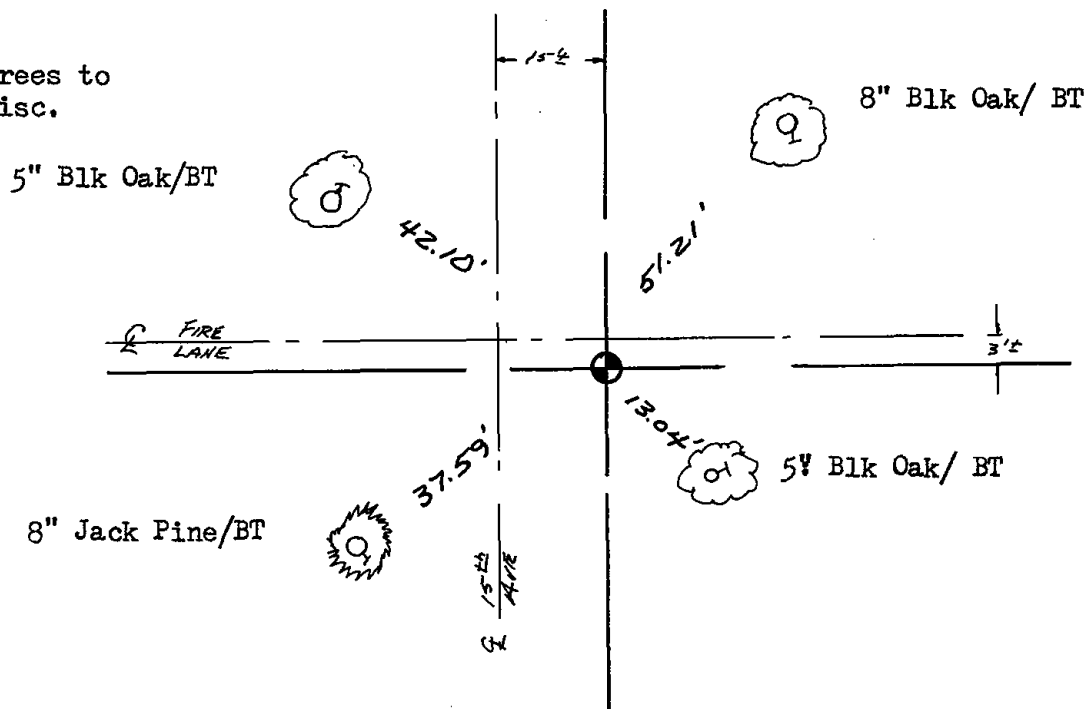
DATE: December 2, 1975

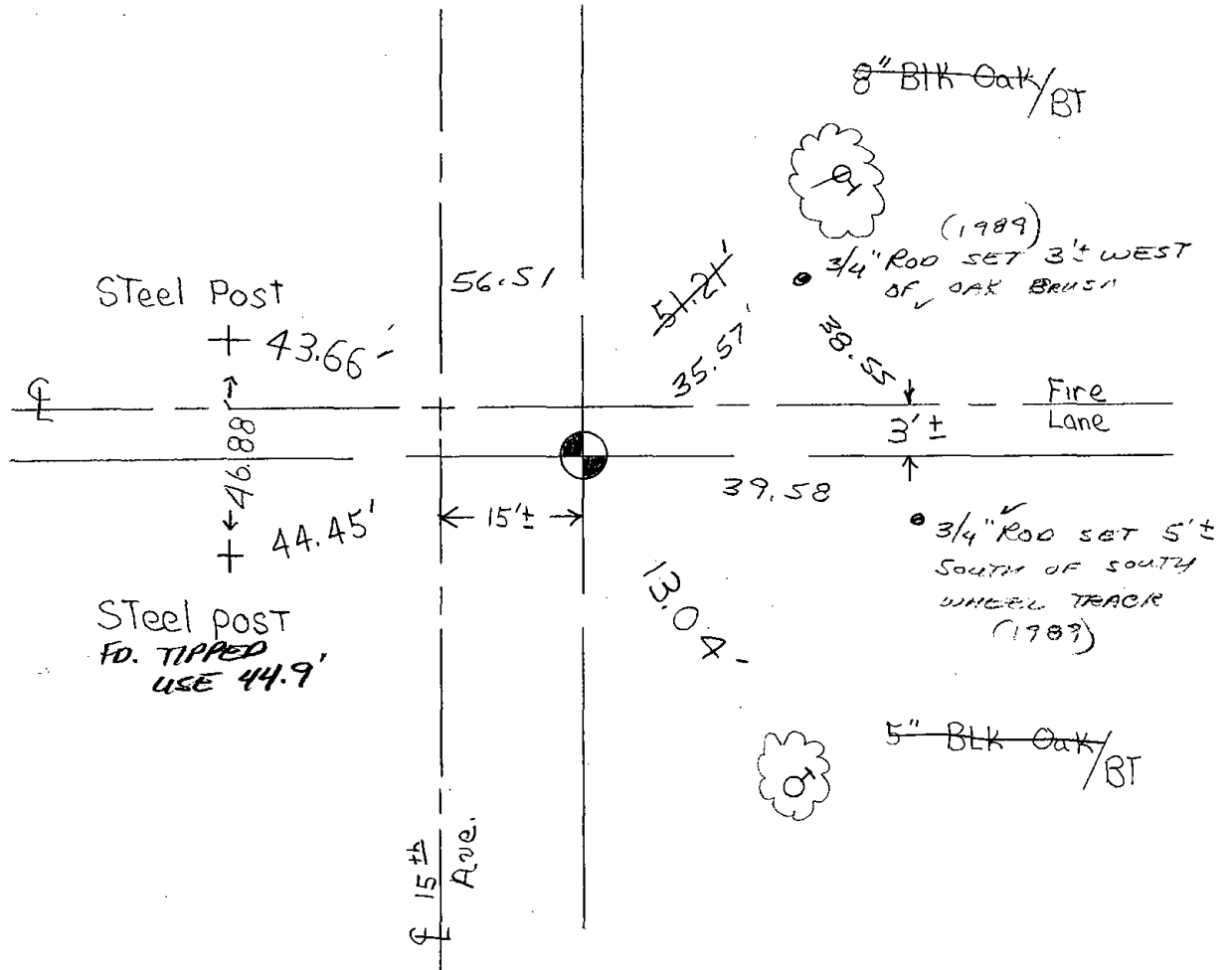
TIE SKETCH

(Show at least four ties)

NOTE:

Ties in trees to nail in disc.





2 new ties were set on 4-17-84 SS-DK

2 NEW TIES 7-7-89 MK-SS
OK 1 MARCH 94 CR-JG

OK, 2-12-98-JG

OK, 12-31-02-JG

OK-4-7-09 SS